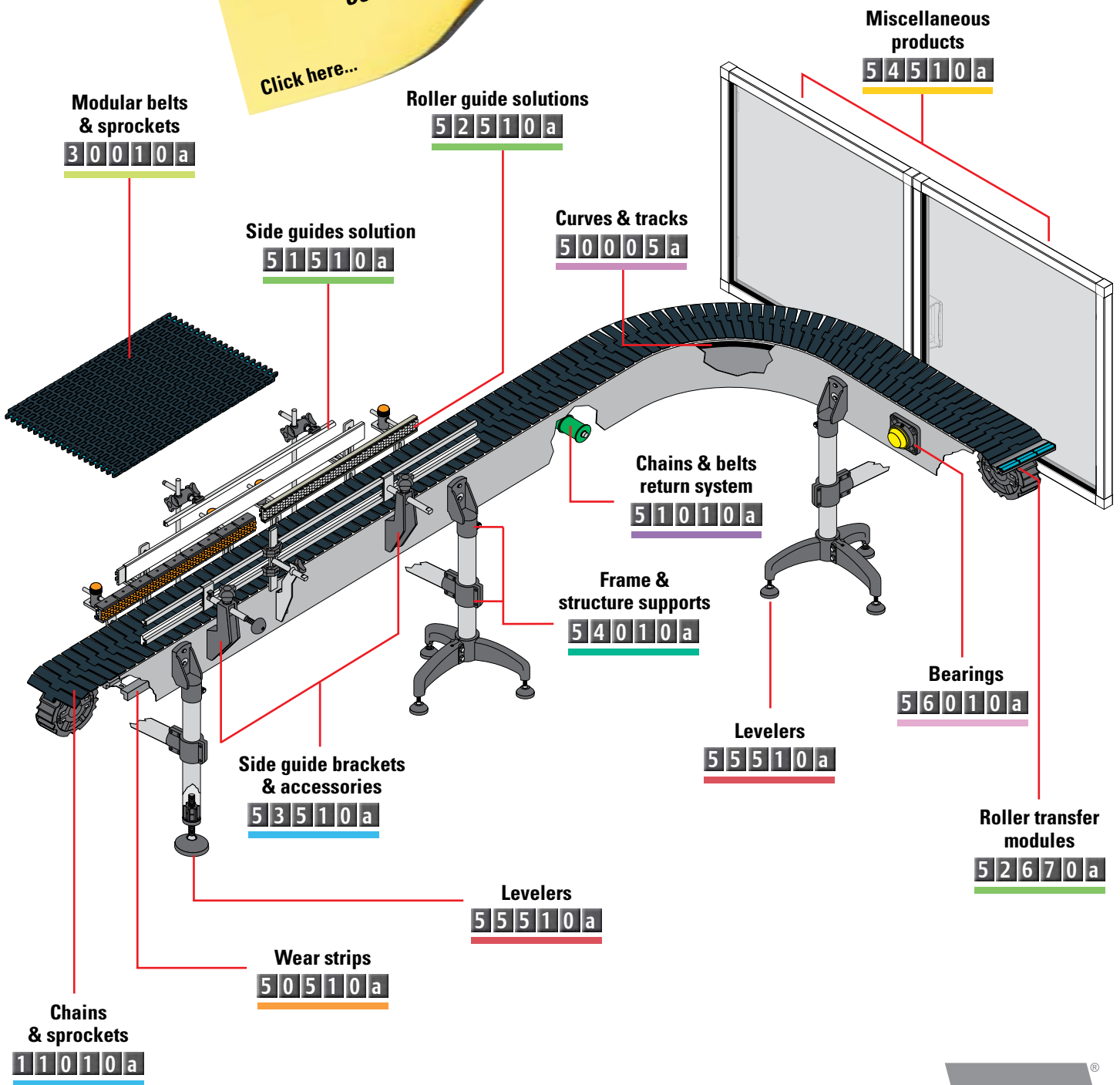


| | | | |
|---------------------------|-----------------------------|-----------------------------------|---------------------|
| Chains & sprockets | Wear strips | Side guide brackets & accessories | Levelers |
| Modular belts & sprockets | Chain & belt return systems | Frame & structure supports | Bearing supports |
| Curves & tracks | Side guide solutions | Miscellaneous products | Related information |

1 0 1 1 0 a

GENERAL INDEX

www.SystemPlastSmartGuide.com



| | | | |
|---------------------------|-----------------------------|-----------------------------------|---------------------|
| Chains & sprockets | Wear strips | Side guide brackets & accessories | Levelers |
| Modular belts & sprockets | Chain & belt return systems | Frame & structure supports | Bearing supports |
| Curves & tracks | Side guide solutions | Miscellaneous products | Related information |

INTRODUCTION

| | |
|--------------------------------|---------------|
| Smart Guide visual index..... | 10110a |
| Smart Guide catalog index..... | 10110b |
| How Smart Guide works..... | 10110c |
| Smart Guide icon legend..... | 10110d |

CHAINS & SPROCKETS

| | |
|---|---------------|
| Index metal chains & sprockets..... | 11010a |
| Index straight thermoplastic chains & sprockets..... | 11011a |
| Index sideflexing thermoplastic chains & sprockets..... | 11012a |
| Index other types sideflexing chains & sprockets..... | 11013a |

MODULAR BELTS & SPROCKETS

| | |
|--|---------------|
| Index straight modular belts & sprockets..... | 30010a |
| Index sideflexing modular belts & sprockets..... | 30012a |
| Index ½" pitch (12,7mm) - Thickness: 8,7mm..... | 30020a |
| Index ¾" pitch (19mm) - Thickness: 8,7mm..... | 30190a |
| Index 1" pitch (25,4mm) - Thickness: 8,7mm..... | 30300a |
| Index 1" pitch (25,4mm) - Thickness: 12,7mm..... | 30410a |
| Index 1" pitch (25,4mm)..... | 30700a |
| Index sideflexing modular belts 2256..... | 30728a |

CURVES & TRACKS

| | |
|-----------------------------|---------------|
| Introduction to curves..... | 50005a |
| Index magnetic curves..... | 50010a |

WEAR STRIPS

| | |
|------------------------|---------------|
| Index wear strips..... | 50510a |
|------------------------|---------------|

CHAIN & BELT RETURN SYSTEMS

| | |
|--|---------------|
| Index chain & belt return systems..... | 51010a |
|--|---------------|

SIDE GUIDE SOLUTIONS

| | |
|--|---------------|
| Index side guides & clamps..... | 51510a |
| Index roller side guides & roller transfer plates..... | 52510a |

SIDE GUIDE BRACKETS & ACCESSORIES

| | |
|---------------------------------|---------------|
| Index side guides brackets..... | 53510a |
|---------------------------------|---------------|

FRAME & STRUCTURE SUPPORTS

| | |
|---------------------------------------|---------------|
| Index frame & structure supports..... | 54010a |
|---------------------------------------|---------------|

MISCELLANEOUS PRODUCTS

| | |
|-----------------------------------|---------------|
| Index miscellaneous products..... | 54510a |
|-----------------------------------|---------------|

LEVELERS

| | |
|---------------------------------|---------------|
| Index levelers & tube ends..... | 55510a |
|---------------------------------|---------------|

BEARINGS

| | |
|-----------------------------|---------------|
| Index mounted bearings..... | 56010a |
|-----------------------------|---------------|

RELATED INFORMATION

| | |
|--------------------------------|---------------|
| Index related information..... | 70050a |
|--------------------------------|---------------|

ITEM DESCRIPTION INDEX

| | |
|-----------------------------|---------------|
| Item description index..... | 78000a |
|-----------------------------|---------------|

STANDARD TERMS AND CONDITIONS OF SALE

| | |
|--|---------------|
| Standard terms and conditions of sale..... | 79900a |
|--|---------------|



| | | | |
|---------------------------|-----------------------------|-----------------------------------|---------------------|
| Chains & sprockets | Wear strips | Side guide brackets & accessories | Levelers |
| Modular belts & sprockets | Chain & belt return systems | Frame & structure supports | Bearing supports |
| Curves & tracks | Side guide solutions | Miscellaneous products | Related information |

1 0 1 1 0 c

HOW SMART GUIDE® CATALOG WORKS

www.SystemPlastSmartGuide.com

The page codes of this catalog opens your access to all relevant information and services about the product you have selected on www.SystemPlastSmartGuide.com



Click here for related information.

- Related information:
- Design guidelines
 - General information
 - Construction details
 - Calculations

Clicking on product code directly available:

- Download DWG and STP files
- Possibility to create your bill of material for enquiry or purchase



SPEC®
Load and strength calculator



Our interactive catalog is your key to direct access to the System Plast® SmartGuide® website, where you will find all possible information and tools to assist you in selecting, applying our products

| | | | |
|---------------------------|-----------------------------|-----------------------------------|---------------------|
| Chains & sprockets | Wear strips | Side guide brackets & accessories | Levelers |
| Modular belts & sprockets | Chain & belt return systems | Frame & structure supports | Bearing supports |
| Curves & tracks | Side guide solutions | Miscellaneous products | Related information |

1 0 1 1 0 d

LEGEND ICONS

www.SystemPlastSmartGuide.com

| ICON | LEGEND |
|------|--|
| | Link to open menu for technical information related to the products listed on this page. <small>Click here for related information.</small> |
| | Link to find related products. |
| | Link to find related products. Note: only available on our website www.SystemPlastSmartGuide.com |
| | Codes in orange background are indicators for modular belts in molded to width versions. |
| | Information only available on our website: www.SystemPlastSmartGuide.com |
| | Link to other varieties of these chains and/or link to the chains used with the sprockets listed on this page. |
| | Link to other varieties of these modular belts and/or link to the belts used with the sprockets listed on this page. |
| | Link to the sprockets used with the chains or belts listed on this page. |
| | Minimum order quantity. |
| | Indicates chains, belts or curves suitable for magnetic curve systems. |
| | This product includes patented features. |
| | Link to general information about the products listed on this page. |
| | This product is not suitable in use with chains with hold-down tabs. |

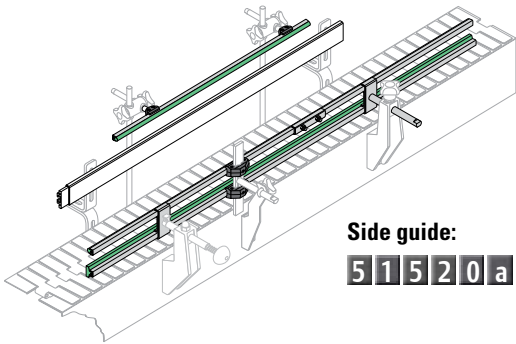
| ICON | LEGEND |
|------|---|
| | Weight in Kg/m |
| | Length per standard code. |
| | Length per standard coil. |
| | Quantity standard packaging. |
| | Indication for products that contain a dry lubricant. |
| | Material: stainless steel AISI 430. |
| | Material: stainless steel AISI 304. |
| | Material: aluminum, anodized. |
| | Material: aluminum. |
| | Material: zinc plated steel. |
| | Nominal diameter 41mm. |
| | Product suitable for assembly to a rectangular profile. |
| | Max load capacity. |
| | Wrench size. |

| | | | |
|---------------------------|-----------------------------|-----------------------------------|---------------------|
| Chains & sprockets | Wear strips | Side guide brackets & accessories | Levelers |
| Modular belts & sprockets | Chain & belt return systems | Frame & structure supports | Bearing supports |
| Curves & tracks | Side guide solutions | Miscellaneous products | Related information |

5 1 5 1 0 a

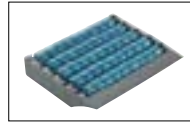
INDEX SIDE GUIDES & CLAMPS

www.SystemPlastSmartGuide.com



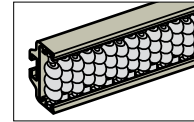
Side guide:
5 1 5 2 0 a

ROLLER TRANSFER PLATES



Go to:
5 2 6 7 0 a

FOR INDEX SIDE GUIDES WITH ROLLERS.



Go to:
5 2 5 1 0 a



Information about this product is only available on our Smart Guide® website.

| SHAPE SIDE GUIDE | TYPE OF CLAMPS | | GUIDE FOR PET BOTTLES |
|---------------------------|----------------|--|---|
| <p>5 1 5 2 0 a</p> | | Single clamps 5 1 6 0 0 a | <p>5 1 7 2 0 a 5 1 7 3 0 a 5 1 7 3 0 a</p> |
| | | Double clamps 5 1 6 1 0 a | |
| | | Stainless steel clamps 5 1 6 2 0 a | |
| | | Other clamps 5 1 6 3 0 a | |
| | | Single clamps 5 1 6 4 0 a | <p>PRODUCT GUIDES</p> <p>5 1 7 1 0 a</p> |
| | | Double clamps 5 1 6 5 0 a | |

| D-SHAPE | HOLLOW EXTRUDED PROFILES | | |
|---------------------------|---------------------------|---------------------------|---------------------------|
| <p>5 1 6 6 0 a</p> | <p>5 1 6 8 0 a</p> | <p>5 1 6 9 0 a</p> | <p>5 1 7 0 0 a</p> |

Accessories for guide adjustment in curves:

| ADJUSTING RODS | ADJUSTING IN CURVES | THERMOPLASTIC ADJUSTING | ALUMINIUM GUIDE RAIL |
|---------------------------|---------------------------|---------------------------|---------------------------|
| <p>5 1 8 3 0 a</p> | <p>5 1 8 1 0 a</p> | <p>5 1 8 2 0 a</p> | <p>5 1 7 4 0 a</p> |

| | | | |
|---------------------------|-----------------------------|-----------------------------------|---------------------|
| Chains & sprockets | Wear strips | Side guide brackets & accessories | Levelers |
| Modular belts & sprockets | Chain & belt return systems | Frame & structure supports | Bearing supports |
| Curves & tracks | Side guide solutions | Miscellaneous products | Related information |

51520a

VALU GUIDE® RAIL

www.SystemPlastSmartGuide.com



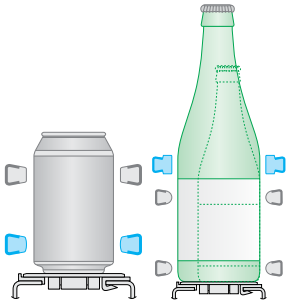
VALU GUIDE®

Click here for related information.

continue

For clamps, go to:

51510a



| METAL PROFILE MATERIAL | UHMWPE WHITE | UHMWPE BLACK | NOLU®-S | UHMWPE ANTISTATIC BLACK | HIGH TEMPERATURE RESISTANT | | | |
|------------------------|------------------|----------------|--------------|-------------------------|----------------------------|--------------|------|-----|
| | ITEM DESCRIPTION | | | | | | | |
| | | VG-LSSR-10 | VG-LSSR-B-10 | VG-LSSR-NS-10 | VG-LSSR-SD-10 | - | 30 m | 3 m |
| | | VG-LSSR-20 | VG-LSSR-B-20 | VG-LSSR-NS-20 | VG-LSSR-SD-20 | | 30 m | 6 m |
| | | VG-LGSR-10 | VG-LGSR-B-10 | - | - | - | 30 m | 3 m |
| | | VG-LGSR-20 | VG-LGSR-B-20 | | | | 30 m | 6 m |
| | | VG-LSSRS-10 | - | - | - | 30 m | 3 m | |
| | | VG-LSSRS-20 | | | | 30 m | 6 m | |
| | | VG-LSSM-10 | VG-LSSM-B-10 | VG-LSSM-NS-10 | VG-LSSM-SD-10 | - | 30 m | 3 m |
| | | VG-LSSM-20 | VG-LSSM-B-20 | VG-LSSM-NS-20 | VG-LSSM-SD-20 | | 30 m | 6 m |
| | | VG-LSSMS-10 | - | - | - | - | 30 m | 3 m |
| | | VG-LSSMS-20 | - | - | - | | 30 m | 6 m |
| | | VG-LSSF-10 | - | - | - | VG-SSF-HT-10 | 30 m | 3 m |
| | | VG-LSSF-20 | | | | | 30 m | 6 m |
| | | VG-LGSF-10 | - | - | - | - | 30 m | 3 m |
| | | VG-LGSF-20 | - | - | - | - | 30 m | 6 m |
| | | VG-LSST-.75-10 | - | - | - | - | 30 m | 3 m |
| | | VG-LSST-.75-20 | - | - | - | | 30 m | 6 m |
| | | VG-LSSWF-10 | - | - | - | - | 30 m | 3 m |
| | | VG-LSSWF-20 | - | - | - | | 30 m | 6 m |

Min. order quantity: 180 m

continue

| | | | |
|---------------------------|-----------------------------|-----------------------------------|---------------------|
| Chains & sprockets | Wear strips | Side guide brackets & accessories | Levelers |
| Modular belts & sprockets | Chain & belt return systems | Frame & structure supports | Bearing supports |
| Curves & tracks | Side guide solutions | Miscellaneous products | Related information |

5 1 5 2 0 b

VALU GUIDE® RAIL

www.SystemPlastSmartGuide.com



For clamps, go to:

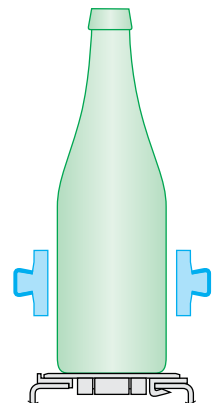
5 1 5 1 0 a



Click here for related information.

◀ back continue ▶

| METAL PROFILE MATERIAL | UHMWPE WHITE | Nolu®-S | UHMWPE ANTISTATIC BLACK | | |
|------------------------|------------------|------------------------------------|-------------------------|--------------------|------------|
| | ITEM DESCRIPTION | | | | |
| | SS 304 | VG-LSST-1.00-10 | - | - | 30 m / 3 m |
| | SS 304 | VG-LSST-1.00-20 | - | - | 30 m / 6 m |
| | SS 304 | VG-LSSWF-1.25-10 | - | - | 30 m / 3 m |
| | SS 304 | VG-LSSWF-1.25-20 | - | - | 30 m / 6 m |
| | SS 304 | VG-LSST-1.25-10 | VG-LSST-1.25-NS-10 | VG-LSST-1.25-SD-10 | 30 m / 3 m |
| | SS 304 | VG-LSST-1.25-20 | VG-LSST-1.25-NS-20 | VG-LSST-1.25-SD-20 | 30 m / 6 m |
| | Zn | VG-LGST-1.25-10 <small>MOQ</small> | - | - | 30 m / 3 m |
| | Zn | VG-LGST-1.25-20 <small>MOQ</small> | - | - | 30 m / 6 m |
| | SS 304 | VG-SSTS-1.25-10 | - | - | 30 m / 3 m |
| | SS 304 | VG-SSTS-1.25-20 | - | - | 30 m / 6 m |
| | SS 304 | VG-LSST-1.60-10 | VG-LSST-1.60-NS-10 | VG-LSST-1.60-SD-10 | 30 m / 3 m |
| | SS 304 | VG-LSST-1.60-20 | VG-LSST-1.60-NS-20 | VG-LSST-1.60-SD-20 | 30 m / 6 m |



MOQ Min. order quantity: 180 m

◀ back continue ▶

| | | | |
|---------------------------|-----------------------------|-----------------------------------|---------------------|
| Chains & sprockets | Wear strips | Side guide brackets & accessories | Levelers |
| Modular belts & sprockets | Chain & belt return systems | Frame & structure supports | Bearing supports |
| Curves & tracks | Side guide solutions | Miscellaneous products | Related information |

5 1 5 2 0 c

VALU GUIDE® RAIL

www.SystemPlastSmartGuide.com



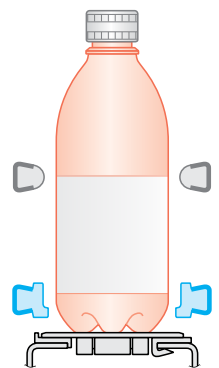
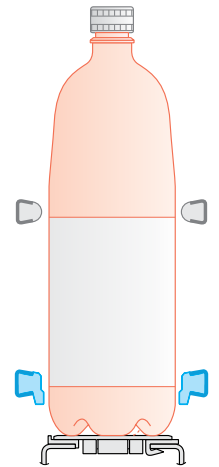
Click here for related information.

back

For clamps, go to:

5 1 5 1 0 a

| | METAL PROFILE MATERIAL | UHMWPE WHITE | UHMWPE BLACK | | |
|--|------------------------|------------------|-------------------|------|-----|
| | | ITEM DESCRIPTION | | | |
| | | VG-LSST-1.70-10 | - | 30 m | 3 m |
| | | VG-LSST-1.70-20 | - | 30 m | 6 m |
| | | VG-LSST-2.25-10 | VG-LSST-2.25-B-10 | 30 m | 3 m |
| | | VG-LSST-2.25-20 | VG-LSST-2.25-B-20 | 30 m | 6 m |
| | | VG-LSST200R-10 | - | 30 m | 3 m |
| | | VG-LSSMT008-10 | - | 30 m | 3 m |
| | | VG-LSSMT008-20 | - | 30 m | 6 m |
| | | VG-LSSMT024-10 | VG-LSSMT024-B-10 | 30 m | 3 m |
| | | VG-SSMT-10 | - | 30 m | 3 m |
| | | VG-SSMT-20 | - | 30 m | 6 m |
| | | VG-SSNG-10 | - | 30 m | 3 m |
| | | VG-SSNG-20 | - | 30 m | 6 m |



MOQ Min. order quantity: 180 m

back

| | | | |
|---------------------------|-----------------------------|-----------------------------------|---------------------|
| Chains & sprockets | Wear strips | Side guide brackets & accessories | Levelers |
| Modular belts & sprockets | Chain & belt return systems | Frame & structure supports | Bearing supports |
| Curves & tracks | Side guide solutions | Miscellaneous products | Related information |

5 1 6 0 0 a

CLAMPS FOR CONICAL SIDE GUIDES

www.SystemPlastSmartGuide.com

SINGLE CLAMP WITH PIN



For profiles, go to:

5 1 5 2 0 a



For brackets, go to:

5 3 5 1 0 a



Click here for related information.

continue ▶



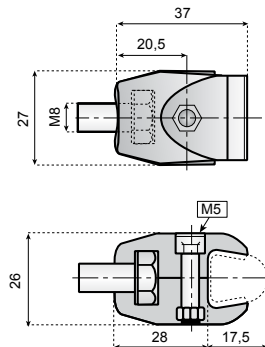
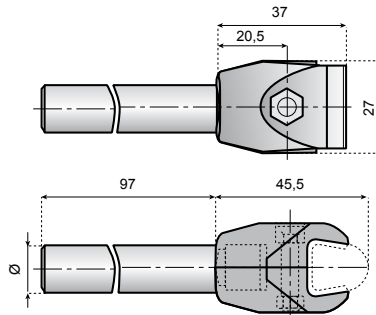
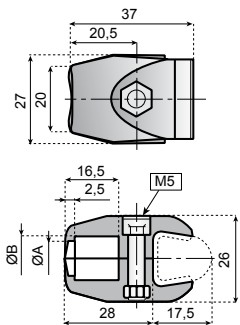
WITHOUT ROD



WITH ROD



WITH SCREW



Min. order quantity: 300 pcs.

| Ø A | Ø B | CLAMP TYPE | WITHOUT ROD | Ø 12 | Ø 14 | Ø 16 | 50 |
|-----|------|------------|------------------|----------------|----------------|----------------|----|
| | | | ITEM DESCRIPTION | | | | |
| 10 | 12 | 1 | CL-CON-P12M | CL-CON-P12100M | - | - | 50 |
| 12 | 13,5 | 2 | CL-CON-P14M | - | CL-CON-P14100M | CL-CON-P16100M | |

| WITH SCREW | ITEM DESCRIPTION | 50 |
|------------|------------------|----|
| | CL-CON-P-M8 | 50 |

Material: clamp in reinforced polyamide (PA-FG Black), bolt in stainless steel, nut in nickel plated brass.
Supply: assembled.

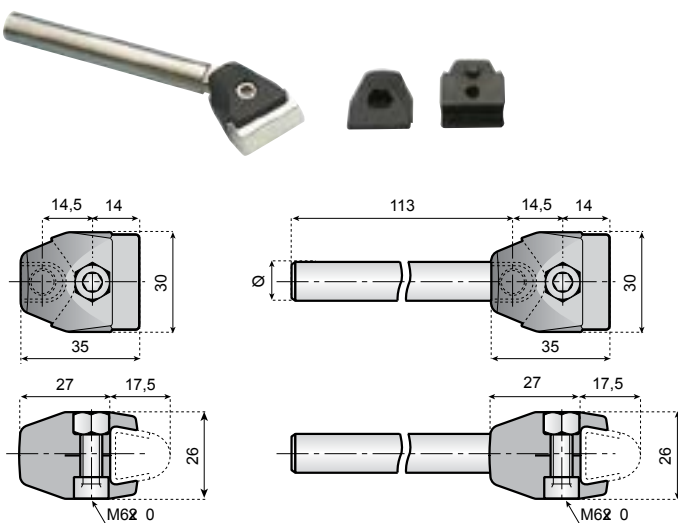
MATERIAL: clamp in reinforced polyamide (PA-FG Black), bolts in stainless steel, nut in nickel plated brass.
SUPPLY: assembled.

CLAMPS FOR CONICAL SIDE GUIDES

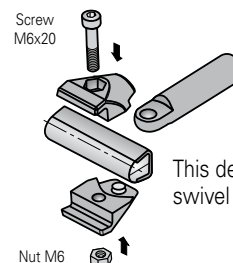
SINGLE CLAMP WITH SWIVEL PIN

Material: clamp in reinforced polyamide (PA-FG Black). Nut, screws, washer and rod in stainless steel.
Supply: assembled.

| WITHOUT ROD | Ø 12 | 50 |
|-------------|-----------------|----|
| CL-CON-PS | CL-CON-PS12100M | 50 |



APPLICATION EXAMPLE



This design allows a max. swivel angle of 120°



Click here for related information.

continue ▶



For profiles, go to:

5 1 5 2 0 a



For brackets, go to:

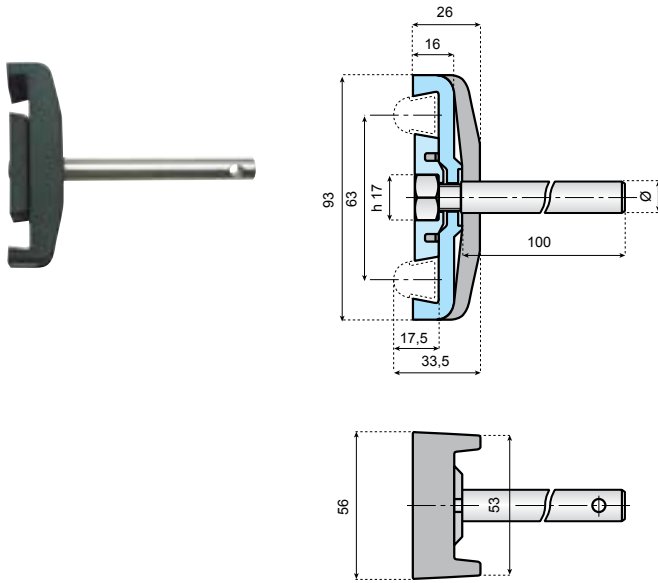
5 3 5 1 0 a

| | | | |
|---------------------------|-----------------------------|-----------------------------------|---------------------|
| Chains & sprockets | Wear strips | Side guide brackets & accessories | Levelers |
| Modular belts & sprockets | Chain & belt return systems | Frame & structure supports | Bearing supports |
| Curves & tracks | Side guide solutions | Miscellaneous products | Related information |

5 1 6 1 0 a

CLAMPS FOR CONICAL SIDE GUIDES

DOUBLE PLASTIC CLAMPS WITH ROD STANDARD



Material: reinforced polyamide, (PA-FG Black) nut, washer rod in stainless steel.
Supply: assembled.



For profiles, go to:

5 1 5 2 0 a



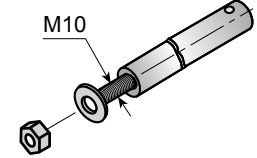
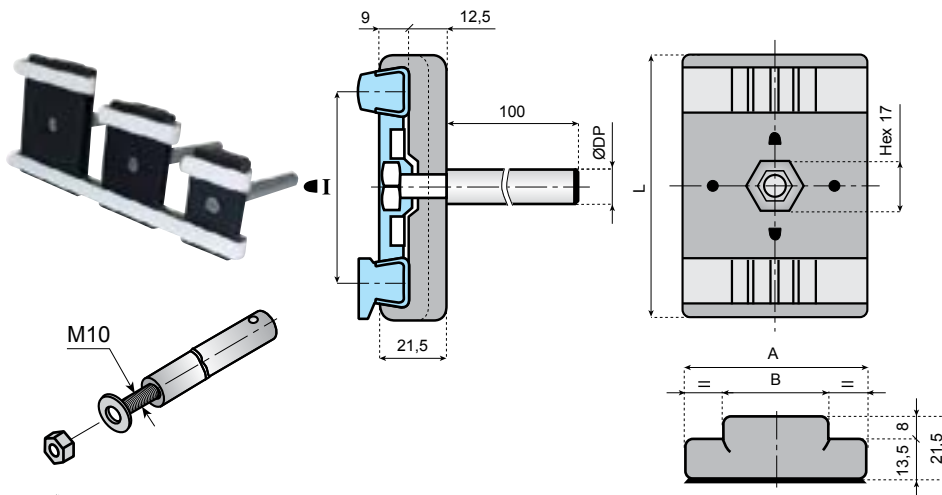
For brackets, go to:

5 3 5 1 0 a

| WITHOUT ROD | Ø 12 | Ø 14 | Ø 16 | |
|-------------------------|-----------------|-----------------|-----------------|----|
| ITEM DESCRIPTION | | | | |
| CL-CON-PD | CL-CON-PD12100M | CL-CON-PD14100M | CL-CON-PD16100M | 50 |

CLAMPS FOR CONICAL SIDE GUIDES

DOUBLE PLASTIC CLAMPS WITH ROD OTHER CENTER DISTANCES

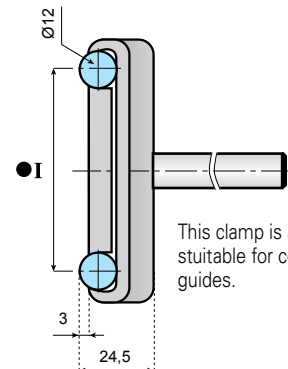


MOQ Min. order quantity: 300 pcs.

Material: reinforced polyamide (PA-FG Black), screw, washer and rod in stainless steel.
Application: the clamp is designed to be used with either the conical or Ø 12 mm round guide rails, simply by turning the internal flange plate.
Use: to support rods or conical guide rails with increased centers.
Supply: assembled.



Click here for related information.



This clamp is also suitable for conical guides.



For profiles, go to:

5 1 5 2 0 a

For brackets, go to:

5 3 5 1 0 a

| ▶ | ● | L | A | B | WITHOUT ROD | Ø 12 | Ø 14 | Ø 16 | |
|----|----|-----|----|----|--------------------------------|---------------------------------------|---------------------------------------|---------------------------------------|----|
| | | | | | ITEM DESCRIPTION | | | | |
| 47 | 51 | 70 | 43 | 30 | CL-CON-PD47 <small>mpo</small> | CL-CON-PD47-12100M <small>mpo</small> | CL-CON-PD47-14100M <small>mpo</small> | CL-CON-PD47-16100M <small>mpo</small> | 50 |
| 65 | 69 | 90 | 61 | 35 | CL-CON-PD65 | CL-CON-PD65-12100M | CL-CON-PD65-14100M | CL-CON-PD65-16100M | |
| 85 | 89 | 110 | 80 | 40 | CL-CON-PD85 | CL-CON-PD85-12100M | CL-CON-PD85-14100M | CL-CON-PD85-16100M | |



For brackets, go to:

5 3 5 1 0 a

| | | | |
|---------------------------|-----------------------------|-----------------------------------|---------------------|
| Chains & sprockets | Wear strips | Side guide brackets & accessories | Levelers |
| Modular belts & sprockets | Chain & belt return systems | Frame & structure supports | Bearing supports |
| Curves & tracks | Side guide solutions | Miscellaneous products | Related information |

5 1 6 2 0 a

CLAMPS FOR CONICAL SIDE GUIDES

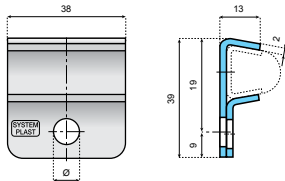
www.SystemPlastSmartGuide.com

Use: to support conical guide.
Note: Tightening bolt not included.
Material: Stainless Steel (AISI 304)



Click here for related information.

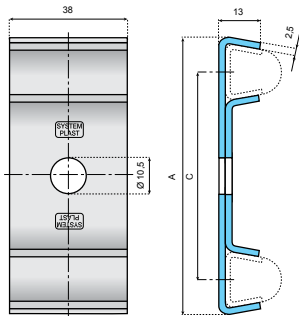
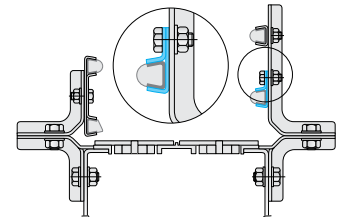
◀ back continue ▶



For profiles, go to:

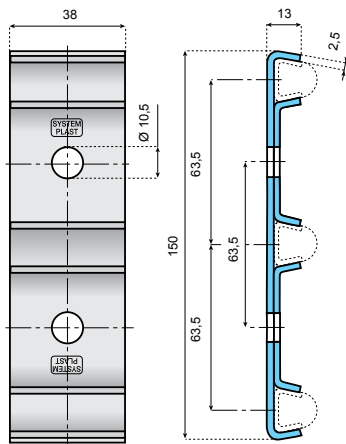
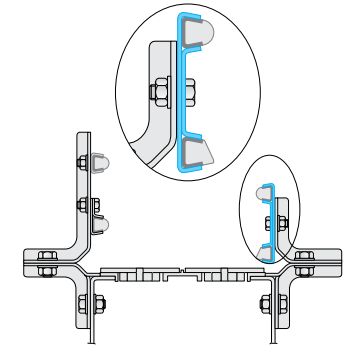
5 1 5 2 0 a

| Ø | WITHOUT ROD | |
|---|------------------|----|
| | ITEM DESCRIPTION | |
| 9 | VG-012-01 | 50 |



Note: used with toll containers or when large and small containers run on the same production line. Tightening bolt not included.

| C mm | A mm | WITHOUT ROD | |
|------|-------|------------------|----|
| | | ITEM DESCRIPTION | |
| 63,5 | 86 | VG-011-01 | 50 |
| 84 | 106,5 | VG-011-04 | |
| 95,2 | 117,7 | VG-011-03 | |

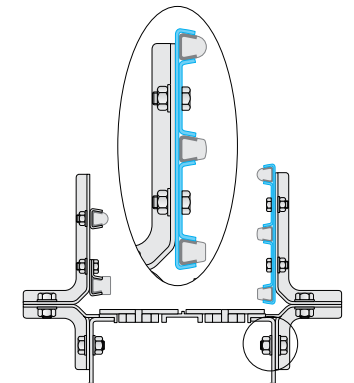


| WITHOUT ROD | |
|------------------|----|
| ITEM DESCRIPTION | |
| VG-011-02 | 50 |

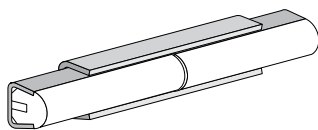


For brackets, go to:

5 3 5 1 0 a



RAIL CONNECTOR



CONNECTING ELEMENT

Use: to connect two guide rails.
The part can be tapped on with a hammer.
Material: Stainless Steel (AISI 304).

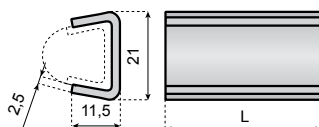


Click here for related information.



For brackets, go to:

5 3 5 1 0 a



| L mm | D THREADED SIZE = M8 | |
|------|----------------------|----|
| | ITEM DESCRIPTION | |
| 38 | VG-013-015 | 50 |
| 50 | VG-013-01 | |



For profiles, go to:

5 1 5 2 0 a

◀ back continue ▶

| | | | |
|---------------------------|-----------------------------|-----------------------------------|---------------------|
| Chains & sprockets | Wear strips | Side guide brackets & accessories | Levelers |
| Modular belts & sprockets | Chain & belt return systems | Frame & structure supports | Bearing supports |
| Curves & tracks | Side guide solutions | Miscellaneous products | Related information |



Click here for related information.

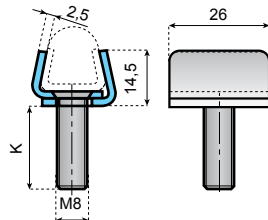
◀ back

HEAVY DUTY CLAMP

Use: two piece compression style for easy assembly and adjustment. Nut and washer not included.

Note: max recommended tightening torque 2.0 Kgm.

Material: Stainless Steel (AISI 304)



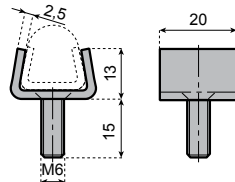
| K mm | ITEM DESCRIPTION | |
|------|-------------------|-----|
| 15,2 | VG-018M-01 | 100 |
| 20 | VG-018M-02 | |
| 25,5 | VG-018M-03 | |
| 30 | VG-018M-04 | |

SINGLE CLAMP - STAINLESS STEEL

Use: easy assembly of guide profiles.

Note: max recommended tightening torque 1.8 Kgm.

Material: Stainless Steel (AISI 304).



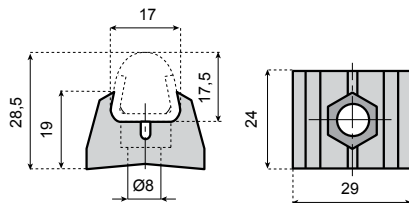
| ITEM DESCRIPTION | |
|-------------------|-----|
| VG-009M-01 | 100 |

SINGLE CLAMP - THERMOPLASTIC

Use: it connects guide rail to bracket or rod using a standard M8 cap screw.

Supply: unassembled.

Material: clamp in reinforced polyamide (PA-FG Black)



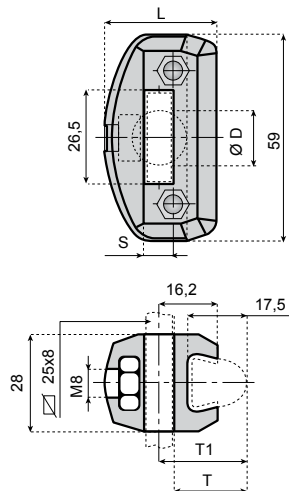
| WITHOUT ROD | |
|-------------------------|----|
| ITEM DESCRIPTION | |
| VG-016-02 | 50 |

SINGLE CLAMP FOR FLAT BAR

Material: clamp in reinforced polyamide (PA-FG Black), bolts in stainless steel, nuts in nickel plated brass.

Supply: assembled.

Use: mount on Ø 12 diameter rod or 25x6 - 25x8, 25x10 flat bar.



| FLAT BAR | ROUND BAR Ø D | L | S | T | T1 | ITEM DESCRIPTION | |
|----------|---------------|----|------|------|------|----------------------|----|
| 25x6 | Ø 12 | 34 | 6,5 | 22,5 | 25,5 | VG-022-01 | 50 |
| 25x8 | - | 33 | 9 | 21,5 | 25,5 | CL-CON-P258M | |
| | - | 40 | 9 | 28 | 32 | CL-CON-P258WM | |
| 25x10 | - | 34 | 10,5 | 21,5 | 26,5 | CL-CON-P2510M | |



For profiles, go to: **5 1 5 2 0 a**



For profiles, go to: **5 1 7 3 0 a**



For profiles, go to: **5 2 5 7 2 a**



For brackets, go to: **5 3 5 1 0 a**

◀ back

| | | | |
|---------------------------|-----------------------------|-----------------------------------|---------------------|
| Chains & sprockets | Wear strips | Side guide brackets & accessories | Levelers |
| Modular belts & sprockets | Chain & belt return systems | Frame & structure supports | Bearing supports |
| Curves & tracks | Side guide solutions | Miscellaneous products | Related information |

5 1 6 3 0 z

APPLICATION EXAMPLES

www.SystemPlastSmartGuide.com



SYSTEMS FOR SHRINK WRAPPED PRODUCTS.

LBP chains, go to:

1 1 0 1 2 a

Roller side guides, go to:

5 2 5 1 0 a



SPEEDSET™ SIDE GUIDE ADJUSTMENT SYSTEM.

For details, go to:

5 3 5 9 5 a



ACCUMULATION SYSTEM FOR SHRINK WRAPPED PRODUCTS.

LBP chains, go to:

1 1 0 1 2 a

Roller side guides, go to:

5 2 5 1 0 a

| | | | |
|---------------------------|-----------------------------|-----------------------------------|---------------------|
| Chains & sprockets | Wear strips | Side guide brackets & accessories | Levelers |
| Modular belts & sprockets | Chain & belt return systems | Frame & structure supports | Bearing supports |
| Curves & tracks | Side guide solutions | Miscellaneous products | Related information |



Click here for related information.

continue ▶

5 1 6 4 0 a

CLAMPS FOR ROUND SIDE GUIDES

www.SystemPlastSmartGuide.com

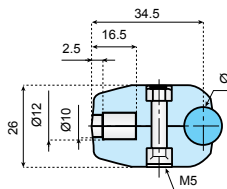
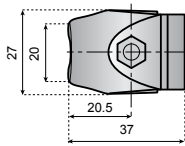


For brackets, go to:

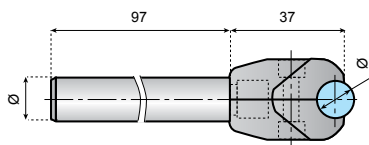
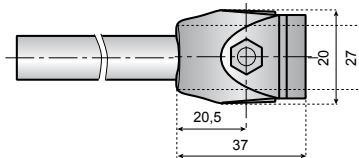
5 3 5 1 0 a



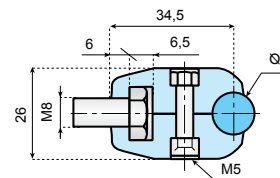
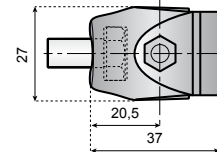
WITHOUT ROD



WITH ROD



WITH M8 SCREWS



Material: clamp in reinforced polyamide, bolt in stainless steel, nut in nickel plated brass, rod in stainless steel AISI 303.

Supply: assembled.

Material: clamp in reinforced polyamide, bolt in stainless steel, nut in nickel plated brass.

Supply: assembled.

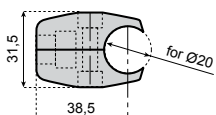
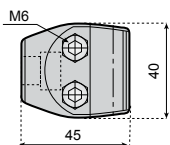
| FOR GUIDE Ø | WITHOUT ROD | Ø 12 | Ø 14 | Ø 16 | MOQ |
|-------------|------------------|-----------------|-----------------|-----------------|-----|
| | ITEM DESCRIPTION | | | | |
| 8 | CL-RD8-P | CL-RD8-P12100M | CL-RD8-P14100M | CL-RD8-P16100M | 50 |
| 10 | CL-RD10-P | CL-RD10-P12100M | CL-RD10-P14100M | CL-RD10-P16100M | |
| 12 | CL-RD12-P | CL-RD12-P12100M | CL-RD12-P14100M | CL-RD12-P16100M | |
| 14 | CL-RD14-P | CL-RD14-P12100M | CL-RD14-P14100M | CL-RD14-P16100M | |

| FOR GUIDE Ø | WITH M8 SCREWS | MOQ |
|-------------|------------------|-----|
| | ITEM DESCRIPTION | |
| 8 | CL-RD8-P-M8 | 50 |
| 10 | CL-RD10-P-M8 | |
| 12 | CL-RD12-P-M8 | |
| 14 | CL-RD14-P-M8 | |

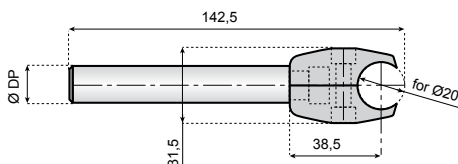
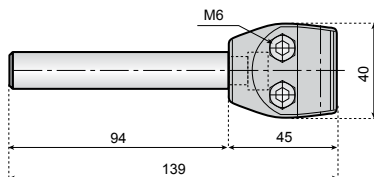
MOQ Min. order quantity: 300 pcs.



WITHOUT ROD



WITH ROD



50

Material: clamp in reinforced polyamide, bolts, nuts and rod in stainless steel.

Supply: assembled.

| WITHOUT ROD | Ø 12 | Ø 14 | Ø 16 |
|------------------|-----------------|-----------------|-----------------|
| ITEM DESCRIPTION | | | |
| CL-RD20-P | CL-RD20-P12100M | CL-RD20-P14100M | CL-RD20-P16100M |



Min. order quantity: 300 pcs.

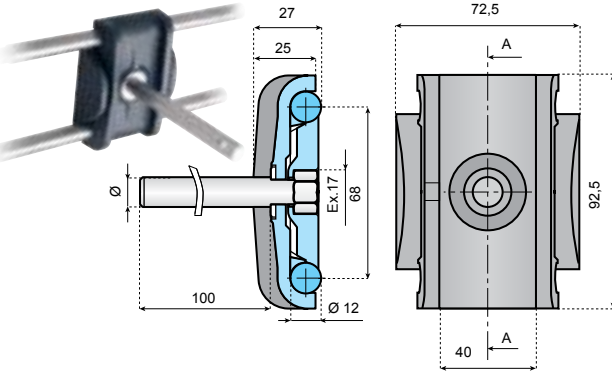
continue ▶

| | | | |
|---------------------------|-----------------------------|-----------------------------------|---------------------|
| Chains & sprockets | Wear strips | Side guide brackets & accessories | Levelers |
| Modular belts & sprockets | Chain & belt return systems | Frame & structure supports | Bearing supports |
| Curves & tracks | Side guide solutions | Miscellaneous products | Related information |

5 1 6 5 0 a

CLAMPS FOR ROUND SIDE GUIDES

DOUBLE PLASTIC CLAMPS WITH ROD STANDARD



For brackets, go to:

5 3 5 1 0 a

Material: clamp in reinforced polyamide, nut and rod in stainless steel.
Supply: assembled.



Click here for related information.

◀ back

| WITHOUT ROD | Ø 12 | Ø 14 | Ø 16 | 50 |
|------------------|------------------|------------------|------------------|----|
| ITEM DESCRIPTION | | | | |
| CL-RD12-PD | CL-RD12-PD12100M | CL-RD12-PD14100M | CL-RD12-PD16100M | |

CLAMPS FOR ROUND SIDE GUIDES

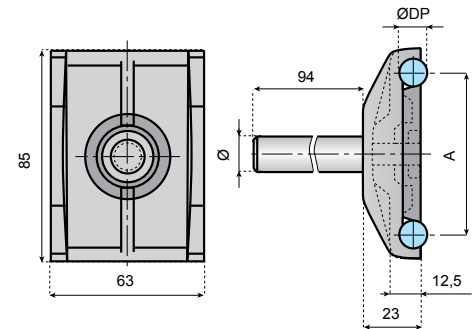
DOUBLE PLASTIC CLAMPS WITH ROD OTHER CENTER DISTANCE



Ø 8-10 mm; Ø 10-12 mm

Material: clamp in reinforced polyamide bolt, nut and rod in stainless steel AISI 304.

Use: round profile guides (8-10 and 10-12 mm) can be used simply turning the flange position.

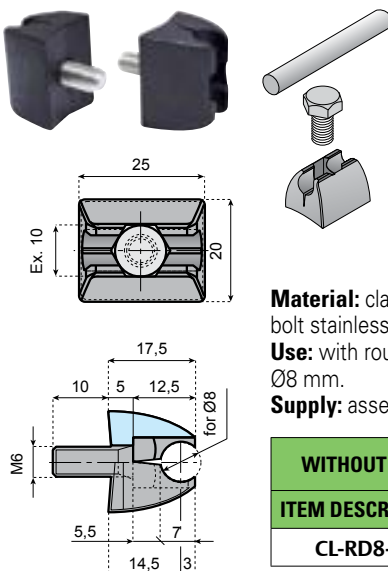


| TYPE | DP | A | WITHOUT ROD | Ø 12 | Ø 14 | Ø 16 | 50 |
|------|----|----|------------------|------------------|------------------|------------------|----|
| | | | ITEM DESCRIPTION | | | | |
| A | 8 | 68 | CL-RD8-PD | CL-RD8-PD12100M | CL-RD8-PD14100M | CL-RD8-PD16100M | |
| | 10 | 66 | | | | | |
| B | 10 | 66 | CL-RD10-PD | CL-RD10-PD12100M | CL-RD10-PD14100M | CL-RD10-PD16100M | |
| | 12 | 64 | | | | | |

APPLICATION EXAMPLE

| TYPE A | | TYPE B | |
|--|---|---|---|
| Flange position for assembling guides with diam. d = 8 mm. | Flange position for assembling guides with diam. d = 10 mm. | Flange position for assembling guides with diam. d = 10 mm. | Flange position for assembling guides with diam. d = 12 mm. |
| | | | |

PLASTIC SINGLE CLAMPS FOR FLAT BAR



Material: clamp in polyamide, bolt stainless steel.

Use: with round profile guide Ø8 mm.

Supply: assembled.

| WITHOUT ROD | 50 |
|------------------|----|
| ITEM DESCRIPTION | |
| CL-RD8-PF | |



For brackets, go to:

5 3 5 1 0 a

Material: clamp in reinforced polyamide, bolt in stainless steel, nut in nickel plated brass.
Supply: assembled.

| FOR GUIDE Ø | L | K | Y | H | H1 | WITHOUT ROD | 50 |
|-------------|----|------|----|------|------|------------------|----|
| | | | | | | ITEM DESCRIPTION | |
| 8 | 58 | 33 | 21 | 18 | 16 | CL-RD8-P258M | |
| 10 | 58 | 33 | 21 | 18,5 | 16 | CL-RD10-P258M | |
| 12 | 59 | 34.5 | 24 | 21 | 19 | CL-RD12-P258M | |
| 14 | 58 | 34 | 25 | 22 | 17.5 | CL-RD14-P258M | |

◀ back

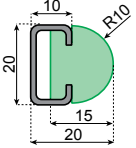
| | | | |
|---------------------------|-----------------------------|-----------------------------------|---------------------|
| Chains & sprockets | Wear strips | Side guide brackets & accessories | Levelers |
| Modular belts & sprockets | Chain & belt return systems | Frame & structure supports | Bearing supports |
| Curves & tracks | Side guide solutions | Miscellaneous products | Related information |

5 1 6 6 0 a

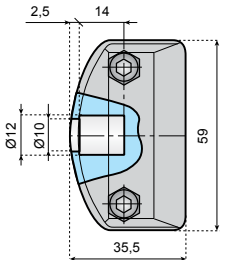
CLAMPS FOR D-SHAPE SIDE GUIDES

www.SystemPlastSmartGuide.com

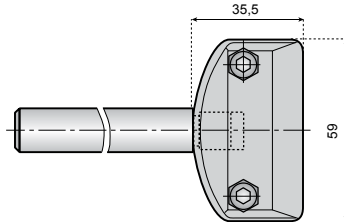
| METAL PROFILE MATERIAL | UHMWPE GREEN | UHMWPE BLACK | L |
|------------------------|------------------|--------------|----|
| | Item description | | |
| SS 304 | VG-SD-G-10 | VG-SD-B-10 | 3m |
| | VG-SD-G-20 | VG-SD-B-20 | 6m |
| Zn | VG-GD-G-10 | VG-GD-B-10 | 3m |
| | VG-GD-G-20 | VG-GD-B-20 | 6m |



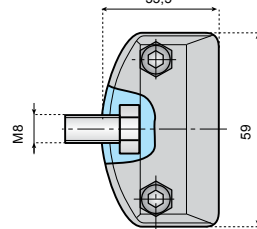
WITHOUT ROD



WITH ROD



WITH M8 SCREW



Click here for related information.



For loose profiles, go to:

5 1 6 6 0 b



For brackets, go to:

5 3 5 1 0 a



Information about this product is only available on our Smart Guide® website.

Material: clamp in reinforced polyamide, bolt in stainless steel, nut in nickel plated brass, rod in stainless steel AISI 303.

Supply: unassembled.

| WITHOUT ROD | Ø 12 | Ø 14 | Ø 16 | ITEM DESCRIPTION | 100 |
|-------------|--------------|--------------|--------------|------------------|-----|
| CL-D-P12M | CL-D-P12100M | CL-D-P14100M | CL-D-P16100M | | |

Material: clamp in reinforced polyamide, bolt in stainless steel, nut in nickel plated brass.

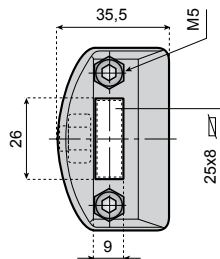
Supply: unassembled.

| WITH SCREW | ITEM DESCRIPTION | 100 |
|------------|------------------|-----|
| CL-D-P-M8 | | |

MOQ Min. order quantity: 300 pcs.

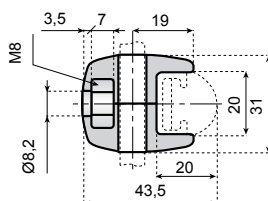
SINGLE PLASTIC CLAMP FOR FLAT BAR

DOUBLE PLASTIC CLAMP WITH ROD

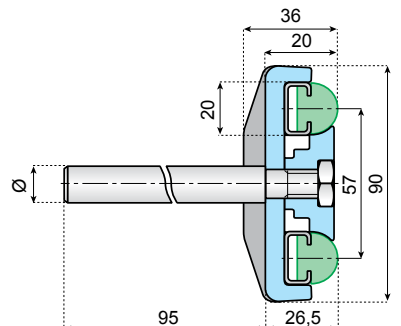


Material: clamp in reinforced polyamide, bolt in stainless steel, nut in nickel plated brass.

Supply: assembled.



| WITHOUT ROD | ITEM DESCRIPTION | 100 |
|-------------|------------------|-----|
| CL-D-P258M | | |



Material: clamp in reinforced polyamide, nut and rod in stainless steel.

Supply: unassembled.

| WITHOUT ROD | Ø 12 | Ø 14 | Ø 16 | ITEM DESCRIPTION | 100 |
|-------------|---------------|---------------|---------------|------------------|-----|
| CL-D-PD | CL-D-PD12100M | CL-D-PD14100M | CL-D-PD16100M | | |

| | | | |
|---------------------------|-----------------------------|-----------------------------------|---------------------|
| Chains & sprockets | Wear strips | Side guide brackets & accessories | Levelers |
| Modular belts & sprockets | Chain & belt return systems | Frame & structure supports | Bearing supports |
| Curves & tracks | Side guide solutions | Miscellaneous products | Related information |

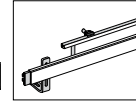
5 1 6 6 0 b

D-SHAPE PRODUCT GUIDES

www.SystemPlastSmartGuide.com

For index side guides, go to:

5 1 5 1 0 a



Click here for related information.

| | STAINLESS STEEL | ZINC PLATED STEEL | |
|--|-------------------------|-------------------|----|
| | ITEM DESCRIPTION | | |
| | VG-S1020M-10 | VG-G1020M-10 | 3m |
| | VG-S1020M-20 | VG-G1020M-20 | 6m |
| | UHMWPE GREEN | UHMWPE BLACK | |
| | ITEM DESCRIPTION | | |
| | VG-PD-G-10 | VG-PD-B-10 | 3m |
| | VG-PD-G-20 | VG-PD-B-20 | 6m |



For clamps for D-shape side guides, go to:

5 1 6 6 0 a

| | | | |
|---------------------------|-----------------------------|-----------------------------------|---------------------|
| Chains & sprockets | Wear strips | Side guide brackets & accessories | Levelers |
| Modular belts & sprockets | Chain & belt return systems | Frame & structure supports | Bearing supports |
| Curves & tracks | Side guide solutions | Miscellaneous products | Related information |

5 1 6 8 0 a

PRODUCT GUIDES AND CLAMPS FOR FLAT SIDE GUIDES

www.SystemPlastSmartGuide.com

GUIDE RAILS (FLAT TYPE)

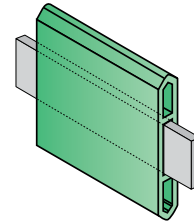
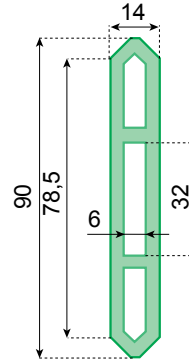
Material: Polyethylene PE 500 (green).

Characteristics:

- Profile can be bent or calendered by means of usual systems.
- Coefficient of linear expansion: 2.5×10^{-4} .
- Temperature range for continuous use in air: $-35^{\circ}\text{C} / +70^{\circ}\text{C}$.
- Min. bending radius: 200 mm.

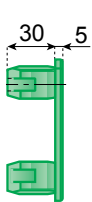
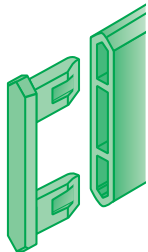
Notes: when sealing the ends a 2 mm space must be left between the silicone and the end of the bar to compensate for linear contraction of the guide rail at low temperatures.

Characteristics: To use this guide, a 30x5 mm steelbar should be inserted.



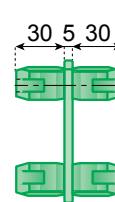
Click here for related information.

| ITEM DESCRIPTION | | |
|-------------------------------|------|-----|
| MATERIAL: PE-500 GREEN | | |
| VG-H9014M-G-10 | 30 m | 3 m |
| VG-H9014M-G-20 | | 6 m |



END-PLUG

| ITEM DESCRIPTION | |
|-------------------------------|----|
| MATERIAL: PE-500 GREEN | |
| PEN-H9014M-G | 10 |



CONNECTING PLUG

| ITEM DESCRIPTION | |
|-------------------------------|----|
| MATERIAL: PE-500 GREEN | |
| PCO-H9014M-G | 10 |



CLAMP WITH SWIVEL ROD

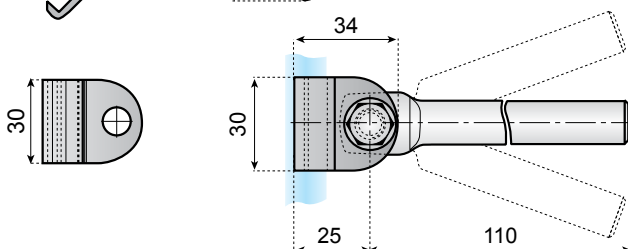
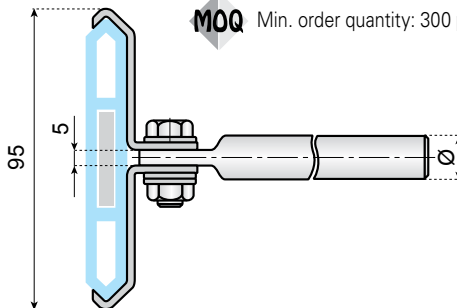
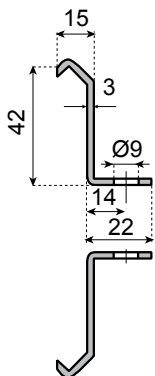
Surface: tumbling finish.

Supply: unassembled.

Material: Stainless Steel (AISI 304)

| WITHOUT ROD | Ø 12 | Ø 14 | Ø 16 | |
|-------------------------|--------------------------|---|---|----|
| ITEM DESCRIPTION | | | | |
| CL-H9014M-S | CL-H9014M-S12100M | CL-H9014M-S14100M <small>MOQ</small> | CL-H9014M-S16100M <small>MOQ</small> | 50 |

MOQ Min. order quantity: 300 pcs.



For brackets, go to:

5 3 5 1 0 a

| | | | |
|---------------------------|-----------------------------|-----------------------------------|---------------------|
| Chains & sprockets | Wear strips | Side guide brackets & accessories | Levelers |
| Modular belts & sprockets | Chain & belt return systems | Frame & structure supports | Bearing supports |
| Curves & tracks | Side guide solutions | Miscellaneous products | Related information |

5 1 6 9 0 a

PRODUCT GUIDES AND ACCESSORIES FOR SIDE GUIDES

www.SystemPlastSmartGuide.com

LARGE TYPE

GUIDE RAILS (FLAT TYPE)

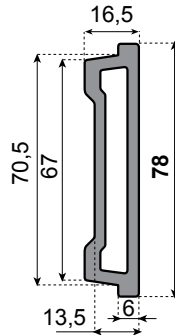
Material: Polyethylene PE 500.

Characteristics:

- Profile can be bent or calendered by means of usual systems.
- Coefficient of linear expansion: 2.5×10^{-4} .
- Temperature range for continuous use in air: -35°C / +70°C.
- Min. bending radius: 200 mm.

Notes: when sealing the ends a 2 mm space must be left between the silicone and the end of the bar to compensate for linear contraction of the guide rail at low temperatures.

Characteristics: To use this guide, a 60x6 mm steel bar or double M-Profile should be inserted.



For brackets, go to:

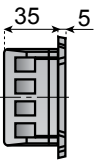
5 3 5 1 0 a



Click here for related information.

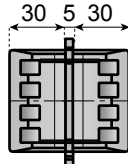
| ITEM DESCRIPTION | | | |
|------------------|-------------------|------|-----|
| PE-500 BLACK | PE-500 LIGHT BLUE | 30 m | 3 m |
| VG-H7816M-B-10 | VG-H7816M-BL-10 | | 3 m |
| VG-H7816M-B-20 | VG-H7816M-BL-20 | | 6 m |

END-PLUG



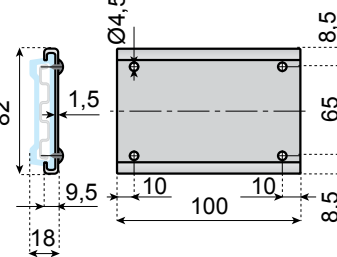
| ITEM DESCRIPTION | |
|------------------|----|
| PA-FG BLACK | |
| PEN-H7816M-B | 10 |

CONNECTOR PLUG



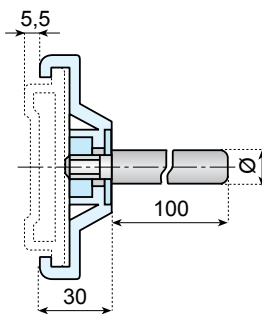
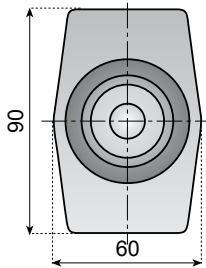
| ITEM DESCRIPTION | |
|------------------|----|
| PA-FG BLACK | |
| PCO-H7816M-B | 10 |

CONNECTOR CLAMP



| ITEM DESCRIPTION | |
|--------------------------|-----|
| STAINLESS STEEL AISI 304 | |
| CON-H7816M-S | 10* |

Surface: brush finish.
*Packaging: 10 pieces, complete with fixing screws.



50

CLAMP WITH ROD

Material: clamp in reinforced polyamide, bolt and rod in stainless steel.

| WITHOUT ROD | Ø 12 | Ø 14 | Ø 16 |
|------------------|-------------------|-------------------|-------------------|
| ITEM DESCRIPTION | | | |
| CL-H7816M-P | CL-H7816M-P12100M | CL-H7816M-P14100M | CL-H7816M-P16100M |

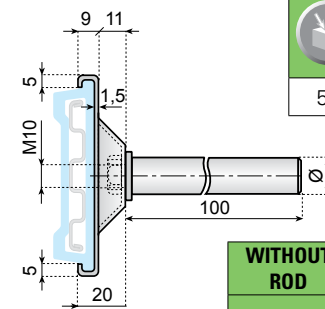
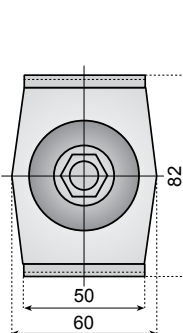


50

CLAMP WITH ROD

One piece
Material: clamp, washer and rod in stainless steel AISI 304.
Surface: scotch brite finish. Supply: unassembled.

MOQ Min. order quantity: 300 pcs.



| WITHOUT ROD | Ø 12 | Ø 14 | Ø 16 |
|------------------|-------------------|----------------------------------|----------------------------------|
| ITEM DESCRIPTION | | | |
| CL-H7816M-S | CL-H7816M-S12100M | CL-H7816M-S14100M ^{MOQ} | CL-H7816M-S16100M ^{MOQ} |



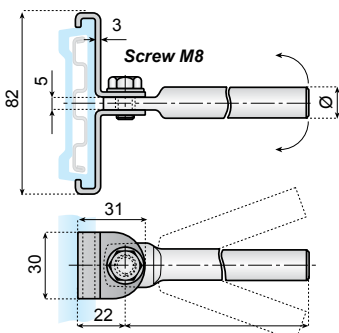
50

CLAMP SWIVEL TYPE

Two pieces
Material: clamp, screws, washer and rod in stainless steel AISI 304.
Surface: tumbling finish. Supply: unassembled.

| WITHOUT ROD | Ø 12 | Ø 14 | Ø 16 |
|------------------|--------------------|-----------------------------------|-----------------------------------|
| ITEM DESCRIPTION | | | |
| CL-H7816M-SS | CL-H7816M-SS12100M | CL-H7816M-SS14100M ^{MOQ} | CL-H7816M-SS16100M ^{MOQ} |

MOQ Min. order quantity: 300 pcs.



| | | | |
|---------------------------|-----------------------------|-----------------------------------|---------------------|
| Chains & sprockets | Wear strips | Side guide brackets & accessories | Levelers |
| Modular belts & sprockets | Chain & belt return systems | Frame & structure supports | Bearing supports |
| Curves & tracks | Side guide solutions | Miscellaneous products | Related information |

5 1 7 0 0 a

PRODUCT GUIDES AND ACCESSORIES FOR SIDE GUIDES

www.SystemPlastSmartGuide.com

LARGE TYPE

GUIDE RAILS (FLAT TYPE)

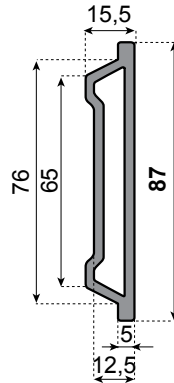
Material: Polyethylene PE 500.

Characteristics:

- Profile can be bent or calendered by means of usual systems.
- Coefficient of linear expansion: 2.5×10^{-4} .
- Temperature range for continuous use in air: $-35^{\circ}\text{C} / +70^{\circ}\text{C}$.
- Min. bending radius: 200 mm.

Notes: when sealing the ends a 2 mm space must be left between the silicone and the end of the bar to compensate for linear contraction of the guide rail at low temperatures.

Characteristics: To use this guide, a 60x6 mm steel bar or double M-Profile should be inserted.



For brackets, go to:

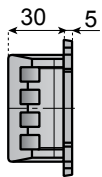
5 3 5 1 0 a



Click here for related information.

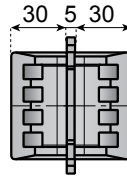
| ITEM DESCRIPTION | | | |
|-----------------------|--------------------------|------|-----|
| PE-500 BLACK | PE-500 LIGHT BLUE | 30 m | 3 m |
| VG-H8716M-B-10 | VG-H8716M-BL-10 | | |
| VG-H8716M-B-20 | VG-H8716M-BL-20 | | 6 m |

END-PLUG



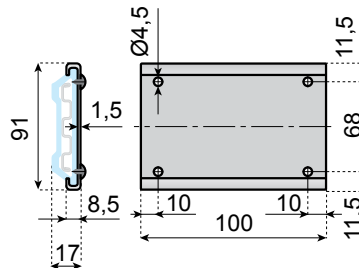
| ITEM DESCRIPTION | |
|---------------------|----|
| PA-FG BLACK | |
| PEN-H8716M-B | 10 |

CONNECTOR PLUG



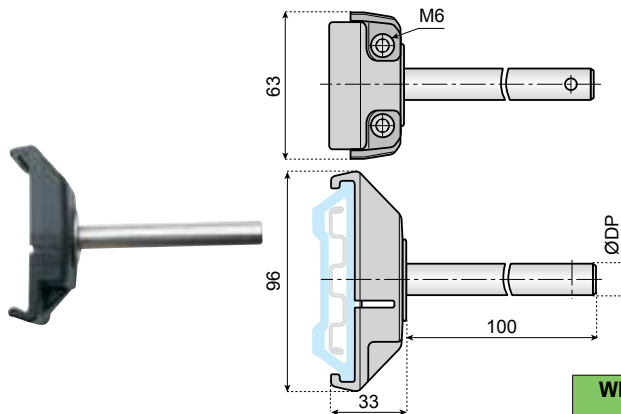
| ITEM DESCRIPTION | |
|---------------------|----|
| PA-FG BLACK | |
| PCO-H8716M-B | 10 |

CONNECTOR CLAMP



| ITEM DESCRIPTION | |
|---------------------------------|-----|
| STAINLESS STEEL AISI 304 | |
| CON-H8716M-S | 10* |

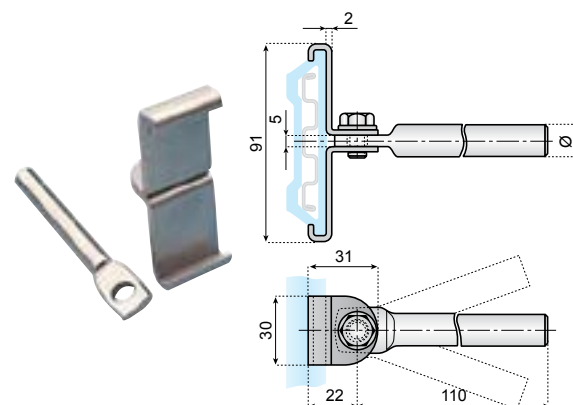
Surface: brush finish.
*Packaging: 10 pieces, complete with fixing screws.



CLAMP WITH ROD

Material: clamp in reinforced polyamide, bolt and rod in stainless steel.
Supply: unassembled.

| WITHOUT ROD | Ø 12 | Ø 14 | Ø 16 | |
|--------------------|--------------------------|--------------------------|--------------------------|----|
| ITEM DESCRIPTION | | | | 50 |
| CL-H8716M-P | CL-H8716M-P12100M | CL-H8716M-P14100M | CL-H8716M-P16100M | |



CLAMP SWIVEL TYPE

Surface: tumbling finish.
Supply: unassembled.

| WITHOUT ROD | Ø 12 | Ø 14 | Ø 16 | |
|---------------------|---------------------------|---------------------------|---------------------------|----|
| ITEM DESCRIPTION | | | | 50 |
| CL-H8716M-SS | CL-H8716M-SS12100M | CL-H8716M-SS14100M | CL-H8716M-SS16100M | |

MOQ Min. order quantity: 300 pcs.

| | | | |
|---------------------------|-----------------------------|-----------------------------------|---------------------|
| Chains & sprockets | Wear strips | Side guide brackets & accessories | Levelers |
| Modular belts & sprockets | Chain & belt return systems | Frame & structure supports | Bearing supports |
| Curves & tracks | Side guide solutions | Miscellaneous products | Related information |

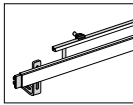
5 1 7 1 0 a

PRODUCT GUIDES

www.SystemPlastSmartGuide.com

For index side guides, go to:

5 1 5 1 0 a



| | UHMWPE BLACK | | | |
|--|------------------------|-----|------|------|
| | ITEM DESCRIPTION | | | |
| | VG-P840DBM-B-10 | 3 m | 30 m | 0,55 |
| | VG-DB83M-B-10 | 3 m | 30 m | 0,72 |



| | | | UHMWPE BLACK | UHMWPE WHITE | | | |
|---------------------|----|----|------------------|------------------------|----------------------|------|-------|
| | | | ITEM DESCRIPTION | ITEM DESCRIPTION | | | |
| <p>not included</p> | ØD | A | C | | | | |
| | 8 | 13 | 0.3 | VG-P8MRD-B-100 | VG-P8MRD-100 | 30 m | 0,046 |
| | 10 | 15 | 0.5 | VG-P10MRD-B-100 | VG-P10MRD-100 | 30m | 0,056 |
| | 12 | 17 | 1 | VG-P12MRD-B-100 | VG-P12MRD-100 | 30 m | 0,062 |

| | | | |
|---------------------------|-----------------------------|-----------------------------------|---------------------|
| Chains & sprockets | Wear strips | Side guide brackets & accessories | Levelers |
| Modular belts & sprockets | Chain & belt return systems | Frame & structure supports | Bearing supports |
| Curves & tracks | Side guide solutions | Miscellaneous products | Related information |

5 1 7 1 0 z

APPLICATION EXAMPLES

www.SystemPlastSmartGuide.com



SINGLE LINE CONVEYOR SYSTEM WITH SANITARY SIDE GUIDES.

For side guides, go to:

5 1 5 2 0 a



RUBBER TOP MODULAR BELTS WITH ROLLER SIDE GUIDES.

For modular belts with rubber surface, go to:

3 0 0 1 0 a

Roller side guides, go to:

5 2 5 1 0 a



ACCUMULATION SYSTEM FOR SHRINK WRAPPED PRODUCTS.

LBP chains, go to:

1 1 0 1 2 a

Roller side guides, go to:

5 2 5 1 0 a

| | | | |
|---------------------------|-----------------------------|-----------------------------------|---------------------|
| Chains & sprockets | Wear strips | Side guide brackets & accessories | Levelers |
| Modular belts & sprockets | Chain & belt return systems | Frame & structure supports | Bearing supports |
| Curves & tracks | Side guide solutions | Miscellaneous products | Related information |

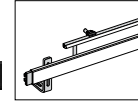
51720a

NECK GUIDES FOR PET CONTAINERS

www.SystemPlastSmartGuide.com

For index side guides, go to:

51510a



Click here for related information.



Helps guide PET and HDPE containers in high speed, air conveying applications. Nolu®-SR is a proprietary alloy of reinforced UHMWPE and other USDA accepted lubricants, resulting in a harder, lower friction material that is ideal in these applications. Though design differ, the material of choice is Nolu-SR, proven to increase throughput, reduce jams and wear longer.

Material: Nolu®-SR is a special UHMWPE with modified molecular structure that helps guide PET containers in high speed applications.

Nolu®-SX has same characteristics as Nolu-SR, but with reduced thermal expansion (up to 40%)



NOLU®-SR UHMWPE - DARK GREY
NOLU®-SX UHMWPE - DARK GREY



ITEM DESCRIPTION

For details and code, go to:

50650a

| | | | |
|--|---|------|------|
| | For details and code, go to: 50650a | | |
| | VG-NG47-SR-100 | 30 m | 30 m |
| | VG-NG49-SX-100 | 30 m | 30 m |
| | VG-NG50-SX-100 | 30 m | 30 m |
| | VG-NG81-SX-100 | 30 m | 30 m |
| | VG-NG91-SR-100 | 30 m | 30 m |
| | VG-NG110-SR-100 | 30 m | 30 m |
| | VG-NG125-SX-100 | 30 m | 30 m |

| | | | |
|---------------------------|-----------------------------|-----------------------------------|---------------------|
| Chains & sprockets | Wear strips | Side guide brackets & accessories | Levelers |
| Modular belts & sprockets | Chain & belt return systems | Frame & structure supports | Bearing supports |
| Curves & tracks | Side guide solutions | Miscellaneous products | Related information |

5 1 7 3 0 a

GUIDES FOR PET BOTTLES

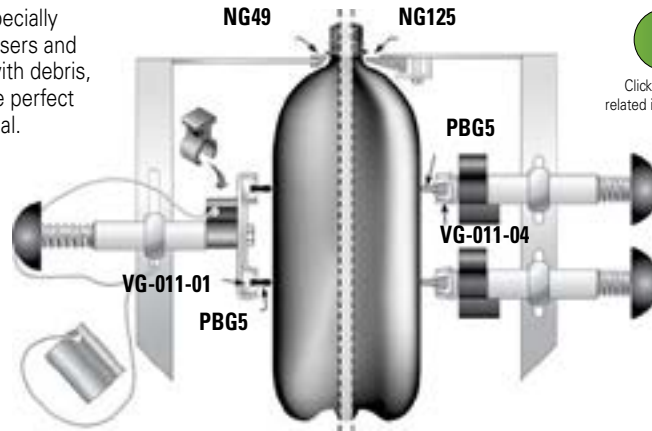
Aluminum guide rail with Nolu®-S insert is used to guide containers, especially PET and HDPE, in application such as air conveying. Many air conveyor users and manufacturers have found that brush guides tend to get contaminated with debris, which causes increased friction and marking of PET bottles. Nolu-S is the perfect combination of extremely low friction in a tough UHMWPE based material.

NOLU®-S will not mark bottles while allowing faster speeds and greater throughput.



For clamps, go to:

5 1 5 1 0 a



Click here for related information.

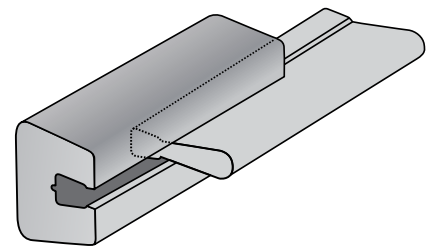
| ALUMINIUM | NOLU®-S | NOLU®-S ANTISTATIC | | | | |
|------------------|-----------|--------------------|-----|------|------|------|
| ITEM DESCRIPTION | | | | | | |
| | VG-ABG-10 | - | 3 m | - | 30 m | 0.50 |
| | VG-ABG-20 | - | 6 m | - | 60 m | 0.50 |
| | - | VG-PBG7-NS-100 | - | 30 m | 30 m | 0.10 |
| | - | VG-PBG7-NSD-100 | - | 30 m | 30 m | 0.10 |



NOLU®-S
NOLU®-SR neck guides and **NOLU-S** body guides, with an ultra low coefficient of friction, reduces the degree of bottle tilt and the corresponding wear problems.



OTHER GUIDES
Other guides (especially brushes), when contaminated, can cause irregular tilt and orientation of the bottles, resulting in blockage at curves or inclines.



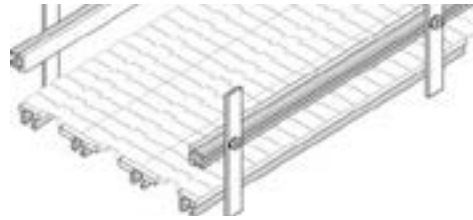
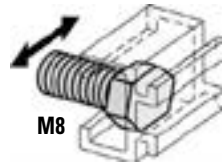
| | | | | | | | |
|--|----------------|----------------|-----------------|---|------|------|------|
| | VG-ABG2-10 | - | 3m | - | 30 m | 0.50 | |
| | VG-ABG2-20 | - | 6 m | - | 60 m | | |
| | - | VG-PBG5-NS-100 | VG-PBG5-NSD-100 | - | 30 m | 30 m | 0.10 |
| | VG-ABG26-BR-10 | - | - | - | 30 m | 0.59 | |

| | | | |
|---------------------------|-----------------------------|-----------------------------------|---------------------|
| Chains & sprockets | Wear strips | Side guide brackets & accessories | Levelers |
| Modular belts & sprockets | Chain & belt return systems | Frame & structure supports | Bearing supports |
| Curves & tracks | Side guide solutions | Miscellaneous products | Related information |

5 1 7 4 0 a

ALUMINIUM GUIDE RAIL

www.SystemPlastSmartGuide.com



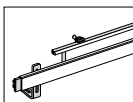
Click here for related information.

continue ▶

| A | UHMWPE WHITE | ANODIZED ALUMINIUM | | | | |
|--------------------|---------------------|--------------------|-----|------|------|------|
| | ITEM DESCRIPTION | | | | | |
| | - | VG-A600A-10 | 3 m | - | 30 m | |
| | - | VG-A600A-20 | 6 m | - | 60 m | |
| | VG-P813-10 | - | 3 m | - | 30 m | |
| | VG-P813-20 | - | 6 m | - | 60 m | |
| | VG-P813-100 | - | - | 30 m | 30m | |
| | VG-P813F-10 | - | 3 m | - | 30 m | |
| | VG-P813F-20 | - | 6 m | - | 60 m | |
| | VG-P813F-100 | - | - | 30 m | 30m | |
| | 25 | VG-P816F-10 | - | 3 m | - | 30 m |
| | | VG-P816F-20 | - | 6 m | - | 60 m |
| | 35 | VG-P822F-10 | - | 3 m | - | 30 m |
| VG-P822F-20 | | - | 6 m | - | 60 m | |
| 53 | VG-P834F-10 | - | 3 m | - | 30 m | |
| | VG-P834F-20 | - | 6 m | - | 60 m | |

For index side guides, go to:

5 1 5 1 0 a



continue ▶

| | | | |
|---------------------------|-----------------------------|-----------------------------------|---------------------|
| Chains & sprockets | Wear strips | Side guide brackets & accessories | Levelers |
| Modular belts & sprockets | Chain & belt return systems | Frame & structure supports | Bearing supports |
| Curves & tracks | Side guide solutions | Miscellaneous products | Related information |

5 1 7 4 0 b

ALUMINIUM GUIDE RAIL

www.SystemPlastSmartGuide.com

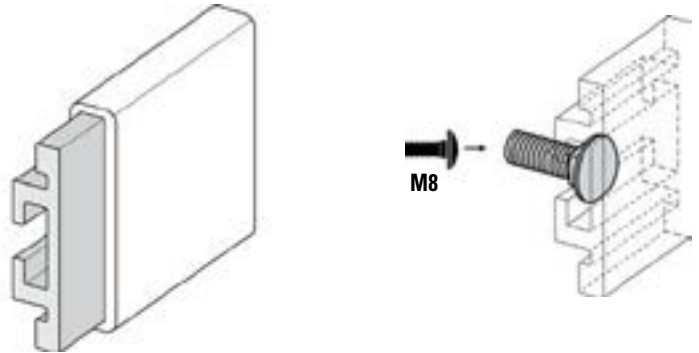
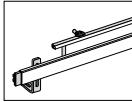


Click here for related information.

◀ back

For index side guides, go to:

5 1 5 1 0 a



| | UHMWPE WHITE | ALUMINIUM | | |
|--|----------------------|--------------------|-----|------|
| | ITEM DESCRIPTION | | | |
| | - | VG-A2520-10 | 3 m | 30 m |
| | - | VG-A2520-20 | 6 m | 60 m |
| | VG-P2520BC-10 | - | 3 m | 30 m |
| | VG-P2520BC-20 | - | 6 m | 60 n |

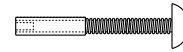
◀ back

| | | | |
|---------------------------|-----------------------------|-----------------------------------|---------------------|
| Chains & sprockets | Wear strips | Side guide brackets & accessories | Levelers |
| Modular belts & sprockets | Chain & belt return systems | Frame & structure supports | Bearing supports |
| Curves & tracks | Side guide solutions | Miscellaneous products | Related information |

5 1 8 1 0 a

SIDE GUIDE ADJUSTMENT IN CURVES

www.SystemPlastSmartGuide.com

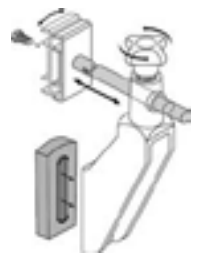
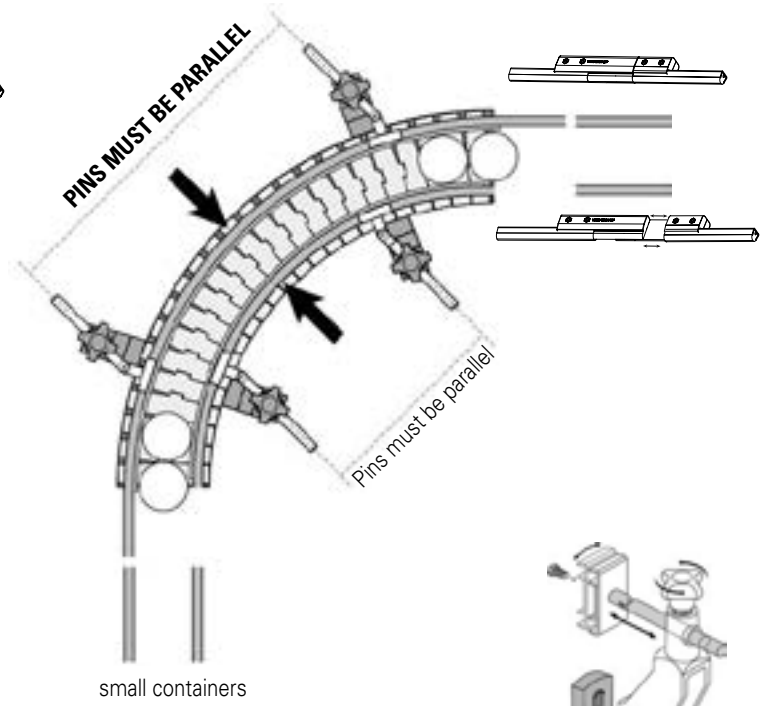
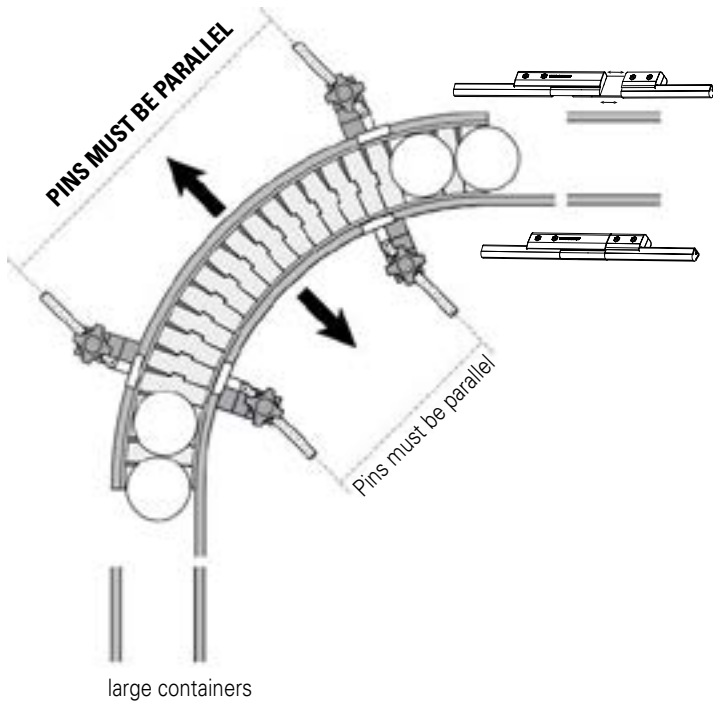


For Speedset™ brackets, go to:

5 3 5 9 5 a



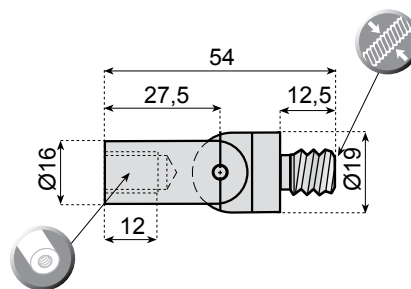
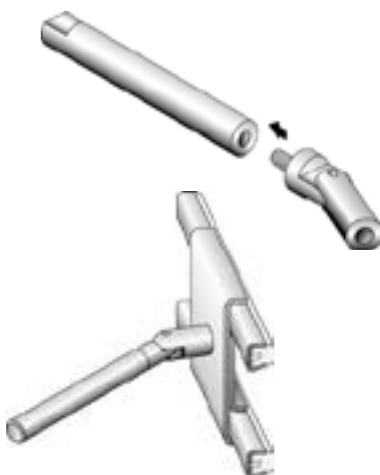
Click here for related information.



Loosen the brackets knob, slide the pins into position, then re-tighten the bracket knobs.

BRACKET SPACERS FOR ROD USE

Spacers may be required for proper set back of the brackets to allow for the jointed adjusting rod clevis extension.



JOINT ROD ADAPTER

| ITEM DESCRIPTION | | | |
|---------------------|-----|-----|----|
| VG-222JQ-M8 | M8 | M8 | 10 |
| VG-222JQ-M10 | M10 | M10 | |

| | | | |
|---------------------------|-----------------------------|-----------------------------------|---------------------|
| Chains & sprockets | Wear strips | Side guide brackets & accessories | Levelers |
| Modular belts & sprockets | Chain & belt return systems | Frame & structure supports | Bearing supports |
| Curves & tracks | Side guide solutions | Miscellaneous products | Related information |

5 1 8 2 0 a

PLASTIC ADJUSTMENT CLAMP SYSTEMS

www.SystemPlastSmartGuide.com



Click here for related information.

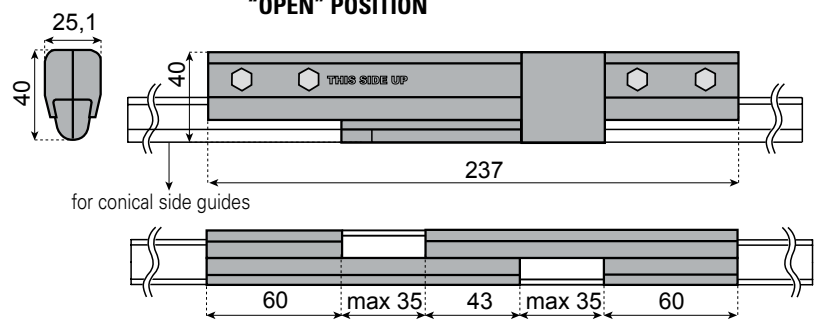
ADJUSTABLE GUIDE RAIL CLAMP

Material: clamp in PA, bolts in stainless steel nuts in nickel plated brass.

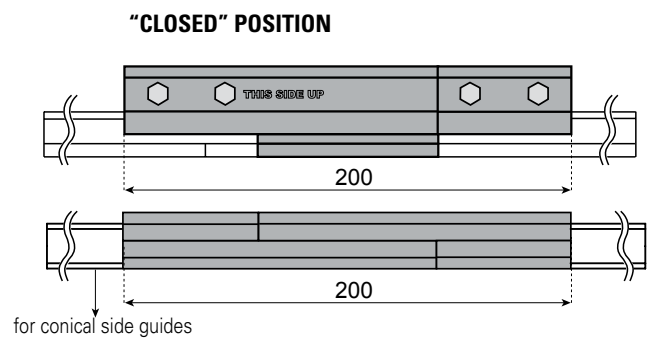
Supply: assembled.

| ITEM DESCRIPTION | |
|------------------|----|
| CL-CON-R | 10 |

"OPEN" POSITION



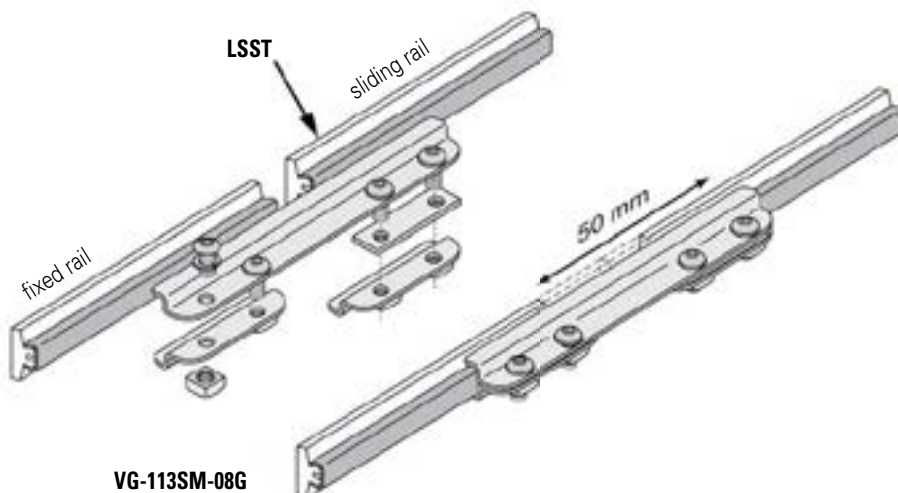
"CLOSED" POSITION



Use for profile:
VG-LSSR.. go to:

5 1 5 2 0 a

STAINLESS STEEL ADJUSTMENT CLAMP



VG-113SM-08G



Patent N°. 6, 053, 654

ADJUSTABLE SPLICING CLAMP

Allows one rail to slide within the clamp while the other remains fixed.

| L mm | WITHOUT ROD | |
|------|------------------|---|
| | ITEM DESCRIPTION | |
| 203 | VG-113SM-08G | 2 |

| | | | |
|---------------------------|-----------------------------|-----------------------------------|---------------------|
| Chains & sprockets | Wear strips | Side guide brackets & accessories | Levelers |
| Modular belts & sprockets | Chain & belt return systems | Frame & structure supports | Bearing supports |
| Curves & tracks | Side guide solutions | Miscellaneous products | Related information |

51830a

ADJUSTING RODS

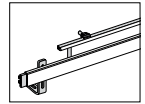
www.SystemPlastSmartGuide.com

MATERIAL: Stainless Steel (AISI 303)

MOQ Min. order quantity applicable.



Click here for related information.



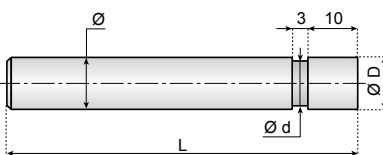
For index side guides, go to:
51510a

Use with code: CL-RD20-P.

| FOR ROD Ø 12 | | |
|-------------------------|-----|----|
| ITEM DESCRIPTION | | |
| PK-D12M110 | 110 | 50 |

Use with code: CL-CON-PS.

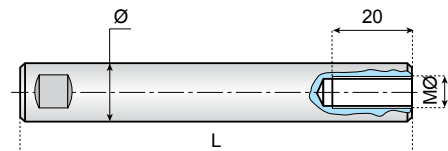
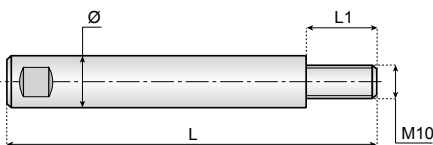
| FOR ROD Ø 12 | | |
|-------------------------|-----|----|
| ITEM DESCRIPTION | | |
| PE7-D12M120 | 120 | 50 |



Use with code: CL-CON-P12M, CL-D-P12100M, CL-RD12-P, CL-RD14-P.

| Ø D | Ø D | FOR ROD Ø 12 | FOR ROD Ø 14 | FOR ROD Ø 16 | | |
|------|------|------------------|----------------|----------------|-----|----|
| | | ITEM DESCRIPTION | | | | |
| 9,5 | 12 | PG395-D12M110 | PG395-D14M110 | PG395-D16M110 | 110 | 50 |
| 9,5 | 12 | PG395-D12M160 | - | - | 160 | |
| 11,5 | 13,5 | - | PG3115-D14M110 | PG3115-D16M110 | 110 | |

| FOR ROD Ø 12 | FOR ROD Ø 14 | | |
|-------------------------|--------------|-----|----|
| ITEM DESCRIPTION | | | |
| P-D12M200 | P-D14M200 | 200 | 50 |

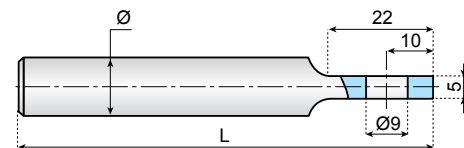
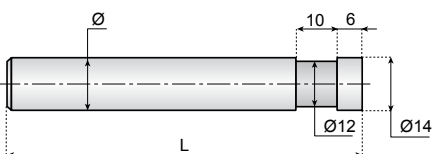


Use with code: CL-CON-PD, CL-RD10-PD, CL-CON-PD85, CL-RD8-PD, CL-H8716M-P, CL-D-PD (Code: PM10M25-D12M120), CL-H7816M-S (Code: PM10M17-D12M120, PM10M17-D16L120).

Use with code: VG-016-02, VG-011-01, VG-012-01, CL-CON-P-M8, CL-D-P-M8, CL-RD12-P-M8, CL-RD14-P-M8

| L1 | FOR ROD Ø 12 | FOR ROD Ø 16 | | |
|----|------------------|--------------------------------|-----|----|
| | ITEM DESCRIPTION | | | |
| 17 | PM10M17-D12M120 | PM10M17-D16L120 ^{MOQ} | 120 | 50 |
| 19 | PM10M19-D12M120 | PM10M19-D16L120 | 120 | |
| 19 | PM10M19-D12M170 | - | 170 | |
| 25 | PM10M25-D12M120 | - | 120 | |

| M Ø | FOR ROD Ø 12 | FOR ROD Ø 14 | FOR ROD Ø 16 | | |
|-----|------------------|-------------------------------|-------------------------------|-----|----|
| | ITEM DESCRIPTION | | | | |
| M8 | PF8M20-D12M100 | PF8M20-D14M100 | PF8M20-D16M100 | 100 | 50 |
| M10 | PF10M20-D12M100 | - | - | 100 | |
| M8 | PF8M20-D12M150 | PF8M20-D14M150 | PF8M20-D16M150 | 150 | |
| M8 | PF8M20-D12M200 | PF8M20-D14M200 ^{MOQ} | PF8M20-D16M200 ^{MOQ} | 200 | |



USE WITH CODE: CL-RD20-P

| FOR ROD Ø 14 | FOR ROD Ø 16 | | |
|-------------------------|-------------------------------|-----|----|
| ITEM DESCRIPTION | | | |
| PG1012-D14M110 | - | 110 | 50 |
| - | PG1012-D16M160 ^{MOQ} | 160 | |

USE WITH CODE: CL-H45S, CL-1040S, CL-1020S.

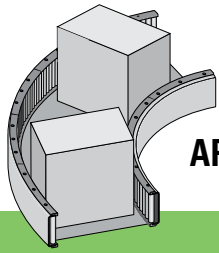
| FOR ROD Ø 12 | | |
|-------------------------|-----|----|
| ITEM DESCRIPTION | | |
| PE9-D12M120 | 120 | 50 |
| PE9-D12M170 | 170 | |

| | | | |
|---------------------------|-----------------------------|-----------------------------------|---------------------|
| Chains & sprockets | Wear strips | Side guide brackets & accessories | Levelers |
| Modular belts & sprockets | Chain & belt return systems | Frame & structure supports | Bearing supports |
| Curves & tracks | Side guide solutions | Miscellaneous products | Related information |

5 2 5 1 0 a

INDEX ROLLER SIDE GUIDES & ROLLER TRANSFER PLATES

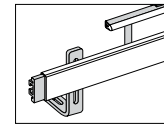
www.SystemPlastSmartGuide.com



APPLICATION STRAIGHT & CURVES

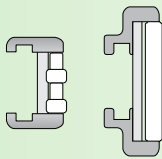
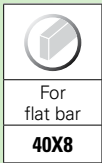
For index side guides, go to:

5 1 5 1 0 a



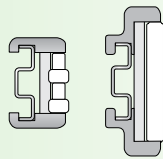
LATERAL

CENTRAL

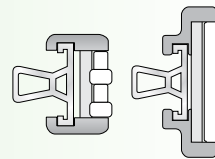


Loose modules

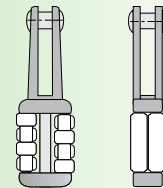
5 2 5 7 0 a



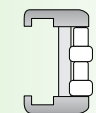
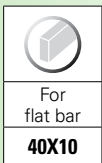
5 2 5 7 1 a



5 2 5 7 2 a

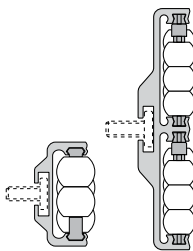


5 2 5 9 2 a



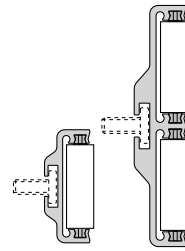
Loose Modules

5 2 5 9 0 a



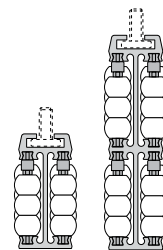
Aluminium **5 2 6 1 1 a**

PVC **5 2 6 1 0 a**



Aluminium **5 2 6 1 3 a**

PVC **5 2 6 1 0 a**



5 2 6 1 2 a

ACCESSORIES

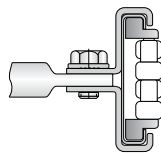
Loose profiles

5 2 6 5 0 a

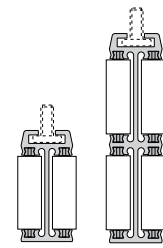


Loose rollers

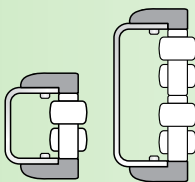
5 2 6 8 0 a



5 2 5 9 4 a

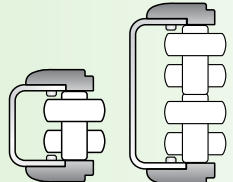


5 2 6 1 4 a

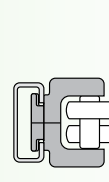


Can only be used straight

5 2 5 2 0 a

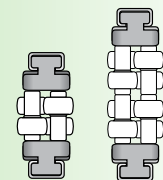


5 2 5 2 1 a



Loose modules

5 2 5 3 0 a



5 2 5 5 0 a



Information about this product is only available on our Smart Guide® website.



ROLLER TRANSFER PLATES



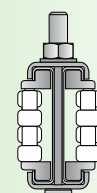
85 & 115 mm

5 2 6 7 0 a



6" & 9"

5 2 6 7 1 a



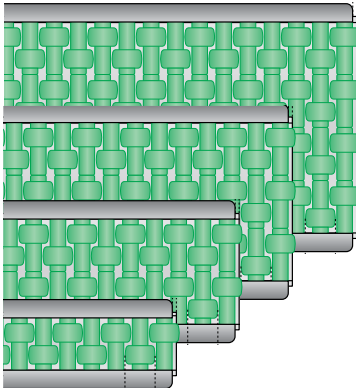
5 2 5 9 4 a

| | | | |
|---------------------------|-----------------------------|-----------------------------------|---------------------|
| Chains & sprockets | Wear strips | Side guide brackets & accessories | Levelers |
| Modular belts & sprockets | Chain & belt return systems | Frame & structure supports | Bearing supports |
| Curves & tracks | Side guide solutions | Miscellaneous products | Related information |

5 2 5 2 0 a

ROLLER SIDE GUIDES FOR STRAIGHT APPLICATIONS

www.SystemPlastSmartGuide.com



Material:

Straps in reinforced polyamide, rollers in acetal resin, screws in stainless steel. Pins and metal profile see the table.

Standard packaging: 2 completely assembled guides.

Applications: designed for rugged boxes and containers.

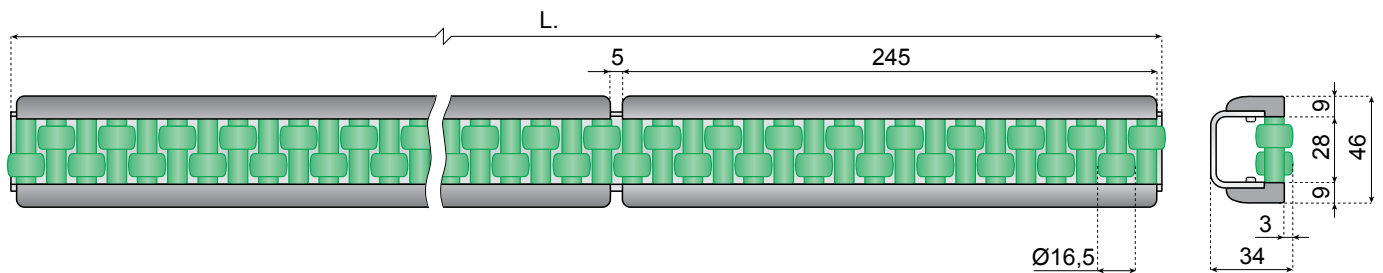
Note: each segment can be pulled out without removing pins and rollers.

Features:

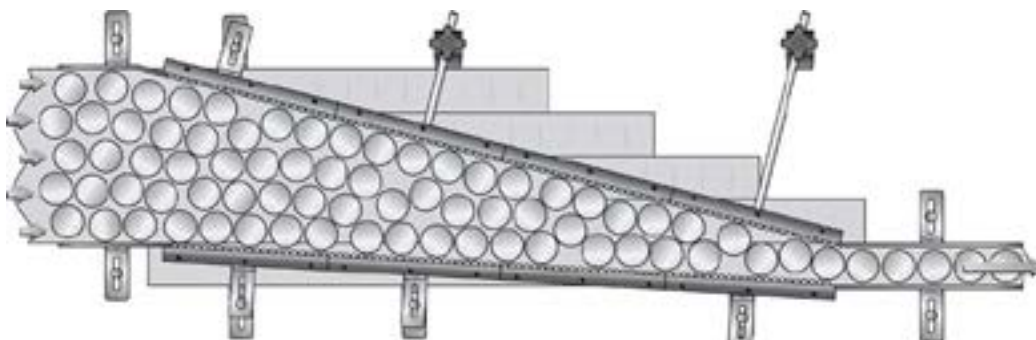
- Low noise rollers.
- Excellent for accumulation areas.
- Long life and smooth operation.
- Easy and quick installation.



Click here for related information.



| HEIGHT | L | PROFILE STAINLESS STEEL | PROFILE ZINC PLATED STEEL | PIN MATERIAL | Kg/m |
|------------------|-----|-----------------------------|---------------------------|------------------|------|
| | | ROLLER GREEN (POM MATERIAL) | | | |
| ITEM DESCRIPTION | | | | | |
| | 1 m | RG-165H46G1000S | RG-165H46G1000G | POM | 2,4 |
| | 2 m | RG-165H46G2000S | RG-165H46G2000G | | |
| | 3 m | RG-165H46G3000S | RG-165H46G3000G | | |
| | 1 m | RG-165H71G1000S | RG-165H71G1000G | POM | 3,5 |
| | 2 m | RG-165H71G2000S | RG-165H71G2000G | | |
| | 3 m | RG-165H71G3000S | RG-165H71G3000G | | |
| | 1 m | RG-165H96G1000S | RG-165H96G1000G | S/S AISI 430F | 5,4 |
| | 2 m | RG-165H96G2000S | RG-165H96G2000G | | |
| | 3 m | RG-165H96G3000S | RG-165H96G3000G | | |
| | 1 m | RG-165H121G1000S | RG-165H121G1000G | S/S AISI 430F | 6,6 |
| | 2 m | RG-165H121G2000S | RG-165H121G2000G | | |
| | 3 m | RG-165H121G3000S | RG-165H121G3000G | | |

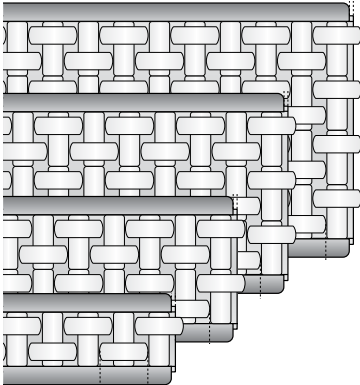


| | | | |
|---------------------------|-----------------------------|-----------------------------------|---------------------|
| Chains & sprockets | Wear strips | Side guide brackets & accessories | Levelers |
| Modular belts & sprockets | Chain & belt return systems | Frame & structure supports | Bearing supports |
| Curves & tracks | Side guide solutions | Miscellaneous products | Related information |

5 2 5 2 1 a

FLEXIBLE ROLLER MODULES FOR STRAIGHT AND CURVED SECTIONS

www.SystemPlastSmartGuide.com



Material:

Straps in reinforced polyamide, rollers in acetal resin, screws in stainless steel. Pins and metal profile see the table.

Standard packaging: 2 completely assembled guides.

Applications: designed for rugged boxes and containers.

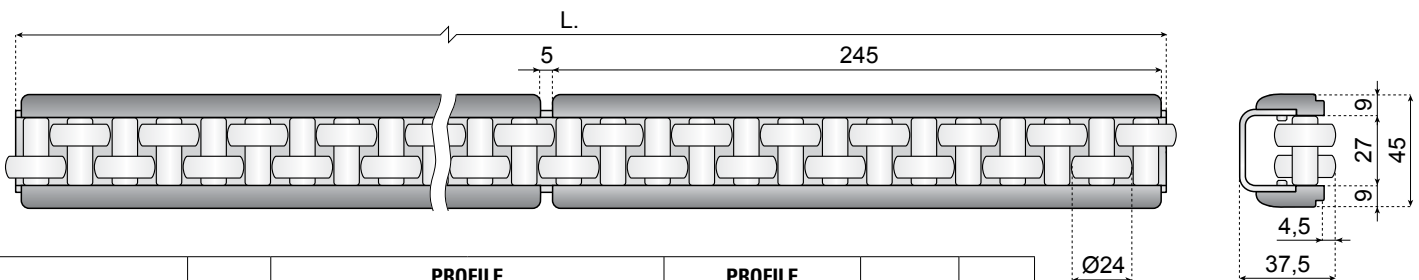
Note: each segment can be pulled out without removing pins and rollers. The design of the side strap provides a position for the clamp without the need for screws or other fixing methods on the conveyors.

Features:

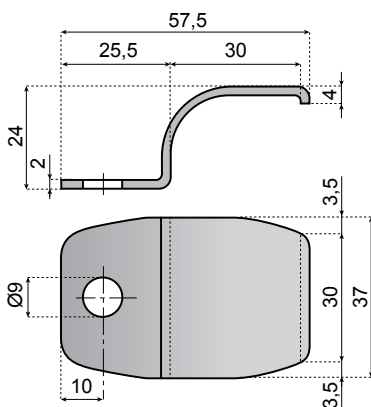
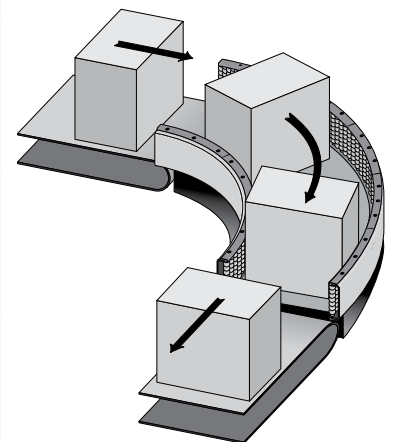
- Low noise rollers.
- Excellent for accumulation areas.
- Long life and smooth operation.
- Easy and quick installation.



Click here for related information.



| HEIGHT | L | PROFILE STAINLESS STEEL | | PROFILE ZINC PLATED STEEL | PIN MATERIAL | Kg/m |
|------------------|-----|-------------------------|-------------------------|---------------------------|------------------|------|
| | | ROLLER WHITE | ROLLER BLACK ANTISTATIC | ROLLER WHITE | | |
| ITEM DESCRIPTION | | | | | | |
| | 1 m | RG-240H45W1000S | RG-240H45SD1000S | RG-240H45W1000G | POM | 2,0 |
| | 2 m | RG-240H45W2000S | RG-240H45SD2000S | RG-240H45W2000G | | |
| | 3 m | RG-240H45W3000S | RG-240H45SD3000S | RG-240H45W3000G | | |
| | 1 m | RG-240H70W1000S | RG-240H70SD1000S | RG-240H70W1000G | POM | 3,1 |
| | 2 m | RG-240H70W2000S | RG-240H70SD2000S | RG-240H70W2000G | | |
| | 3 m | RG-240H70W3000S | RG-240H70SD3000S | RG-240H70W3000G | | |
| | 1 m | RG-240H95W1000S | RG-240H95SD1000S | RG-240H95W1000G | S/S AISI 430F | 5,0 |
| | 2 m | RG-240H95W2000S | RG-240H95SD2000S | RG-240H95W2000G | | |
| | 3 m | RG-240H95W3000S | RG-240H95SD3000S | RG-240H95W3000G | | |
| | 1 m | RG-240H120W1000S | RG-240H120SD1000S | RG-240H120W1000G | S/S AISI 430F | 6,2 |
| | 2 m | RG-240H120W2000S | RG-240H120SD2000S | RG-240H120W2000G | | |
| | 3 m | RG-240H120W3000S | RG-240H120SD3000S | RG-240H120W3000G | | |



CLAMP

| Material | ITEM DESCRIPTION | Icon |
|-------------|------------------|------|
| SS AISI 304 | CL-H45S | n°50 |



| | | | |
|---------------------------|-----------------------------|-----------------------------------|---------------------|
| Chains & sprockets | Wear strips | Side guide brackets & accessories | Levelers |
| Modular belts & sprockets | Chain & belt return systems | Frame & structure supports | Bearing supports |
| Curves & tracks | Side guide solutions | Miscellaneous products | Related information |

5 2 5 3 0 a

ROLLER SIDE GUIDES FOR STRAIGHT AND CURVED APPLICATION

www.SystemPlastSmartGuide.com



Material:

Straps in reinforced polyamide, rollers in acetal resin. Pins and metal profile see the table.

Supply: single module L. 76 mm.

Standard packaging: 50 modules.

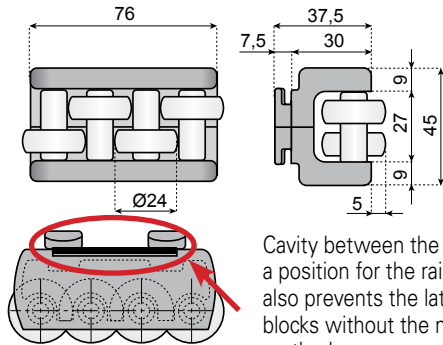
Applications: designed for rugged boxes and containers.

Features:

- Excellent for accumulation areas.
- Easy and quick installation.
- Low noise rollers.
- Long life and smooth operation.



Click here for related information.

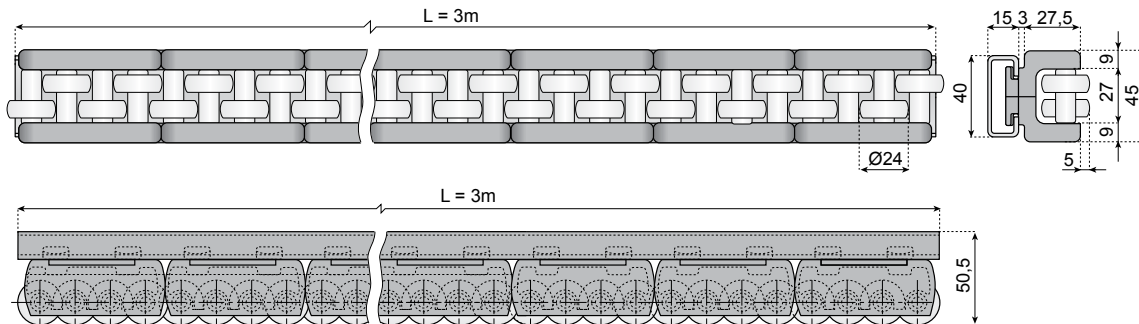


Cavity between the rail and the roller block provides a position for the rail clamp and this design feature also prevents the lateral movement of the roller blocks without the need for screws or other fixing methods.

LOOSE MODULES

| Kg/m | Pin Material | ROLLER WHITE | RADIUS | |
|------|--------------|------------------|-----------|-----------|
| | | ITEM DESCRIPTION | EXTERNAL | INTERNAL |
| 0,15 | POM | RG-240H4545W76 | R min 600 | R min 460 |

Note: roll sections can be quickly assembled by simply sliding into the rail. Once assembled and the rail is located using clamps the sections can not move laterally.



ASSEMBLED GUIDES L = 3M (39 MODULES)

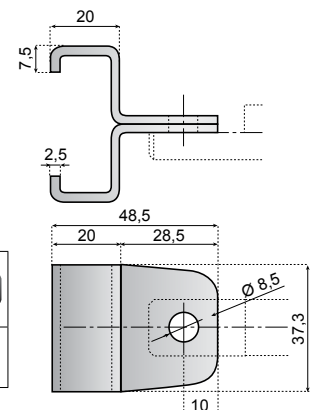
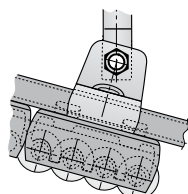
| Kg/m | Pin Material | ROLLER WHITE | RADIUS | |
|------|--------------|-------------------|-----------|-----------|
| | | ITEM DESCRIPTION | EXTERNAL | INTERNAL |
| 2,75 | POM | RG-240H4545W3000S | R min 600 | R min 460 |

Profile: stainless steel

The clamp is designed to fit into the slot in the back of a section as indicated in the sketch below.

BLOCKING:

Clamps fix metal profile and lateral straps, thus avoiding accidental sliding.



CLAMP

| Material | ITEM DESCRIPTION | Quantity |
|-------------|------------------|----------|
| SS AISI 304 | CL-1540S | 50 |

| | | | |
|---------------------------|-----------------------------|-----------------------------------|---------------------|
| Chains & sprockets | Wear strips | Side guide brackets & accessories | Levelers |
| Modular belts & sprockets | Chain & belt return systems | Frame & structure supports | Bearing supports |
| Curves & tracks | Side guide solutions | Miscellaneous products | Related information |

5 2 5 5 0 a

FLEXIBLE ROLLER MODULES FOR STRAIGHT AND CURVED SECTIONS

www.SystemPlastSmartGuide.com

INTERMEDIARY ROLLER MODULES FOR CURVED SECTIONS ONE ROLLER • TWO ROLLERS



Material: straps in reinforced polyamide, rollers in acetal resin, screws in stainless steel. Pins see the table.

Conductive version: straps in reinforced polyamide, rollers and pins in acetal resin.

Supply: supplied as single module L. 85 mm.
Standard packaging: 40 modules.

Applications: designed for rugged boxes and containers.



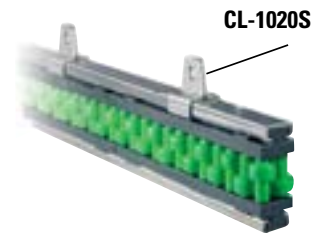
Click here for related information.

Features:

- Low noise rollers.
- Excellent for accumulation areas.
- Long life and smooth operation.
- Easy and quick installation.

**COMPONENTS: N° 12 PINS •
N° 12 ROLLERS • N° 2 STRAPS**

| ONE ROLLER MODULE | Pin Material | ROLLER GREEN | Kg/m |
|-------------------|--------------|------------------|------|
| | | ITEM DESCRIPTION | |
| | POM | RGC30-165H70G85 | 0,14 |
| | POM | RGC30-165H96G85 | 0,17 |



INTERMEDIARY ROLLER GUIDE WITH STEEL PROFILE FOR CURVED SECTIONS ONE ROLLER • TWO ROLLERS

Material: straps in reinforced polyamide, rollers in acetal resin, screws in stainless steel. Pins and metal profile see the table.

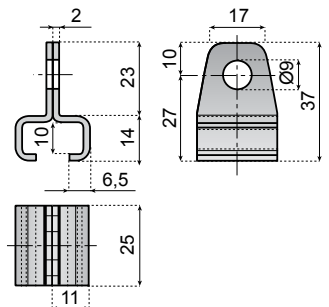
Supply: 3m steel profile with 35 roller modules.

Standard packaging: 5 completely assembled profiles.

Applications: designed for rugged boxes and containers.

ASSEMBLED GUIDES L = 3M STAINLESS STEEL PROFILE

| ONE ROLLER MODULE | Kg/m | L | Pin Material | ROLLER GREEN | |
|-------------------|-------|-----|--------------|-------------------------|---------------------------|
| | | | | PROFILE STAINLESS STEEL | PROFILE ZINC PLATED STEEL |
| ITEM DESCRIPTION | | | | | |
| | 1,9 | 3 m | POM | RGC30-165H70G3000S | RGC30-165H70G3000G |
| | 2,025 | 3m | POM | RGC30-165H96G3000S | RGC30-165H96G3000G |



CLAMP

| Material | ITEM DESCRIPTION |
|-------------|------------------|
| SS AISI 304 | 50 CL-1020S |

| | | | |
|---------------------------|-----------------------------|-----------------------------------|---------------------|
| Chains & sprockets | Wear strips | Side guide brackets & accessories | Levelers |
| Modular belts & sprockets | Chain & belt return systems | Frame & structure supports | Bearing supports |
| Curves & tracks | Side guide solutions | Miscellaneous products | Related information |

5 2 5 7 0 a

ROLLER GUIDES - FLEXIBLE MODULES

FOR STRAIGHT & CURVED GUIDES

www.SystemPlastSmartGuide.com



Click here for related information.



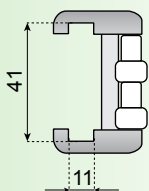
FLEXIBLE MODULES

Material: straps and spacers: reinforced polyamide, rollers and pins: POM-acetal, screws: Stainless steel.

Application: designed for rugged boxes, containers and shrink-wrapped products.

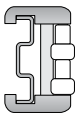
Some versions are also available for 40x10 profile
Go to: www.SystemPlastSmartGuide.com
page code:

5 2 5 9 0 a



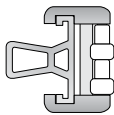
Roller guide modules can also be supplied in lengths of 3M assembled with Stainless Steel or Aluminum profiles.

Go to: www.SystemPlastSmartGuide.com
page code:



Stainless Steel

5 2 5 7 1 a



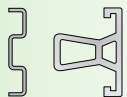
Aluminum

5 2 5 7 2 a

Loose Stainless Steel and Aluminum profiles are available.

Go to: www.SystemPlastSmartGuide.com
page code:

5 2 6 5 0 a



Information about this product is only available on our Smart Guide® website.

| Pin Material | ITEM DESCRIPTION | LENGTH PROFILE mm | EXTERNAL INTERNAL | |
|--------------|--|-------------------|-------------------|-----------|
| | | | EXTERNAL | INTERNAL |
| POM | ROLLER GREEN RG-210H50-840M-G338 | 338 | R min 300 | R min 250 |
| POM | ROLLER WHITE RG-105H49-840M-W348 | 348 | R min 300 | R min 250 |
| | ROLLER GREEN RG-105H49-840M-G348 | | | |
| POM | ROLLER WHITE RG-105H81-840M-W348 | 348 | R min 300 | R min 250 |
| | ROLLER GREEN RG-105H81-840M-G348 | | | |
| POM | ROLLER WHITE RG-86H49-840M-W348 | 348 | R min 300 | R min 250 |
| | ROLLER GREEN RG-86H49-840M-G348 | | | |
| POM | ROLLER WHITE RG-86H81-840M-W348 | 348 | R min 300 | R min 250 |
| | ROLLER GREEN RG-86H81-840M-G348 | | | |

| | | | |
|---------------------------|-----------------------------|-----------------------------------|---------------------|
| Chains & sprockets | Wear strips | Side guide brackets & accessories | Levelers |
| Modular belts & sprockets | Chain & belt return systems | Frame & structure supports | Bearing supports |
| Curves & tracks | Side guide solutions | Miscellaneous products | Related information |

5 2 5 7 1 a

ASSEMBLED ROLLERGUIDES WITH STAINLESS STEEL PROFILE

www.SystemPlastSmartGuide.com

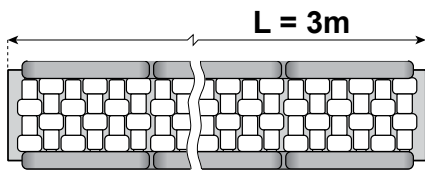


Click here for related information.



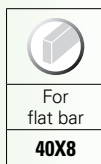
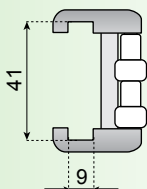
ASSEMBLED ROLLERGUIDES

Material: straps and spacers: reinforced polyamide, rollers and pins: POM-acetal, screws: Stainless steel.
Application: designed for rugged boxes, containers and shrink-wrapped products.

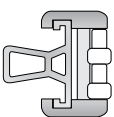


For loose modules go to page code:

5 2 5 7 0 a



Roller guide modules can also be supplied in lengths of 3M assembled with Aluminum profiles.
 Go to: www.SystemPlastSmartGuide.com page code:



Aluminum
5 2 5 7 2 a

| Pin Material | ITEM DESCRIPTION | LENGTH PROFILE mm | R | |
|--------------|--|-------------------|-----------|-----------|
| | | | EXTERNAL | INTERNAL |
| POM | ROLLER GREEN RG-210H50-840M-G3000S | 3000 | R min 300 | R min 250 |
| | | | | |
| POM | ROLLER WHITE RG-105H49-840M-W3000S | 3000 | R min 300 | R min 250 |
| | ROLLER GREEN RG-105H49-840M-G3000S | | | |
| POM | ROLLER WHITE RG-105H81-840M-W3000S | 3000 | R min 300 | R min 250 |
| | ROLLER GREEN RG-105H81-840M-G3000S | | | |
| POM | ROLLER WHITE RG-86H49-840M-W3000S | 3000 | R min 300 | R min 250 |
| | ROLLER GREEN RG-86H49-840M-G3000S | | | |
| POM | ROLLER WHITE RG-86H81-840M-W3000S | 3000 | R min 300 | R min 250 |
| | ROLLER GREEN RG-86H81-840M-G3000S | | | |

| | | | |
|---------------------------|-----------------------------|-----------------------------------|---------------------|
| Chains & sprockets | Wear strips | Side guide brackets & accessories | Levelers |
| Modular belts & sprockets | Chain & belt return systems | Frame & structure supports | Bearing supports |
| Curves & tracks | Side guide solutions | Miscellaneous products | Related information |



Click here for related information.

5 2 5 7 2 a

ASSEMBLED ROLLER GUIDES WITH ALUMINIUM PROFILE

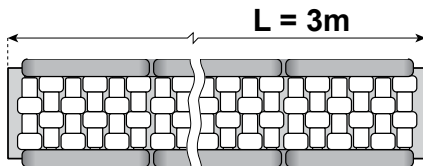
www.SystemPlastSmartGuide.com



ASSEMBLED ROLLERGUIDES

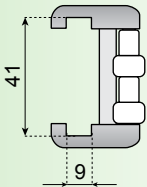
Material: straps and spacers: reinforced polyamide, rollers and pins: POM-acetal, screws: Stainless steel.

Application: designed for rugged boxes, containers and shrink-wrapped products.



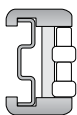
For loose modules go to page code:

5 2 5 7 0 a



Roller guide modules can also be supplied in lengths of 3M assembled with Stainless Steel profiles.

Go to: www.SystemPlastSmartGuide.com page code:



Stainless steel

5 2 5 7 1 a

| Pin Material | ITEM DESCRIPTION | LENGTH PROFILE mm | EXTERNAL INTERNAL | |
|--------------|--|-------------------|-------------------|-----------|
| | | | | |
| POM | ROLLER GREEN RG-210H50-840M-G3000A | 3000 | R min 300 | R min 250 |
| POM | ROLLER WHITE RG-105H49-840M-W3000A | 3000 | R min 300 | R min 250 |
| | ROLLER GREEN RG-105H49-840M-G3000A | | | |
| POM | ROLLER WHITE RG-105H81-840M-W3000A | 3000 | R min 300 | R min 250 |
| | ROLLER GREEN RG-105H81-840M-G3000A | | | |
| POM | ROLLER WHITE RG-86H49-840M-W3000A | 3000 | R min 300 | R min 250 |
| | ROLLER GREEN RG-86H49-840M-G3000A | | | |
| POM | ROLLER WHITE RG-86H81-840M-W3000A | 3000 | R min 300 | R min 250 |
| | ROLLER GREEN RG-86H81-840M-G3000A | | | |

| | | | |
|---------------------------|-----------------------------|-----------------------------------|---------------------|
| Chains & sprockets | Wear strips | Side guide brackets & accessories | Levelers |
| Modular belts & sprockets | Chain & belt return systems | Frame & structure supports | Bearing supports |
| Curves & tracks | Side guide solutions | Miscellaneous products | Related information |

5 2 5 9 0 a

ROLLER GUIDES

www.SystemPlastSmartGuide.com



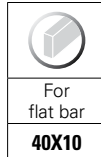
Click here for related information.



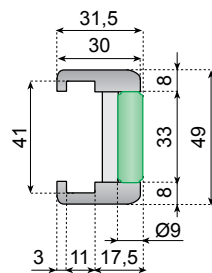
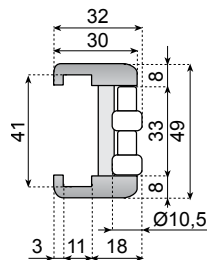
FLEXIBLE MODULES

Material: straps and spacers: reinforced polyamide, rollers and pins: POM-acetal, screws: Stainless steel.

Application: designed for rugged boxes, containers and shrink-wrapped products.

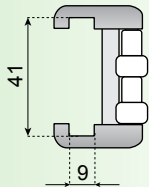


| Pin Material | ITEM DESCRIPTION | LENGTH MODULE mm | EXTERNAL INTERNAL | |
|--------------|---|------------------|-------------------|-----------|
| | | | | |
| POM | ROLLER WHITE RG-105H49-1040M-W348 | 348 | R min 300 | R min 250 |
| | ROLLER GREEN RG-105H49-1040M-G348 | | | |
| POM | ROLLER WHITE RG-86H49-1040M-W348 | 348 | R min 300 | R min 250 |
| | ROLLER GREEN RG-86H49-1040M-G348 | | | |



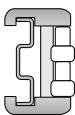
Some versions are also available for 40x8 profile. Go to: www.SystemPlastSmartGuide.com page:

5 2 5 7 0 a



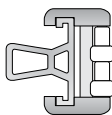
Roller guide modules can also be supplied in lengths of 3M assembled with Stainless Steel or Aluminum profiles.

Go to: www.SystemPlastSmartGuide.com page code:



Stainless steel

5 2 5 7 1 a



Aluminum

5 2 5 7 2 a



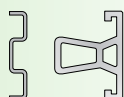
3 0 1 1 0 a

Example: This roller guide is use with the 2120 LBP belt

2120 LBP

Loose Stainless Steel and Aluminum profiles are available. Go to: www.SystemPlastSmartGuide.com page code:

5 2 6 5 0 a



Information about this product is only available on our Smart Guide® website.

| | | | |
|---------------------------|-----------------------------|-----------------------------------|---------------------|
| Chains & sprockets | Wear strips | Side guide brackets & accessories | Levelers |
| Modular belts & sprockets | Chain & belt return systems | Frame & structure supports | Bearing supports |
| Curves & tracks | Side guide solutions | Miscellaneous products | Related information |

5 2 5 9 2 a

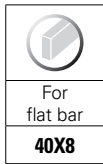
ROLLER GUIDES - FLEXIBLE MODULES

FLEXIBLE INTERMEDIARY ROLLER MODULES 19,5 mm

www.SystemPlastSmartGuide.com



Click here for related information.



FLEXIBLE MODULES

Material: straps and spacers: reinforced polyamide; rollers and pins: in acetal resin, threaded bush in nickel plated brass, screws in stainless steel.

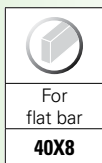
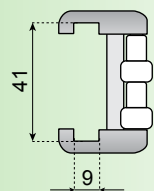
Application: designed for boxes and containers (glass and plastic bottles, tin cans, strong aluminium cans).

Features:

- Improve design
- Smaller rollers and pitch
- Improved performance
- Reduced dimensions
- Low noise rollers
- Excellent for accumulation areas
- Long life and smooth operation
- Easy and quick installation on flat metal profile 40X8

For lateral modules go to page code:

5 2 5 7 0 a

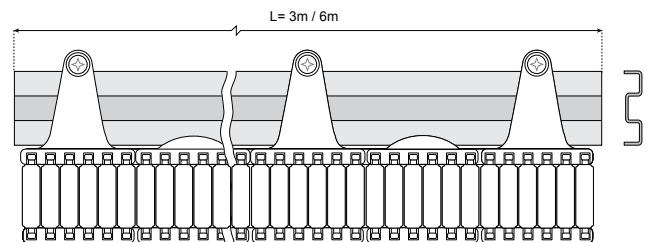


SHOE

| | | |
|--|-------------------------|-----------------|
| | ITEM DESCRIPTION | Material |
| | SHOE-49L26 | PA |



| ITEM DESCRIPTION | LENGTH MODULE mm | EXTERNAL | INTERNAL | Pin Material |
|---|------------------|-----------|-----------|--------------|
| | | | | |
| LOOSE MODULES, L= 290 MM | | | | |
| ROLLER WHITE RGC20-105H49-840M-W290 | 290 | R min 200 | R min 220 | POM |
| | | | | |
| ROLLER WHITE RGC18-86H49-840M-W290 | 290 | R min 300 | R min 250 | POM |
| | | | | |



For M Profile stainless steel VG-S840..., go to page code:
5 2 5 6 0 a

| | | | |
|---------------------------|-----------------------------|-----------------------------------|---------------------|
| Chains & sprockets | Wear strips | Side guide brackets & accessories | Levelers |
| Modular belts & sprockets | Chain & belt return systems | Frame & structure supports | Bearing supports |
| Curves & tracks | Side guide solutions | Miscellaneous products | Related information |

5 2 5 9 3 a

ROLLER GUIDES - FLEXIBLE MODULES

FLEXIBLE INTERMEDIARY ROLLER MODULES 33 mm

www.SystemPlastSmartGuide.com



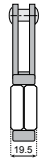
Click here for related information.



| |
|--------------|
| |
| For flat bar |
| 40X8 |

Roller guide modules 19,5 mm, go to:

5 2 5 9 2 a



FLEXIBLE MODULES

Material: straps and spacers: reinforced polyamide; rollers and pins: in acetal resin, threaded bush in nickel plated brass, screws in stainless steel.

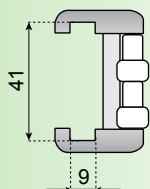
Application: designed for boxes and containers (glass and plastic bottles, tin cans, strong aluminium cans).

Features:

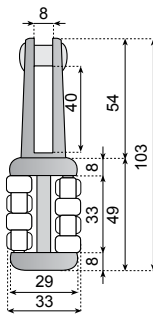
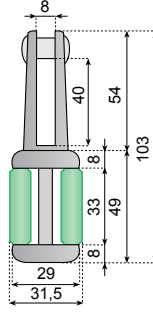
- Improve design
- Smaller rollers and pitch
- Improved performance
- Reduced dimensions
- Low noise rollers
- Excellent for accumulation areas
- Long life and smooth operation
- Easy and quick installation on flat metal profile 40X8

For lateral modules go to page code:

5 2 5 7 0 a



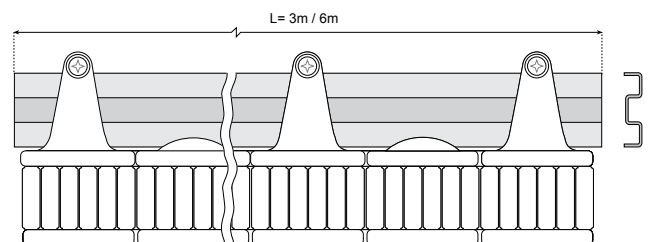
| |
|--------------|
| |
| For flat bar |
| 40X8 |

| ITEM DESCRIPTION | LENGTH MODULE mm | | | Pin Material |
|--|------------------|-----------|-----------|--------------|
| | | EXTERNAL | INTERNAL | |
| LOOSE MODULES, L= 290 mm | | | | |
|  <p>ROLLER WHITE RGC33-105H49-840M-W290</p> | 290 | R min 330 | R min 330 | POM |
| | | | | |
|  <p>ROLLER WHITE RGC32-86H49-840M-W290</p> | 290 | R min 330 | R min 330 | POM |
| | | | | |




SHOE

| | ITEM DESCRIPTION | Material |
|--|-------------------|----------|
| | SHOE-49L42 | PA |



For M Profile stainless steel VG-S840..., go to page code:

5 2 5 6 0 a



| | | | |
|---------------------------|-----------------------------|-----------------------------------|---------------------|
| Chains & sprockets | Wear strips | Side guide brackets & accessories | Levelers |
| Modular belts & sprockets | Chain & belt return systems | Frame & structure supports | Bearing supports |
| Curves & tracks | Side guide solutions | Miscellaneous products | Related information |

5 2 5 9 4 a

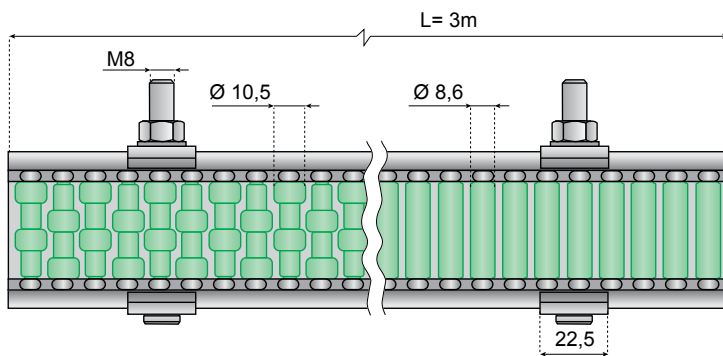
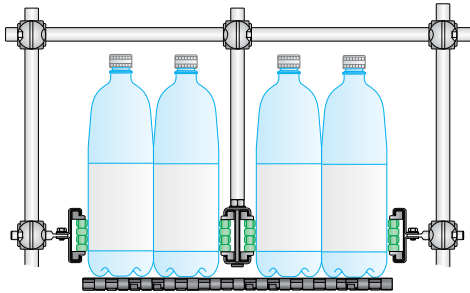
ASSEMBLED ROLLER GUIDES WITH STAINLESS STEEL PROFILE

www.SystemPlastSmartGuide.com

FOR CENTRAL AND LATERAL APPLICATIONS

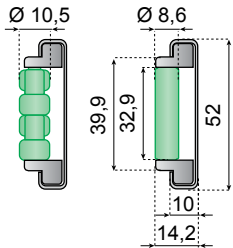
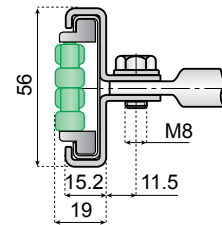
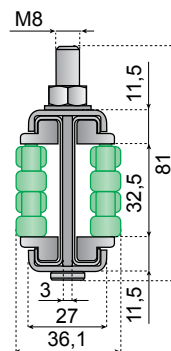


Click here for related information.



Application: central guide

Application: lateral guide



FLEXIBLE ROLLER GUIDES

Material: straps in reinforced polyamide. Rollers & Pins in acetal resin, profile in stainless steel.

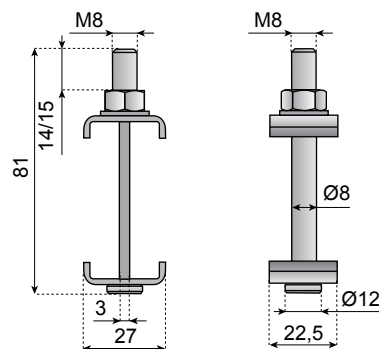
Note: 2 profiles are required to build 1 center guide. Connecting material (clamp CL-H5210C-S-M8) to be ordered separately.

Applications: designed for rugged boxes and multi-packs.



Bending radius: min 750 mm

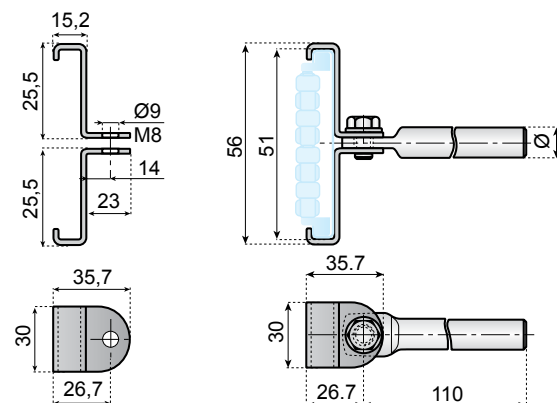
| TYPE | Kg/m | ROLLER WHITE | ROLLER GREEN |
|------|------|------------------------|------------------------|
| | | ITEM DESCRIPTION | |
| | 2,05 | RG-105H52-5210M-W3000S | RG-105H52-5210M-G3000S |
| | | RG-86H52-5210M-W3000S | RG-86H52-5210M-G3000S |



CLAMP FOR CENTER GUIDES

Material: Stainless Steel (AISI 304)

| ITEM DESCRIPTION |
|------------------|
| CL-H5210C-S-M8 |



CLAMP WITH SWIVEL ROD FOR LATERAL GUIDES

Material: Stainless Steel (AISI 304)

| WITHOUT ROD | ROD Ø 12 |
|------------------|------------------|
| ITEM DESCRIPTION | |
| CL-H5210-S | CL-H5210-S12100M |

| | | | |
|---------------------------|-----------------------------|-----------------------------------|---------------------|
| Chains & sprockets | Wear strips | Side guide brackets & accessories | Levelers |
| Modular belts & sprockets | Chain & belt return systems | Frame & structure supports | Bearing supports |
| Curves & tracks | Side guide solutions | Miscellaneous products | Related information |

5 2 6 1 0 a

ROLLER GUIDES - FLEXIBLE MODULES

FOR STRAIGHT & CURVED GUIDES



FLEXIBLE SPEEDRAIL™

Material: profile: PVC, rollers: in acetal resin, screws: stainless steel.

Operating temperature range: -10°F to + 180°F

Features:

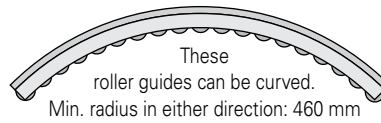
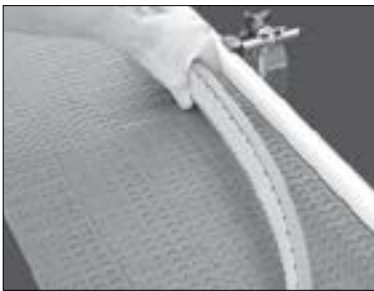
- Bend by hand to create corners or S-curves easily.
- Can be twisted to help invert containers.
- Saves time and labor associated with machine bending.
- Compatible with other Valu Guide components.
- Available with beads or roller.



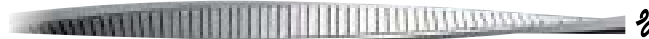
Click here for related information.



Patent N°. 6, 516, 933
7, 147, 098, B2



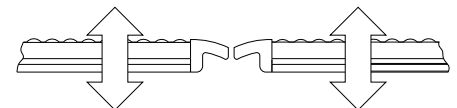
.75M



| FLEXIBLE SPEEDRAIL™ | ITEM DESCRIPTION | LENGTH | STANDARD PACKAGING: | FOR ALUMINIUM VERSION GO TO: |
|---------------------|--------------------------|--------|--|------------------------------|
| | VG-687FLEX-1.4-3M | 3 m | 2 pcs. (6 screws M8, Item description: VG-1568M-02, included with each section) | 5 2 6 1 1 a |
| | VG-688FLEX-1.4-3M | 3 m | 2 pcs. (6 screws M8, Item description: VG-1568M-02, included with each section) | 5 2 6 1 3 a |

Side plow for entry, go to: **5 2 6 1 1 a**

Side plow for adjustment, go to: **5 2 6 1 1 a**



687 SP connecting pins, go to: **5 2 6 1 1 a**

VG-1568M-02 T-head screws M8, go to: **5 2 6 1 1 a**

| | | | |
|---------------------------|-----------------------------|-----------------------------------|---------------------|
| Chains & sprockets | Wear strips | Side guide brackets & accessories | Levelers |
| Modular belts & sprockets | Chain & belt return systems | Frame & structure supports | Bearing supports |
| Curves & tracks | Side guide solutions | Miscellaneous products | Related information |

5 2 6 1 1 a

SPEEDRAIL™ ROLLER GUIDES - LATERAL - BEADS



ALUMINIUM SPEEDRAIL™

Material:

profile: anodized aluminum, rollers: acetal, screws: stainless steel

Features:

- Easy mounting
- Great for polywrapped containers or PET
- Can be curved on site
- Can be cut to desired length without disassembly
- FDA approved engineered polymer



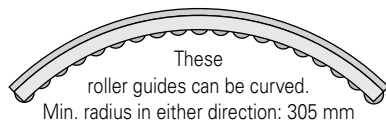
Click here for related information.



Patent N°. 6, 516, 933
6, 991, 086, B2

Also available with flexible PVC go to:

5 2 6 1 0 a



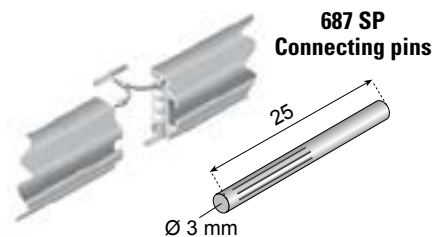
| ALUMINIUM ROLLERGUIDE SPEEDRAIL™ | | |
|----------------------------------|----------------------------|---|
| | ITEM DESCRIPTION | VG-686A-1.25-3M |
| | LENGTH | 3 m |
| | STANDARD PACKAGING: | 2 pcs. (6 screws M8, Item description: VG-1568M-02, included with each section) |
| | ITEM DESCRIPTION | VG-687H-1.4-3M |
| | LENGTH | 3 m |
| | STANDARD PACKAGING: | 2 pcs. (6 screws M8, Item description: VG-1568M-02, included with each section) |

| ALUMINIUM ROLLERGUIDE SPEEDRAIL™ | | |
|----------------------------------|----------------------------|---|
| | ITEM DESCRIPTION | VG-687H-3.3-3M |
| | LENGTH | 3 m |
| | STANDARD PACKAGING: | 2 pcs. (6 screws M8, Item description: VG-1568M-02, included with each section) |

| SIDE PLOW FOR ENTRY | |
|---------------------|--|
| | MATERIAL: Molded POM-acetal SCREW: Stainless steel FEATURES: Optimum guiding of packs |
| | ITEM DESCRIPTION: |
| | SHOE-48L42 |

| SIDE PLOW FOR ENTRY | |
|---------------------|--------------------------|
| | ITEM DESCRIPTION: |
| | SHOE-94L42 |
| | |

| SIDE PLOW FOR ADJUSTMENT | |
|--------------------------|--------------------------|
| | ITEM DESCRIPTION: |
| | SHOE-48L25 |
| | |



| MATERIAL | ITEM DESCRIPTION |
|-----------|------------------|
| SS | VG-687SP |

1568M - T-head screws M8



| MATERIAL | ITEM DESCRIPTION | | |
|-----------|--------------------|----|----|
| SS | VG-1568M-01 | 16 | 10 |
| | VG-1568M-02 | 19 | |
| | VG-1568M-04 | 32 | |

| | | | |
|---------------------------|-----------------------------|-----------------------------------|---------------------|
| Chains & sprockets | Wear strips | Side guide brackets & accessories | Levelers |
| Modular belts & sprockets | Chain & belt return systems | Frame & structure supports | Bearing supports |
| Curves & tracks | Side guide solutions | Miscellaneous products | Related information |

5 2 6 1 2 a

SPEEDRAIL™ ROLLER GUIDES - CENTER - BEADS

www.SystemPlastSmartGuide.com



ALUMINIUM SPEEDRAIL™

Material:
profile: anodized aluminum, rollers: acetal, screws: stainless steel

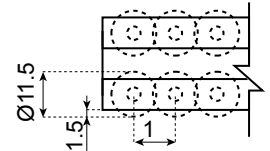
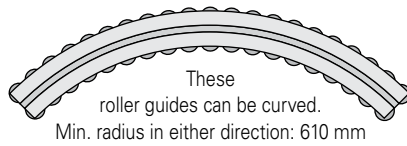
- Features:**
- Easy mounting
 - Great for polywrapped containers or PET
 - Can be curved on site
 - Can be cut to desired length without disassembly
 - FDA approved engineered polymer



Patent N°:
6, 516, 933
6, 991, 086, B2



Click here for related information.

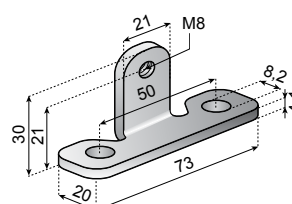


| ALUMINIUM ROLLERGUIDE SPEEDRAIL™ | | | | | | | |
|----------------------------------|---|------------------|---------------|--------|----|---------------------|---|
| | <table border="1"> <tr> <th>ITEM DESCRIPTION</th> <td>VG-687-1.4-3M</td> </tr> <tr> <th>LENGTH</th> <td>3m</td> </tr> <tr> <th>STANDARD PACKAGING:</th> <td>2 pcs. (6 screws M8, Item description: VG-1568M-02, included with each section)</td> </tr> </table> | ITEM DESCRIPTION | VG-687-1.4-3M | LENGTH | 3m | STANDARD PACKAGING: | 2 pcs. (6 screws M8, Item description: VG-1568M-02, included with each section) |
| ITEM DESCRIPTION | VG-687-1.4-3M | | | | | | |
| LENGTH | 3m | | | | | | |
| STANDARD PACKAGING: | 2 pcs. (6 screws M8, Item description: VG-1568M-02, included with each section) | | | | | | |

| ALUMINIUM ROLLERGUIDE SPEEDRAIL™ | | | | | | | |
|----------------------------------|---|------------------|---------------|--------|----|---------------------|---|
| | <table border="1"> <tr> <th>ITEM DESCRIPTION</th> <td>VG-687-3.3-3M</td> </tr> <tr> <th>LENGTH</th> <td>3m</td> </tr> <tr> <th>STANDARD PACKAGING:</th> <td>2 pcs. (6 screws M8, Item description: VG-1568M-02, included with each section)</td> </tr> </table> | ITEM DESCRIPTION | VG-687-3.3-3M | LENGTH | 3m | STANDARD PACKAGING: | 2 pcs. (6 screws M8, Item description: VG-1568M-02, included with each section) |
| ITEM DESCRIPTION | VG-687-3.3-3M | | | | | | |
| LENGTH | 3m | | | | | | |
| STANDARD PACKAGING: | 2 pcs. (6 screws M8, Item description: VG-1568M-02, included with each section) | | | | | | |

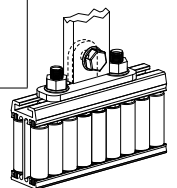
| NOSE PLOW FOR CENTER GUIDES |
|---|
| <p>MATERIAL: NOLU®-S PE SCREW: STAINLESS STEEL</p> <p>ITEM DESCRIPTION: VG-687NP-1.4M</p> |
| |

| NOSE PLOW FOR CENTER GUIDES |
|--|
| <p>HEIGHT: 101mm: TO USE 2 UNITS</p> <p>ITEM DESCRIPTION: VG-687NP-1.4M</p> |
| <p>EXAMPLE:</p> <p>Item description VG-687NP-1.4M</p> <p>Item description VG-687NP-1.4M</p> |
| |



687 LDB Lane divider bracket

| | | |
|-----------------|-----|-------------------------|
| MATERIAL | | ITEM DESCRIPTION |
| | n°2 | VG-687LDB-M8 |



| | | | |
|---------------------------|-----------------------------|-----------------------------------|---------------------|
| Chains & sprockets | Wear strips | Side guide brackets & accessories | Levelers |
| Modular belts & sprockets | Chain & belt return systems | Frame & structure supports | Bearing supports |
| Curves & tracks | Side guide solutions | Miscellaneous products | Related information |

5 2 6 1 3 a

SPEEDRAIL™ ROLLER GUIDES - LATERAL - LONG ROLLERS

www.SystemPlastSmartGuide.com



ALUMINIUM SPEEDRAIL™

Material:

profile: anodized aluminum, rollers: acetal, screws: stainless steel

Features:

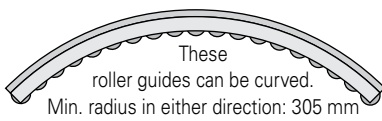
- Easy mounting
- Great for polywrapped containers or PET
- Can be curved on site
- Can be cut to desired length without disassembly
- FDA approved engineered polymer



Patent N°:
6, 516, 933
6, 991, 086, B2



Click here for related information.



| ALUMINIUM ROLLERGUIDE SPEEDRAIL™ | | |
|----------------------------------|---------------------|---|
| | ITEM DESCRIPTION | VG-688H-1.4-3M |
| | LENGTH | 3m |
| | STANDARD PACKAGING: | 2 pcs. (6 screws M8, Item description: VG-1568M-02, included with each section) |

Also available with flexible PVC go to:

5 2 6 1 0 a

| ALUMINIUM ROLLERGUIDE SPEEDRAIL™ | | |
|----------------------------------|---------------------|---|
| | ITEM DESCRIPTION | VG-688H-3.3-3M |
| | LENGTH | 3m |
| | STANDARD PACKAGING: | 2 pcs. (6 screws M8, Item description: VG-1568M-02, included with each section) |

Side plow for entry, go to:
5 2 6 1 1 a

Side plow for adjustment, go to:
5 2 6 1 1 a

Side plow for entry, go to:
5 2 6 1 1 a

687 SP connecting pins, go to:
5 2 6 1 1 a

1568M - T-head screws M8, go to:
5 2 6 1 1 a

| | | | |
|---------------------------|-----------------------------|-----------------------------------|---------------------|
| Chains & sprockets | Wear strips | Side guide brackets & accessories | Levelers |
| Modular belts & sprockets | Chain & belt return systems | Frame & structure supports | Bearing supports |
| Curves & tracks | Side guide solutions | Miscellaneous products | Related information |

5 2 6 1 4 a

SPEEDRAIL™ ROLLER GUIDES - CENTER - LONG ROLLERS

www.SystemPlastSmartGuide.com



ALUMINIUM SPEEDRAIL™

Material:

profile: anodized aluminum, rollers: acetal, screws: stainless steel

Features:

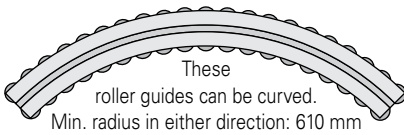
- Easy mounting
- Great for polywrapped containers or PET
- Can be curved on site
- Can be cut to desired length without disassembly
- FDA approved engineered polymer



Patent N°. 6, 516, 933
6, 991, 086, B2



Click here for related information.



| ALUMINIUM ROLLERGUIDE SPEEDRAIL™ | | |
|----------------------------------|----------------------------|---|
| | ITEM DESCRIPTION | VG-688-1.4-3M |
| | LENGTH | 3m |
| | STANDARD PACKAGING: | 2 pcs. (6 screws M8, Item description: VG-1568M-02, included with each section) |

| ALUMINIUM ROLLERGUIDE SPEEDRAIL™ | | |
|----------------------------------|----------------------------|---|
| | ITEM DESCRIPTION | VG-688-3.3-3M |
| | LENGTH | 3m |
| | STANDARD PACKAGING: | 2 pcs. (6 screws M8, Item description: VG-1568M-02, included with each section) |

Nose plow, go to:
5 2 6 1 2 a

Nose plow, for center guides, go to:
5 2 6 1 2 a

687 SP connecting pins, go to:
5 2 6 1 1 a

687 LDB Lane divider bracket, go to:
5 2 6 1 2 a

| | | | |
|---------------------------|-----------------------------|-----------------------------------|---------------------|
| Chains & sprockets | Wear strips | Side guide brackets & accessories | Levelers |
| Modular belts & sprockets | Chain & belt return systems | Frame & structure supports | Bearing supports |
| Curves & tracks | Side guide solutions | Miscellaneous products | Related information |

5 2 6 5 0 a

METAL PROFILES FOR ROLLER GUIDES

www.SystemPlastSmartGuide.com



Click here for related information.

| | Al-a | | |
|--|-------------------------|-----|------|
| | ITEM DESCRIPTION | | |
| | VG-A840M-10 | 3 m | 30 m |
| | VG-A840M-20 | 6 m | 30 m |

For stainless steel material go to:

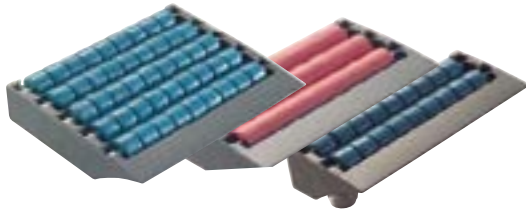
5 0 5 6 0 a

| | | | |
|---------------------------|-----------------------------|-----------------------------------|---------------------|
| Chains & sprockets | Wear strips | Side guide brackets & accessories | Levelers |
| Modular belts & sprockets | Chain & belt return systems | Frame & structure supports | Bearing supports |
| Curves & tracks | Side guide solutions | Miscellaneous products | Related information |

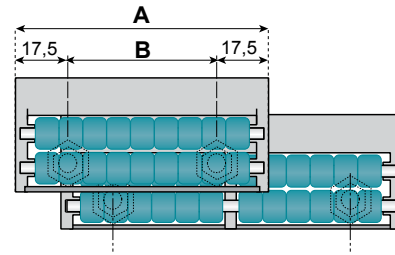
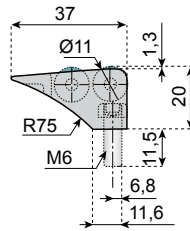
5 2 6 7 0 a

ROLLER TRANSFER PLATES - 85 & 115 mm VERSION

www.SystemPlastSmartGuide.com



VERSION WITH 2 ROLLERS



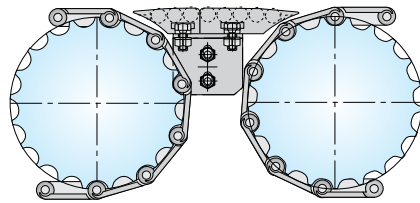
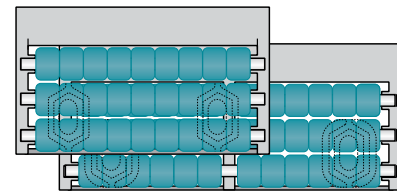
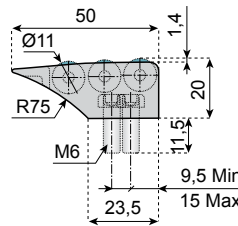
Click here for related information.

Type:

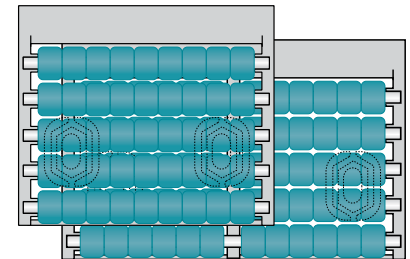
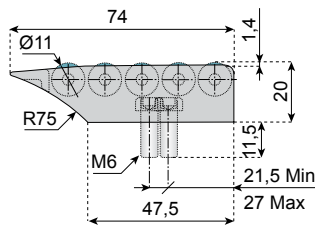
- MR** Multi rollers, suitable for irregular shaped products
- SR** Plastic rollers with noise reducing characteristics
- SSA** Plastic rollers with micro ball bearings for ultra low coefficient of friction

VERSION WITH 3 ROLLERS

B = Center distance of fasteners



VERSION WITH 5 ROLLERS



Material:

Body: Acetal thermoplastic resin

Rollers: Acetal (types MR & SSA), Thermoplastic resin with noise reducing characteristics (type SR)

Pins, hardware and micro ball bearings (SSA only): Stainless steel

| ROLLER TYPE: A=85 - B=50 | | | | | ROLLER TYPE: A=115 - B=80 | | | | | | | | | |
|--------------------------|--|----------------|----------------|-----------------|---------------------------|----------------|-----------------|--|--|--------------|--|--|--|--|
| MR SR SSA | | | | | MR SR SSA | | | | | | | | | |
| WITH 2 ROLLERS | | | | | WITH 2 ROLLERS | | | | | | | | | |
| Fastener M6 | | TME-330R2MR-FM | TME-330R2SR-FM | TME-330R2SSA-FM | TME-450R2MR-FM | TME-450R2SR-FM | TME-450R2SSA-FM | | | | | | | |
| | | TME-330R2MR-BM | TME-330R2SR-BM | TME-330R2SSA-BM | TME-450R2MR-BM | TME-450R2SR-BM | TME-450R2SSA-BM | | | | | | | |
| Nut M6 | | TME-330R2MR-NM | TME-330R2SR-NM | TME-330R2SSA-NM | TME-450R2MR-NM | TME-450R2SR-NM | TME-450R2SSA-NM | | | | | | | |
| WITHOUT SCREWS | | | | | WITHOUT SCREWS | | | | | | | | | |
| TME-330R2MR | | | | | TME-330R2SR | | | | | TME-330R2SSA | | | | |
| TME-450R2MR | | | | | TME-450R2SR | | | | | TME-450R2SSA | | | | |
| WITH 3 ROLLERS | | | | | WITH 3 ROLLERS | | | | | | | | | |
| Fastener M6 | | TME-330R3MR-FM | TME-330R3SR-FM | TME-330R3SSA-FM | TME-450R3MR-FM | TME-450R3SR-FM | TME-450R3SSA-FM | | | | | | | |
| | | TME-330R3MR-BM | TME-330R3SR-BM | TME-330R3SSA-BM | TME-450R3MR-BM | TME-450R3SR-BM | TME-450R3SSA-BM | | | | | | | |
| Nut M6 | | TME-330R3MR-NM | TME-330R3SR-NM | TME-330R3SSA-NM | TME-450R3MR-NM | TME-450R3SR-NM | TME-450R3SSA-NM | | | | | | | |
| WITHOUT SCREWS | | | | | WITHOUT SCREWS | | | | | | | | | |
| TME-330R3MR | | | | | TME-330R3SR | | | | | TME-330R3SSA | | | | |
| TME-450R3MR | | | | | TME-450R3SR | | | | | TME-450R3SSA | | | | |
| WITH 5 ROLLERS | | | | | WITH 5 ROLLERS | | | | | | | | | |
| Fastener M6 | | TME-330R5MR-FM | TME-330R5SR-FM | TME-330R5SSA-FM | TME-450R5MR-FM | TME-450R5SR-FM | TME-450R5SSA-FM | | | | | | | |
| | | TME-330R5MR-BM | TME-330R5SR-BM | TME-330R5SSA-BM | TME-450R5MR-BM | TME-450R5SR-BM | TME-450R5SSA-BM | | | | | | | |
| Nut M6 | | TME-330R5MR-NM | TME-330R5SR-NM | TME-330R5SSA-NM | TME-450R5MR-NM | TME-450R5SR-NM | TME-450R5SSA-NM | | | | | | | |
| WITHOUT SCREWS | | | | | WITHOUT SCREWS | | | | | | | | | |
| TME-330R5MR | | | | | TME-330R5SR | | | | | TME-330R5SSA | | | | |
| TME-450R5MR | | | | | TME-450R5SR | | | | | TME-450R5SSA | | | | |

| | | | |
|---------------------------|-----------------------------|-----------------------------------|---------------------|
| Chains & sprockets | Wear strips | Side guide brackets & accessories | Levelers |
| Modular belts & sprockets | Chain & belt return systems | Frame & structure supports | Bearing supports |
| Curves & tracks | Side guide solutions | Miscellaneous products | Related information |

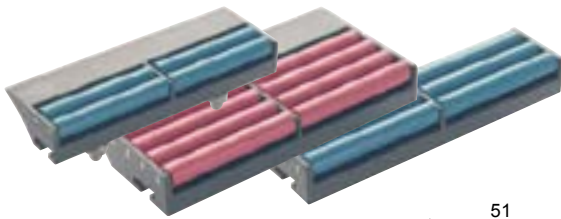
5 2 6 7 1 a

ROLLER TRANSFER PLATES - 6" & 9" VERSION

www.SystemPlastSmartGuide.com



Click here for related information.

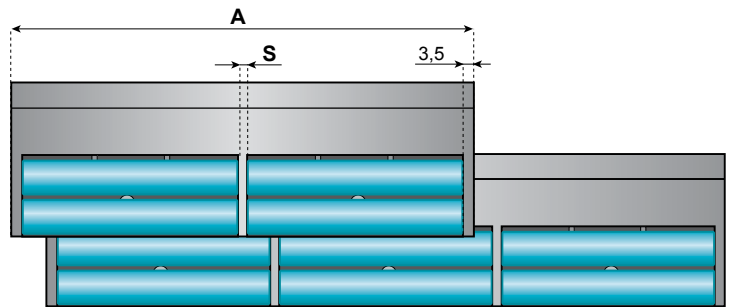
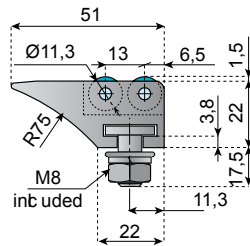


Type:

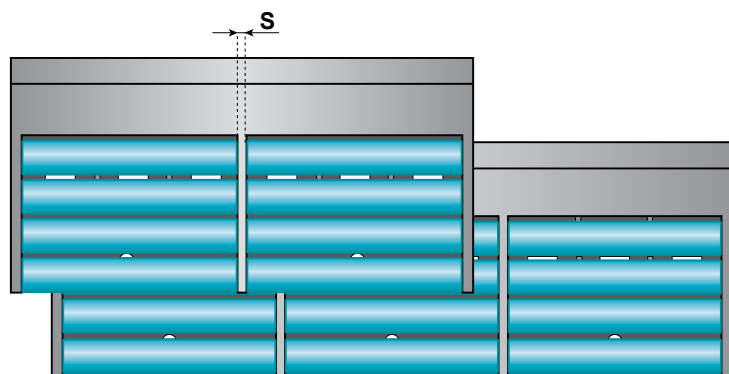
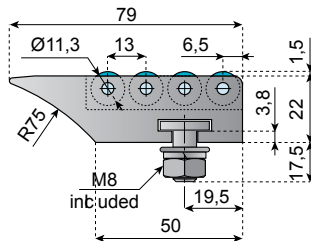
SR Plastic rollers with noise reducing characteristics

SSA Plastic rollers with micro ball bearings for ultra low coefficient of friction

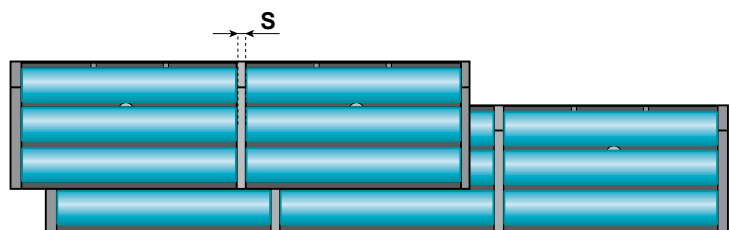
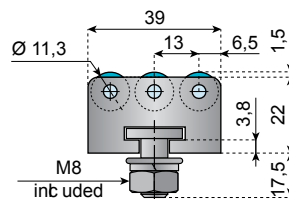
VERSION WITH 2 ROLLERS



VERSION WITH 4 ROLLERS



INTERMEDIATE ROLLER MODULE



Material:

Body: Acetal thermoplastic resin

Rollers: Acetal (type SSA), Thermoplastic resin with noise reducing characteristics (type SR)

Pins, hardware and micro ball bearings (SSA only): Stainless steel



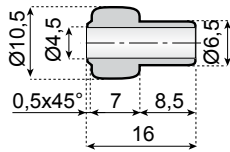
| | | 6" VERSION | | 9" VERSION | |
|-------------|--|--------------------------|------------------|----------------------------|------------------|
| | | Roller type: A=154 - S=3 | | Roller type: A=225 - S=1.5 | |
| | | | | | |
| | | WITH 2 ROLLERS | | WITH 2 ROLLERS | |
| Fastener M8 | | TME-K600R2SR-FM | TME-K600R2SSA-FM | TME-K900R2SR-FM | TME-K900R2SSA-FM |
| | | WITH 4 ROLLERS | | WITH 4 ROLLERS | |
| Fastener M8 | | TME-K600R4SR-FM | TME-K600R4SSA-FM | TME-K900R4SR-FM | TME-K900R4SSA-FM |
| | | WITH 3 ROLLERS | | WITH 3 ROLLERS | |
| Fastener M8 | | TMC-K600R3SR-FM | TMC-K600R3SSA-FM | TMC-K900R3SR-FM | TMC-K900R3SSA-FM |

| | | | |
|---------------------------|-----------------------------|-----------------------------------|---------------------|
| Chains & sprockets | Wear strips | Side guide brackets & accessories | Levelers |
| Modular belts & sprockets | Chain & belt return systems | Frame & structure supports | Bearing supports |
| Curves & tracks | Side guide solutions | Miscellaneous products | Related information |

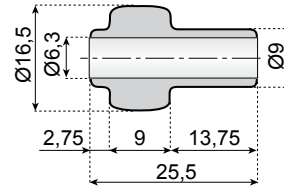
5 2 6 8 0 a

ACCESSORIES FOR ROLLER GUIDES

www.SystemPlastSmartGuide.com

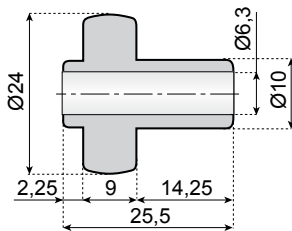


| Material | ROLLER WHITE | ROLLER GREEN | |
|----------|------------------|-----------------|-----|
| | ITEM DESCRIPTION | | |
| POM | RF-11B4ML16-PMW | RF-11B4ML16-PMG | 100 |

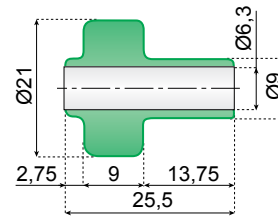


| Material | ROLLER WHITE | ROLLER GREEN | |
|----------|------------------|-----------------|-----|
| | ITEM DESCRIPTION | | |
| POM | RF-17B6ML26-PMW | RF-17B6ML26-PMG | 100 |

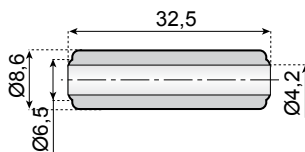
MOQ Min. order quantity: 2500 pcs.



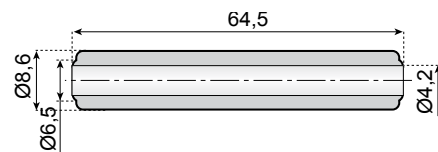
| Material | ROLLER WHITE | ROLLER GREEN | |
|----------|------------------|------------------|-----|
| | ITEM DESCRIPTION | | |
| POM | RF-24B6ML26-PMW | RF-24B6ML26-PMGD | 100 |



| Material | ROLLER GREEN | | |
|----------|------------------|--|-----|
| | ITEM DESCRIPTION | | |
| POM | RF-21B6ML26-PMG | | 100 |



| Material | ROLLER WHITE | ROLLER GREEN | |
|----------|------------------|---------------|-----|
| | ITEM DESCRIPTION | | |
| POM | R-9B4ML33-PMW | R-9B4ML33-PMG | 100 |



| Material | ROLLER WHITE | ROLLER GREEN | |
|----------|------------------|---------------|-----|
| | ITEM DESCRIPTION | | |
| POM | R-9B4ML65-PMW | R-9B4ML65-PMG | 100 |

| | | | |
|---------------------------|-----------------------------|-----------------------------------|---------------------|
| Chains & sprockets | Wear strips | Side guide brackets & accessories | Levelers |
| Modular belts & sprockets | Chain & belt return systems | Frame & structure supports | Bearing Supports |
| Curves & tracks | Side guide solutions | Miscellaneous products | Related information |

| Item description | Page code | Item description | Page code | Item description | Page code | Item description | Page code |
|------------------|-----------|------------------|-----------|------------------|-----------|------------------|-----------|
| 1400..D | 11590a | 820..DS | 11200a | BKR-69W31LP.. | 53525b | CL-RD10-PD.. | 51650a |
| 1400..R | 11590a | 820..RM | 11200b | BKR-69W31LS.. | 53525a | CL-RD12-P. | 51640a |
| 1400V..R | 11600a | 820..RMS | 11200b | BKR-69W44P. | 53545a | CL-RD12-P258M | 51650a |
| 1700..D | 11550a | 820..RS | 11200b | BKR-69W44S.. | 53545a | CL-RD12-PD.. | 51650a |
| 1700..DMS | 11550a | 820..W | 11050a | BKR-70W43P.. | 53535b | CL-RD14-P. | 51640a |
| 1700..R | 11550a | 820..W-HDL | 11040c | BKR-72W43P.. | 53535a | CL-RD14-P258M | 51650a |
| 1700..RB | 11560a | 820..WL | 11050a | BKR-72W43S.. | 53535a | CL-RD20-P. | 51640a |
| 1700..RC | 11560a | 820..WM | 11050b | BKR-75W43LP.. | 53535b | CL-RD8-P. | 51640a |
| 1700..RM | 11550a | 820..WMS | 11050b | BKR-77W43P.. | 53535a | CL-RD8-P258M | 51650a |
| 1700..RMS | 11550a | 820..WS | 11050a | BKR-77W43S.. | 53535a | CL-RD8-PD.. | 51650a |
| 1874.. | 11140a | 821..D | 11320b | BKR-84W31LP. | 53525b | CL-RD8-PF | 51650a |
| 1874.. | 11450a | 821..R | 11320b | BKR-85W44P. | 53545b | CON.. | 50600a |
| 2080..DM | 30027a | 821..W | 11320b | BKR-87W31LP.. | 53525b | CON-H7816M-S | 51690a |
| 2080..DMS | 30027a | 821..WMS | 11320b | BKR-88W43P.. | 53535b | CON-H8716M-S | 51700a |
| 2120.. | 30160a | 878..D | 11270a | BKR-93W43LP.. | 53535b | CRBFTRS.. | 56044a |
| 2120..DS-PK2 | 30160c | 878..RB | 11270a | BKZ-154-SS | 53580a | CRBFTRS.. | 56074a |
| 2122.. | 30166a | 878..RC | 11270a | BPS-4020.. | 54040a | CS.. | 56100a |
| 2123..DMS | 30065a | 880..DM | 11260c | BUSH-R200.. | 54040a | CSHOE.. | 50600a |
| 2123..RMS | 30065a | 880..DMS | 11260a | CAP-10M.. | 53605a | DS-25M52 | 54520a |
| 2124.. | 30165a | 880..DS | 11260a | CAP-25M.. | 54530a | DS-30M52 | 54520a |
| 2190.. | 30235a | 880..RM | 11260c | CAP-30M.. | 54530a | DTS.. | 53600a |
| 2250.. | 30395a | 880..RMS | 11260a | CAP7023-P-YT | 56300b | F-100.. | 51090a |
| 2251.. | 30550a | 880..RS | 11260a | CAP7023-B30M.. | 56300b | F-26.. | 51090a |
| 2253RT..DS | 30395d | 880T..W | 11260d | CAP8437-P-YT | 56300b | F-50.. | 51090a |
| 2256.. | 30740a | 880T..WMS | 11260d | CAP-8437-B40M.. | 56300b | F-60.. | 51090a |
| 2260.. | 30715a | 881..DMS | 11090a | CAP-50M.. | 54530a | F-70.. | 51090a |
| 2260..DS-PK2 | 30715b | 881..DS | 11090a | CC-16.. | 53610a | F-90.. | 51090a |
| 2351.. | 30760a | 881..RMS | 11090a | CC-19-12MK-12MK | 53620a | FT-HDL.. | 54560a |
| 2500.. | 30615a | 881..RS | 11090a | CC-20.. | 53620a | FT-LOCK.. | 54570a |
| 2508.. | 30640a | 881T..W | 11090b | CC-25-12MK.. | 53620a | FT-MAG.. | 54570a |
| 2630.. | 30650a | 881T..WMS | 11090b | CC-25-14M.. | 53615a | GLSHOE-S330 | 50600b |
| 500.. | 56300b | 882..DMS | 11300a | CC-25-15M.. | 53615a | GNP.. | 56300a |
| 515..DMS | 11130a | 882..DS | 11300a | CC-25-16M.. | 53615a | GP.. | 54540a |
| 515..RMS | 11130a | 882..RMS | 11300a | CC-25-18M.. | 53615a | GRINGK.. | 11090d |
| 600..RM | 11580a | 882..RS | 11300a | CC-25-20M.. | 53615a | GRP..EPDM | 11440b |
| 800..DMS | 11120a | 882T..W | 11300b | CC-42-12MK.. | 53620a | GRP..NBR | 11440a |
| 800..DMS-F | 11120b | BCK.. | 50600a | CC-42-12MQ.. | 53630a | GRPK..NBR | 11440a |
| 800..DMS-FSS | 11120b | BEC-19 | 56044a | CC-52-R.. | 53650a | GRPN..NBR | 11430a |
| 800..RMS | 11120a | BEC-24 | 56074a | CC-52-S.. | 53645a | GRSHOE-S330 | 50600b |
| 800..WMS | 11120b | BEO-19 | 56044a | CJ.. | 54520a | HDL-117.. | 54560a |
| 800..FSS | 11120b | BEO-24 | 56074a | CL.. | 56090a | HDL-120.. | 54560a |
| 814..DMS | 11150b | BK-47W44.. | 53545b | CL-1020S | 52550a | HDL-94.. | 54560a |
| 814..RMS | 11150b | BK-49W31L | 53525b | CL-1540S | 52530a | HNG.. | 54550a |
| 815..D | 11040a | BK-50W43 | 53535b | CL-6065X38 | 50600a | HUB110.. | 11270a |
| 815..DMS | 11040b | BK-55W43L | 53535b | CL-CON-P.. | 51600a | IND-142B.. | 53635a |
| 815..DMS-F | 11090d | BKE-85W22.. | 53555a | CL-CON-P25.. | 51630a | IND-350R.. | 53635a |
| 815..DS | 11040a | BKF-35W31L.. | 53555a | CL-CON-PD.. | 51610a | KMD01.. | 50050a |
| 815..DS-K2 | 11040c | BKF-61W38.. | 53560a | CL-CON-R | 51820a | KMD02.. | 50050a |
| 815..FSS | 11090d | BKF-65W30L.. | 53555a | CL-D.. | 51660a | KMD03.. | 50020a |
| 815..RMS | 11040b | BKF-66W31L.. | 53515a | CL-H45S | 52521a | KMD04.. | 50050a |
| 8157..DMS | 11100a | BKF-66W31L.. | 53515b | CL-H5210.. | 52594a | KMD05.. | 50030a |
| 8157..DMS-F | 11100b | BKF-79W30.. | 53555a | CL-H7816M.. | 51690a | KMD06.. | 50020a |
| 8157..FSS | 11100b | BKF-89W38.. | 53560a | CL-H8716M.. | 51700a | KMD07.. | 50020a |
| 820..D | 11200a | BKL..SS | 53580a | CL-H9014M.. | 51680a | KMD08.. | 50020a |
| 820..DM | 11200b | BKR-67W44P. | 53545b | CL-RD10-P. | 51640a | KMD09.. | 50020a |
| 820..DMS | 11200a | BKR-69W31LP.. | 53525a | CL-RD10-P258M | 51650a | KMD10.. | 50020a |

Legend

Codes ending with .. indicate a group of item descriptions all starting with the code listed. Example: 2122.. (all item descriptions starting with 2122).
 Codes with .. in the middle indicate a group of item descriptions starting and ending with the codes listed. Example 2251..RS (all item descriptions starting with 2251 and ending with RS). **Information about item descriptions, printed in blue, is only available on our website: www.SystemPlastSmartGuide.com**

| | | | |
|---------------------------|-----------------------------|-----------------------------------|---------------------|
| Chains & sprockets | Wear strips | Side guide brackets & accessories | Levelers |
| Modular belts & sprockets | Chain & belt return systems | Frame & structure supports | Bearing Supports |
| Curves & tracks | Side guide solutions | Miscellaneous products | Related information |

| Item description | Page code | Item description | Page code | Item description | Page code | Item description | Page code |
|------------------|-----------|------------------|-----------|--------------------|-----------|--------------------|-----------|
| KMD11.. | 50030a | LA110.. | 55600a | LFB2253FT.. | 30330a | LFG2251FT-PT.VG-3 | 30490d |
| KMD12.. | 50030a | LA120E-02B.. | 55645a | LFB2253RT.. | 30397a | LFG2251FT-PT.VGS | 30495d |
| KMD21.. | 50040a | LA123H-02B.. | 55645a | LFB2256.. | 30730a | LFG2251FT-PT.VGS-2 | 30495d |
| KMD22.. | 50040a | LA40.. | 55525a | LFB2256..VG | 30735a | LFG2251FT-PT.VGS-3 | 30495d |
| KMD23.. | 50040a | LA50.. | 55540a | LFG1700 | 11530a | LFG2251FT-TAB.. | 30710a |
| KMD24.. | 50080a | LA60.. | 55555a | LFG1702 | 11530a | LFG2251LBP.. | 30500a |
| KMD25.. | 50080a | LA60-01.. | 55630a | LFG1710.. | 11540a | LFG2252PT.. | 30481a |
| KMD26.. | 50080a | LA60H-01.. | 55630a | LFG1710-CTAB.. | 11540a | LFG2253FT.. | 30330a |
| KMD27.. | 50080a | LA60S-01.. | 55630a | LFG2120FG.. | 30070a | LFG2260FT-M.. | 30700a |
| KMD28.. | 50080a | LA80.. | 55570a | LFG2120FT.. | 30050a | LFG2351.. | 30745a |
| KMD31.. | 50040a | LA80H.. | 55570a | LFG2120FT-PT.. | 30060b | LFG2351..VG | 30755a |
| KMD32.. | 50040a | LA80S.. | 55780a | LFG2120FT-PT..VG-2 | 30100d | LFG2451TAB.. | 30750a |
| KMD33.. | 50040a | LAF100SH-01.. | 55630a | LFG2120FT-PT..VG-3 | 30100d | LFG2508FTS.. | 30620a |
| KMD37.. | 50040a | LAF123H.. | 55840a | LFG2120FT-PT2.. | 30060b | LFG2551.. | 30745a |
| KMD39.. | 50060a | LAF123H-02B.. | 55660a | LFG2123FG.. | 30065a | LFG2630FTS.. | 30645a |
| KMD40.. | 50060a | LAS100.. | 55615a | LFG2250FG.. | 30360a | LFG2651TAB.. | 30750a |
| KMD41.. | 50060a | LAS120.. | 55615a | LFG2250FG-M.. | 30700a | LFG-COMB2500.. | 30615a |
| KMD42.. | 50060a | LAS80.. | 55615a | LFG2250FG-PT.. | 30360c | LFM30.. | 55750a |
| KMD48.. | 50060a | LAX100.. | 55810a | LFG2250FG-PT2.. | 30360c | LFM40.. | 55750a |
| KMD52.. | 50060a | LAX102.. | 55795a | LFG2250FT.. | 30325a | LFM50.. | 55750a |
| KMD61.. | 50050a | LAX123.. | 55840a | LFG2250FT..VG | 30370a | LFW1400.. | 11590a |
| KMD62.. | 50050a | LAX123-02B.. | 55660a | LFG2250FT..VG-2 | 30370b | LFW1400.. | 11600a |
| KMD64.. | 50101a | LB100 | 55735a | LFG2250FT..VG-3 | 30370b | LFW1431.. | 11590a |
| KMD66.. | 50101a | LB150 | 55735a | LFG2250FT..VGS | 30380a | LFW1700 | 11530a |
| KMD68.. | 50070a | LB200 | 55735a | LFG2250FT..VGS-2 | 30380b | LFW1701-TAB | 11530a |
| KMD71.. | 50070a | LB80 | 55735a | LFG2250FT..VGS-3 | 30380b | LFW1702 | 11530a |
| KMD78.. | 50070a | LF1700 | 11530a | LFG2250FT-K330 | 30310a | LFW1710.. | 11540a |
| KMD82.. | 50070a | LF1701-TAB | 11530a | LFG2250FT-P.VGS | 30380c | LFW1710-CTAB.. | 11540a |
| KMD84.. | 50101a | LF1702 | 11530a | LFG2250FT-P.VGS-2 | 30380c | LFW600.. | 11570a |
| KMD85.. | 50101a | LF1843 SS TAB.. | 11470a | LFG2250FT-P.VGS-3 | 30380c | LFW600F | 11580a |
| KMD86.. | 50101a | LF1843 TAB.. | 11470a | LFG2250FT-PT.. | 30335b | LFW631 TAB | 11580a |
| KMD87.. | 50101a | LF820.. | 11190a | LFG2250FT-PT..VG | 30370d | LMM120.. | 55720a |
| KMD90.. | 50091a | LF820P.. | 11190a | LFG2250FT-PT..VG-2 | 30370d | LMM80.. | 55720a |
| KMD91.. | 50091a | LF821.. | 11320a | LFG2250FT-PT..VG-3 | 30370d | LMP125.. | 55705a |
| KMD92.. | 50091a | LF8257.. | 11310a | LFG2250FT-PT.VGS | 30380d | LMP80.. | 55705a |
| KMD93.. | 50091a | LF828.. | 11210a | LFG2250FT-PT.VGS-2 | 30380d | LMPH123.. | 55735a |
| KMD96.. | 50091a | LF831.. | 11190a | LFG2250FT-PT.VGS-3 | 30380d | LSHOE-S330 | 50600b |
| KMD97.. | 50101a | LF843.. | 11460a | LFG2250FT-PT2.. | 30335b | LSS100.. | 55675a |
| KNF-30H21.. | 54610a | LF845.. | 11460a | LFG2250FT-PT-K330 | 30310a | LSS125.. | 55675a |
| KNF-40H26.. | 54610a | LF877TAB.. | 11230a | LFG2250FT-TAB.. | 30710a | LSS50.. | 55675a |
| KNF-50H32.. | 54610a | LF878TAB.. | 11230a | LFG2251FT.. | 30440a | LSS75.. | 55675a |
| KNF-50H39.. | 54600a | LF879.. | 11240a | LFG2251FT.VG | 30490a | LSSC100.. | 55690a |
| KNF-50H40.. | 54600a | LF879P.. | 11240b | LFG2251FT.VG-2 | 30490b | LSSC125.. | 55690a |
| KNF-50H41.. | 54600a | LF879M.. | 11220a | LFG2251FT.VG-3 | 30490b | LSSC75.. | 55690a |
| KNF-50H56.. | 54600a | LF879TAB.. | 11230a | LFG2251FT.VGS | 30495a | SNB2080.. | 30029a |
| KNF-53H45.. | 54600a | LF880.. | 11240a | LFG2251FT.VGS-2 | 30495b | NB2120.. | 30175a |
| KNF-80H51.. | 54600a | LF8800P.. | 11240b | LFG2251FT.VGS-3 | 30495b | SNB2120.. | 30175a |
| KNM-20H13.. | 54610a | LF880M.. | 11220a | LFG2251FT-M.. | 30700a | NGD1873TAB..VG | 11420a |
| KNM-25H16.. | 54610a | LF880TAB.. | 11230a | LFG2251FT-P.VG | 30490c | NGE1400.. | 11590a |
| KNM-30H21.. | 54610a | LF882M.. | 11280a | LFG2251FT-P.VG-2 | 30490c | NGE1431.. | 11590a |
| KNM-40H26.. | 54610a | LF882TAB.. | 11290a | LFG2251FT-P.VG-3 | 30490c | NGE1700 | 11530a |
| KNM-50H32.. | 54610a | LFB2080FT.. | 30025a | LFG2251FT-P.VGS | 30495c | NGE1701-TAB | 11530a |
| KNM-50H40.. | 54600a | LFB2120FG.. | 30070a | LFG2251FT-P.VGS-2 | 30495c | NGE1702 | 11530a |
| LA100.. | 55585a | LFB2120FT.. | 30050a | LFG2251FT-P.VGS-3 | 30495c | NGE1863 TAB.. | 11490a |
| LA100.. | 55825a | LFB2250FG.. | 30360a | LFG2251FT-PT.VG | 30490d | NGE1863SS TAB.. | 11490a |
| LA100-SH.. | 55810a | LFB2250FT.. | 30325a | LFG2251FT-PT..VG-2 | 30490d | NGE1873SS TAB.. | 11470a |

Legend

Codes ending with .. indicate a group of item descriptions all starting with the code listed. Example: 2122.. (all item descriptions starting with 2122).
 Codes with .. in the middle indicate a group of item descriptions starting and ending with the codes listed. Example 2251..RS (all item descriptions starting with 2251 and ending with RS). **Information about item descriptions, printed in blue, is only available on our website: www.SystemPlastSmartGuide.com**

| | | | |
|---------------------------|-----------------------------|-----------------------------------|---------------------|
| Chains & sprockets | Wear strips | Side guide brackets & accessories | Levelers |
| Modular belts & sprockets | Chain & belt return systems | Frame & structure supports | Bearing Supports |
| Curves & tracks | Side guide solutions | Miscellaneous products | Related information |

| Item description | Page code | Item description | Page code | Item description | Page code | Item description | Page code |
|--------------------------|-----------|--------------------|-----------|--------------------|-----------|------------------|-----------|
| NGE1873SS TAB..GS | 11440b | NGE2250FG-PT.T | 30350a | NGE880TAB..VAC43X2 | 11235a | RF-21B6.. | 52680a |
| NGE1873SS TAB..GS.. | 11440a | NGE2250FG-PT2.. | 30360c | NGE882LBP TAB.. | 11360a | RF-24B6.. | 52680a |
| NGE1873SS TAB..VG | 11420a | NGE2250FT.. | 30325a | NGE882LBP.. | 11360a | RF-40..86-PEG | 51080a |
| NGE1873SS TAB..VG85QH8.5 | 11425a | NGE2250FT-K330 | 30310a | NGE882M.. | 11280a | RF-41..B | 51020a |
| NGE1873TAB.. | 11470a | NGE2250FT-P.. | 30335a | NGE882M..VG | 11400a | RF-41..G | 51060a |
| NGE1873TAB..GS | 11440b | NGE2250FT-P2.. | 30335a | NGE882TAB.. | 11290a | RF-47..G | 51030a |
| NGE1873TAB..GS.. | 11440a | NGE2250FT-PT.. | 30335b | NGE882TAB..VG | 11400a | RF-50..28-PEG | 51040a |
| NGE1873TAB..VG | 11420a | NGE2250FT-PT.T | 30320a | NGE-S-K38.. | 11330a | RF-50..43-PEG | 51050a |
| NGE2080FT.. | 30025a | NGE2250FT-PT2.. | 30335b | PAB-COMB2500.. | 30615a | RF-50..86-PEG | 51080a |
| NGE2120FG.. | 30070a | NGE2250FT-PT-K330 | 30310a | PC-125110.. | 53640a | RF-50..B | 51030a |
| NGE2120FG-P.. | 30075a | NGE2250FT-PT-K330T | 30320a | PC-25.. | 53610a | RF-60..43-PEG | 51050a |
| NGE2120FG-P2.. | 30075a | NGE2250FT-TAB.. | 30710a | PC-25T.. | 54530a | RF-60..86-PEG | 51080a |
| NGE2120FG-PT.. | 30075b | NGE2251FT.. | 30440a | PC-30T.. | 54530a | RF-60..G | 51030a |
| NGE2120FG-PT2.. | 30075b | NGE2251FT-K330 | 30420a | PC-9075.. | 53635a | RG-105H.. | 52570a |
| NGE2120FT.. | 30030a | NGE2251FT-M.. | 30700a | PC-KIT | 53640a | RG-105H49..3000A | 52572a |
| NGE2120FT.. | 30050a | NGE2251FT-PT.. | 30450b | PC-KIT-0M | 53605a | RG-105H49..3000S | 52571a |
| NGE2120FT..GB | 30120a | NGE2251FT-PT.T | 30430a | PC-KIT-19M | 53605a | RG-105H49..348 | 52590a |
| NGE2120FT..GB-2 | 30120b | NGE2251FT-PT.TL | 30430a | PCO-H7816M-B | 51690a | RG-105H52..3000S | 52594a |
| NGE2120FT..GB-3 | 30120b | NGE2251FT-PT-K330 | 30420a | PCO-H8716M-B | 51700a | RG-105H81..3000A | 52572a |
| NGE2120FT..VG50 | 30100a | NGE2251FT-TAB.. | 30710a | PCO-H9014M-G | 51680a | RG-105H81..3000S | 52571a |
| NGE2120FT..VG50-2 | 30100b | NGE2251LBP.. | 30500a | P-D.. | 51830a | RG-165.. | 52520a |
| NGE2120FT..VG50-3 | 30100b | NGE2251LBP-P.. | 30500b | PE.. | 51830a | RG-210H50.. | 52570a |
| NGE2120FT..VGS50 | 30105a | NGE2252FT.. | 30445a | PEN-H7816M-B | 51690a | RG-210H50..3000A | 52572a |
| NGE2120FT-P.. | 30060a | NGE2252FT.. | 30420a | PEN-H8716M-B | 51700a | RG-210H50..3000S | 52571a |
| NGE2120FT-P..VG50 | 30100c | NGE2252FT-PT.. | 30420a | PEN-H9014M-G | 51680a | RG-240.. | 52521a |
| NGE2120FT-P2.. | 30060a | NGE2253FT..VAC43 | 30397n | PF.. | 51830a | RG-240H45..3000S | 52530a |
| NGE2120FT-PT.. | 30030b | NGE2260FT-M.. | 30700a | PG.. | 51830a | RG-86H.. | 52570a |
| NGE2120FT-PT.. | 30060b | NGE600.. | 11570a | PK-D12M110 | 51830a | RG-86H49..3000A | 52572a |
| NGE2120FT-PT..T | 30045a | NGE820.. | 11190a | PM10.. | 51830a | RG-86H49..3000S | 52571a |
| NGE2120FT-PT..VG50 | 30100d | NGE820P.. | 11190a | PMB.. | 54530a | RG-86H49..348 | 52590a |
| NGE2120FT-PT2.. | 30060b | NGE821.. | 11320a | PP1873SS TAB..GS.. | 11440b | RG-86H81..3000A | 52572a |
| NGE2120LBP.. | 30110a | NGE821..VG | 11410a | PP878TAB..GS.. | 11430b | RG-86H81..3000S | 52571a |
| NGE2120M.. | 30720a | NGE821LBP.. | 11370a | PPG2500RR.. | 30610a | RG-86H81..3000S | 52571a |
| NGE2120RF.. | 30108a | NGE8257.. | 11310a | R-26..B | 51020a | RGC.. | 52550a |
| NGE2121FT.. | 30030a | NGE8257..VG | 11410a | R-26..G | 51060a | RGC18-86H49.. | 52592a |
| NGE2121FT.. | 30055a | NGE8257LBP.. | 11370a | R-40..83-PEB-S | 51110a | RGC20-105H49.. | 52592a |
| NGE2121FT-PT.. | 30030b | NGE828.. | 11210a | R-40..83-PEG | 51080a | RGC32-86H49.. | 52593a |
| NGE2122FG.. | 30073a | NGE831.. | 11190a | R-40..85-PEG | 51080a | RGC33-105H49.. | 52593a |
| NGE2124FT.. | 30030a | NGE831..VG | 11380a | R-41..B | 51020a | RH-45.. | 54620a |
| NGE2124FT..VG | 30090a | NGE831LBP.. | 11340a | R-41..G | 51060a | RH-65.. | 54620a |
| NGE2124FT-PT.. | 30030b | NGE863.. | 11460a | R-49..G | 51040a | RH-80.. | 54620a |
| NGE2124FT-PT..VG | 30090a | NGE878LBP.. | 11350a | R-50..27-PEG | 51040a | RPAD10004 | 55810a |
| NGE2190FG.. | 30230a | NGE878TAB..GS.. | 11430b | R-50..41-PEG | 51050a | RPAD10108 | 55600a |
| NGE2190FG.. | 30220a | NGE878TAB..GS.. | 11430a | R-50..43-PEG | 51050a | RPAD11207 | 55615a |
| NGE2190FG-PT.. | 30220a | NGE878TAB..VG | 11390a | R-50..83-PEB-S | 51110a | RPAD11207 | 55645a |
| NGE2190FT.. | 30210a | NGE879.. | 11240a | R-50..83-PEG | 51080a | RPAD12208 | 55660a |
| NGE2190FT.. | 30200a | NGE879LBP TAB.. | 11350a | R-50..85-PEB-S | 51110a | RPAD12208 | 55645a |
| NGE2190FT-PT.. | 30200a | NGE879M.. | 11220a | R-50..85-PEG | 51080a | RPAD12208 | 55840a |
| NGE2190FT-PT..T | 30215a | NGE879M..VG | 11380a | R-60..41-PEG | 51050a | RPAD12506 | 55705a |
| NGE2250FG.. | 30360a | NGE879TAB.. | 11230a | R-60..83-PEB-S | 51110a | RPAD12506 | 55720a |
| NGE2250FG-K330 | 30340a | NGE879TAB..VG | 11390a | R-60..83-PEG | 51080a | RPAD3206 | 55525a |
| NGE2250FG-M.. | 30700a | NGE880.. | 11240a | R-60..85-PEB-S | 51110a | RPAD4206 | 55540a |
| NGE2250FG-P.. | 30360b | NGE8800.. | 11240b | R-60..85-PEG | 51080a | RPAD5207 | 55630a |
| NGE2250FG-P2.. | 30360b | NGE8800P.. | 11240b | R-9B4.. | 52680a | RPAD5306 | 55555a |
| NGE2250FG-P-K330 | 30340a | NGE880M.. | 11220a | RF-11B4.. | 52680a | RPAD7207 | 55615a |
| NGE2250FG-PT.. | 30360c | NGE880TAB.. | 11230a | RF-17B6.. | 52680a | RPAD7207 | 55570a |

Legend

Codes ending with .. indicate a group of item descriptions all starting with the code listed. Example: 2122.. (all item descriptions starting with 2122).
 Codes with .. in the middle indicate a group of item descriptions starting and ending with the codes listed. Example 2251..RS (all item descriptions starting with 2251 and ending with RS). **Information about item descriptions, printed in blue, is only available on our website: www.SystemPlastSmartGuide.com**

| | | | |
|---------------------------|-----------------------------|-----------------------------------|---------------------|
| Chains & sprockets | Wear strips | Side guide brackets & accessories | Levelers |
| Modular belts & sprockets | Chain & belt return systems | Frame & structure supports | Bearing Supports |
| Curves & tracks | Side guide solutions | Miscellaneous products | Related information |

| Item description | Page code | Item description | Page code | Item description | Page code | Item description | Page code |
|------------------|-----------|------------------|-----------|------------------|-----------|-------------------|-----------|
| RPAD8006 | 55705a | SPT-10.. | 51160a | TE-R.. | 55765a | TTM97.. | 50101a |
| RPAD8006 | 55720a | SPT-11L.. | 51130a | TE-S.. | 55765a | TTMK.. | 50565a |
| RPAD9308 | 55585a | SPT-15.. | 51150a | TME.. | 52670a | TUBE-R10S-6000 | 53605a |
| RPAD9308 | 55795a | SPT-16.. | 51160a | TME-K.. | 52671a | TWP-S4030.. | 55765c |
| RPAD9308 | 55615a | SPT-2.. | 51130a | TOP-20P | 53585a | UC.. | 56300a |
| RPAD9308 | 55825a | SPT-4.. | 51130a | TOP-23P.. | 53585a | UCFB.. | 56140a |
| RR-47..83-PEB-S | 51110a | SPT-4.. | 51160a | TOP-23S.. | 53585a | UCFG.. | 56080a |
| RR-47..83-PEG | 51080a | SPT-84.. | 51120a | TOP-24P.. | 53585a | UCFH.. | 56020a |
| RR-47..85-PEB-S | 51110a | SPT-84.. | 51160a | TOP-24S.. | 53585a | UCFH.. | 56030a |
| RR-47..85-PEG | 51080a | SQL.. | 56130a | TOP-25S.. | 53585a | UCFH.. | 56042a |
| RR-57..27-PEG | 51040a | SR800.. | 11030b | TOP-40P.. | 53585a | UCFH..ME.. | 56040a |
| RR-57..41-PEG | 51050a | SS802.. | 11120a | TOP-40S.. | 53585a | UCFHXX.. | 56042a |
| RR-57..43-PEG | 51050a | SS812.. | 11030a | TOP-60S.. | 53585a | UCFL.. | 56020a |
| RR-57..83-PEB-S | 51110a | SS881M.. | 11060a | TOP-90S.. | 53585a | UCFL..ME.. | 56040a |
| RR-57..83-PEG | 51080a | SS881MO.. | 11060a | TTM01.. | 50050a | UFLX.. | 56020a |
| RR-57..85-PEB-S | 51110a | SSA805.. | 11030b | TTM02.. | 50050a | UFLQ.. | 56072a |
| RR-57..85-PEG | 51080a | SSA815.. | 11030b | TTM03.. | 50020a | UFLZ..ME.. | 56040a |
| RR-67..41-PEG | 51050a | SSA8810.. | 11080a | TTM04.. | 50050a | VG-009M-01 | 51630a |
| RR-67..83-PEB-S | 51110a | SSA8810TAB.. | 11070a | TTM05.. | 50030a | VG-011.. | 51620a |
| RR-67..83-PEG | 51080a | SSE515.. | 11130a | TTM06.. | 50020a | VG-012-01 | 51620a |
| RR-67..85-PEB-S | 51110a | SSE805.. | 11120a | TTM07.. | 50020a | VG-013.. | 51620a |
| RR-67..85-PEG | 51080a | SSE805..VG | 11180a | TTM08.. | 50020a | VG-016-02 | 51630a |
| RRF-40..86-PEG | 51080a | SSE815.. | 11030a | TTM09.. | 50020a | VG-018M.. | 51630a |
| RRF-50..86-PEG | 51080a | SSE8157.. | 11100a | TTM10.. | 50020a | VG-022-01 | 51630a |
| RRF-57..28-PEG | 51040a | SSE8157..VG | 11180a | TTM11.. | 50030a | VG-113SM-08G | 51820a |
| RRF-57..43-PEG | 51050a | SSE8157TAB..VG | 11180a | TTM12.. | 50030a | VG-1568M.. | 52611a |
| RRF-60..86-PEG | 51080a | SSE8810.. | 11080a | TTM21.. | 50040a | VG-213.. | 53565a |
| RRF-67..43-PEG | 51050a | SSE881..VG | 11170a | TTM22.. | 50040a | VG-213R-TOP.. | 53590a |
| RSHOE-S330 | 50600b | SSE881M.. | 11060a | TTM23.. | 50040a | VG-222JQ.. | 51810a |
| S800.. | 11030b | SSE881MO.. | 11060a | TTM31.. | 50040a | VG-223R.. | 53565a |
| S815.. | 11030b | SSE881MO.. | 11160a | TTM32.. | 50040a | VG-223R-TOP.. | 53590a |
| SCREW21M5-SS | 30615a | SSE8810.. | 11080a | TTM33.. | 50040a | VG-245.. | 53575a |
| SF-CD1.. | 54540a | SSE8810TAB.. | 11070a | TTM37 | 50040a | VG-253.. | 53570a |
| SF-SPS.. | 54540a | SS8810TAB.. | 11070a | TTM39.. | 50060a | VG-254.. | 53570a |
| SHOE-15L105.. | 51150a | SSE881RTAB.. | 11070a | TTM40.. | 50060a | VG-3050.. | 54020a |
| SHOE-48.. | 52611a | SSE881TAB..VG | 11170a | TTM41.. | 50060a | VG-3051.. | 54050a |
| SHOE-49L26 | 52592a | SSE8857M.. | 11110a | TTM42.. | 50060a | VG-3052.. | 54050a |
| SHOE-49L42 | 52593a | SSE8857M..VG | 11160a | TTM48.. | 50060a | VG-3055.. | 54050a |
| SHOE-53L102.. | 51140a | SSE8857TAB.. | 11110a | TTM52.. | 50060a | VG-3070.. | 54060a |
| SHOE-84L244.. | 51170a | SSEL815.. | 11020a | TTM61.. | 50050a | VG-3080.. | 54060a |
| SHOE-84L68.. | 51160a | SSEL815.. | 11030a | TTM62.. | 50050a | VG-3087.. | 54060a |
| SHOE-85L244.. | 51170a | SSEL881MO.. | 11060a | TTM64.. | 50101a | VG-3110.. | 54070a |
| SHOE-88L244.. | 51170a | SSER814..VG | 11150a | TTM66.. | 50101a | VG-3115.. | 54070a |
| SHOE-89L152.. | 51170a | SSER815..VG | 11150a | TTM68.. | 50070a | VG-60.. | 53615a |
| SHOE-94.. | 52611a | SSER815TAB..VG | 11150a | TTM71.. | 50070a | VG-619.. | 53610a |
| SK38..DMS | 11330a | SSL812.. | 11030a | TTM78.. | 50070a | VG-620.. | 53615a |
| SK38..RMS | 11330a | SSL881MO.. | 11060a | TTM82.. | 50070a | VG-632.. | 54560a |
| SMB-60.. | 53625a | SSSR815.. | 11030a | TTM84.. | 50101a | VG-633.. | 54550a |
| SP-10049.. | 53535a | TC-20.. | 53610a | TTM85.. | 50101a | VG-634.. | 54550a |
| SP-10944T15 | 53545a | TC-60.. | 53625a | TTM86.. | 50101a | VG-641T.. | 53590a |
| SP-11253T15 | 53545a | TCHD-R150-R150-S | 54080a | TTM87.. | 50101a | VG-686A-1.25-3M | 52611a |
| SP-7550.. | 53515a | TC-R150-S | 54080a | TTM90.. | 50091a | VG-687-1.4-3M | 52612a |
| SP-R36T.. | 53535a | TEE.. | 51140a | TTM91.. | 50091a | VG-687-3.3-3M | 52612a |
| SPSL815.. | 11020a | TEE-3815-BM10 | 54080a | TTM92.. | 50091a | VG-687FLEX-1.4-3M | 52610a |
| SPSL881MO.. | 11060a | TEE-4415-BM10 | 54080a | TTM93.. | 50091a | VG-687H-1.4-3M | 52611a |
| | | TEE-4815-BM10 | 54080a | TTM96.. | 50091a | VG-687H-3.3-3M | 52611a |

Legend

Codes ending with .. indicate a group of item descriptions all starting with the code listed. Example: 2122.. (all item descriptions starting with 2122).
 Codes with .. in the middle indicate a group of item descriptions starting and ending with the codes listed. Example 2251..RS (all item descriptions starting with 2251 and ending with RS). **Information about item descriptions, printed in blue, is only available on our website: www.SystemPlastSmartGuide.com**

| | | | |
|---------------------------|-----------------------------|-----------------------------------|---------------------|
| Chains & sprockets | Wear strips | Side guide brackets & accessories | Levelers |
| Modular belts & sprockets | Chain & belt return systems | Frame & structure supports | Bearing Supports |
| Curves & tracks | Side guide solutions | Miscellaneous products | Related information |

| Item description | Page code | Item description | Page code | Item description | Page code | Item description | Page code |
|-------------------|-----------|------------------|-----------|------------------|-----------|------------------|-----------|
| VG-687LDB-M8 | 52612a | VG-LSSM.. | 51520a | VG-S4P330C.. | 50580b | | |
| VG-687NP-1.4M | 52612a | VG-LSSMT.. | 51520c | VG-S4-S3020.. | 50550a | | |
| VG-687SP | 52611a | VG-LSSR.. | 51520a | VG-S640M.. | 50560a | | |
| VG-688-1.4-3M | 52614a | VG-LSST.. | 51520b | VG-S840M.. | 50560a | | |
| VG-688-3.3-3M | 52614a | VG-LSST.. | 51520a | VG-SC.. | 54630a | | |
| VG-688FLEX-1.4-3M | 52610a | VG-LSST.. | 51520c | VG-SCL.. | 54630a | | |
| VG-688H-1.4-3M | 52613a | VG-LSSWF.. | 51520a | VG-SD.. | 51660a | | |
| VG-688H-3.3-3M | 52613a | VG-LSSWF.. | 51520b | VG-SP1040M.. | 50560a | | |
| VG-750-10 | 50550b | VG-MBG-50-NS-10 | 50570a | VG-SP330C.. | 50580b | | |
| VG-A2520.. | 51740b | VG-NG110.. | 51720a | VG-SP640M.. | 50560a | | |
| VG-A330M.. | 50580a | VG-NG125.. | 51720a | VG-SP840M.. | 50560a | | |
| VG-A600A.. | 51740a | VG-NG47.. | 51720a | VG-SSF-HT-10 | 51520a | | |
| VG-A840.. | 52650a | VG-NG49.. | 51720a | VG-SSMT.. | 51520c | | |
| VG-ABG.. | 51730a | VG-NG50.. | 51720a | VG-SSNG.. | 51520c | | |
| VG-AP330C.. | 50580b | VG-NG81.. | 51720a | VG-SSTS.. | 51520b | | |
| VG-BP.. | 54030a | VG-NG91.. | 51720a | VG-T425M.. | 50550b | | |
| VG-BPT.. | 54030b | VG-P1040M.. | 50560a | VG-TP.. | 54030a | | |
| VG-BPV.. | 54030b | VG-P105.. | 50650a | VG-U3041.. | 50550a | | |
| VG-BWS-125-10 | 50570a | VG-P10MRD.. | 51710a | VG-U3042.. | 50550a | | |
| VG-DB83M-B-10 | 51710a | VG-P12MRD.. | 51710a | VG-U3043.. | 50550a | | |
| VG-F203M.. | 50550b | VG-P14BC.. | 50650a | VG-U4045.. | 50550a | | |
| VG-F205M.. | 50550b | VG-P14HD.. | 50650b | VG-J23.. | 50520a | | |
| VG-F205M.. | 51120a | VG-P18BC.. | 50650a | VG-Z18M. | 50520a | | |
| VG-F206M.. | 51120a | VG-P18CC-100 | 50530a | VG-Z20M.. | 50520a | | |
| VG-F253M.. | 50550b | VG-P18HD.. | 50650b | VG-Z20WM.. | 50520a | | |
| VG-F303M.. | 50550b | VG-P2520.. | 51740b | VG-Z21.. | 50520a | | |
| VG-F403.. | 50550a | VG-P316BC.. | 50650a | VT1701T.. | 50170a | | |
| VG-F403M.. | 50550b | VG-P316HD.. | 50650b | VT1710CT.. | 50170a | | |
| VG-F503M.. | 50550b | VG-P330C.. | 50580a | VT1713CT.. | 50180a | | |
| VG-F603M.. | 50550b | VG-P330CW.. | 50610a | VT1873T.. | 50160a | | |
| VG-F703M.. | 50550b | VG-P330M.. | 50560a | VT880B.. | 50130a | | |
| VG-G1020M.. | 51660b | VG-P516BC.. | 50650b | VT880T.. | 50110a | | |
| VG-GD.. | 51660a | VG-P640M.. | 50560a | VT882.. | 50140a | | |
| VG-H7816M.. | 51690a | VG-P650M.. | 50560a | VT882B.. | 50150a | | |
| VG-H8716M.. | 51700a | VG-P680M.. | 50560a | VTC880.. | 50120a | | |
| VG-H9014M.. | 51680a | VG-P7GABC.. | 50650a | VTR880B.. | 50130a | | |
| VG-J100-125T.. | 50530a | VG-P7GAHD.. | 50650b | VTR882B.. | 50150a | | |
| VG-J100-188.. | 50530b | VG-P813.. | 51740a | W1700 | 11530a | | |
| VG-J21M.. | 50520a | VG-P816.. | 51740a | | | | |
| VG-J23M.. | 50520a | VG-P822.. | 51740a | | | | |
| VG-JEL-078.. | 50530a | VG-P834.. | 51740a | | | | |
| VG-JL19M.. | 50520a | VG-P840DBM.. | 51710a | | | | |
| VG-JS100-125.. | 50530a | VG-P840M.. | 50560a | | | | |
| VG-JS100-188.. | 50530b | VG-P8MRD.. | 51710a | | | | |
| VG-JS150-125.. | 50530a | VG-PBG5.. | 51730a | | | | |
| VG-JS150-18.. | 50530b | VG-PBG7.. | 51730a | | | | |
| VG-JS200-125.. | 50530a | VG-PD.. | 51660b | | | | |
| VG-JS200-188.. | 50530b | VG-PM10BC.. | 50650b | | | | |
| VG-JS3-075-125.. | 50530a | VG-PM4BC.. | 50650a | | | | |
| VG-JSL075-125.. | 50530a | VG-Q-75-40.. | 53595a | | | | |
| VG-JSL075-188.. | 50530b | VG-QSC.. | 53595a | | | | |
| VG-L20M.. | 50520a | VG-QT-01 | 53595a | | | | |
| VG-LGSF.. | 51520a | VG-S1020M.. | 51660b | | | | |
| VG-LGSR.. | 51520a | VG-S1040M.. | 50560a | | | | |
| VG-LGST.. | 51520b | VG-S330M.. | 50580a | | | | |
| VG-LSSF.. | 51520a | VG-S4-330M.. | 50580a | | | | |

Legend

Codes ending with .. indicate a group of item descriptions all starting with the code listed. Example: 2122.. (all item descriptions starting with 2122).
 Codes with .. in the middle indicate a group of item descriptions starting and ending with the codes listed. Example 2251..RS (all item descriptions starting with 2251 and ending with RS). **Information about item descriptions, printed in blue, is only available on our website: www.SystemPlastSmartGuide.com**

| | | | |
|---------------------------|-----------------------------|-----------------------------------|---------------------|
| Chains & sprockets | Wear strips | Side guide brackets & accessories | Levelers |
| Modular belts & sprockets | Chain & belt return systems | Frame & structure supports | Bearing Supports |
| Curves & tracks | Side guide solutions | Miscellaneous products | Related information |

1. DEFINITIONS:

In these Terms and Conditions of Sale, "Seller" means System Plast S.r.l.; "Buyer" means the person, firm, company or corporation by whom the order is given; "Goods" means the goods (including any Software and Documentation, as defined in Clause 9) described in Seller's Acknowledgement of Order form; "Services" means the services described in Seller's Acknowledgement of Order Form; "Contract" means the written agreement (including these Terms and Conditions) made between Buyer and Seller for the supply of the Goods and/or provision of Services; "Contract Price" means the price payable to Seller by Buyer for the Goods and/or Services and "Seller Affiliate" means any company which is for the time being directly or indirectly controlled by the ultimate parent company of Seller. For the purposes of this definition, a company is directly controlled by or is a subsidiary of another company or companies which holds 50% or more of the shares carrying the right to vote at a general meeting of the first mentioned company and a particular company is indirectly controlled by another company or companies if a series of companies can be specified, beginning with that company or those companies and ending with the particular company, so related that each company in the series is directly controlled by one or more of the companies earlier in the series.

2. THE CONTRACT:

2.1 All orders must be in writing and are accepted subject to these Terms and Conditions of Sale. No terms or conditions put forward by Buyer and no representations, warranties, guarantees or other statements not contained in Seller's quotation or Acknowledgement of Order nor otherwise expressly agreed in writing by Seller shall be binding on Seller.

2.2 The Contract shall become effective only upon the date of acceptance of Buyer's order on Seller's Acknowledgement of Order form or upon the date of fulfilment of all conditions precedent stipulated in the Contract, whichever is the later (the "Effective Date"). If the details of the Goods or Services described in Seller's quotation differ from those set out in the Acknowledgement of Order Form the latter shall apply.

2.3 No alteration or variation to the Contract shall apply unless agreed in writing by both parties. However, Seller reserves the right to effect minor modifications and/or improvements to the Goods before delivery provided that the performance of the Goods is not adversely affected and that neither the Contract Price nor the delivery date is affected.

3. VALIDITY OF QUOTATION AND PRICES:

3.1 Unless previously withdrawn, Seller's quotation is open for acceptance within the period stated therein or, when no period is so stated, within thirty days after its date.

3.2 Prices are firm for delivery within the period stated in Seller's quotation and are exclusive of (a) Value Added Tax and (b) any similar and other taxes, duties, levies or other like charges arising outside Italy in connection with the performance of the Contract.

3.3 Prices (a) are for Goods delivered EXW (Ex works) Seller's shipping point, exclusive of freight, insurance and handling and (b) unless otherwise stated in the Seller's quotation, are exclusive of packing. If the Goods are to be packed, packing materials are non-returnable.

4. PAYMENT:

Payment shall be made: (a) in full without set-off, counterclaim or withholding of any kind (save where and to the extent that this cannot by law be excluded); and (b) in the currency of Seller's quotation within thirty days of date of invoice unless otherwise specified by Seller's Finance Department. Goods will be invoiced at any time after their readiness for despatch has been notified to Buyer. Services will be invoiced monthly in arrears or, if earlier, upon completion. Without prejudice to Seller's other rights, Seller reserves the right to: (i) charge interest on any overdue sums at Unicredit Banca d'Impresa S.p.A. Brescia, Italy (or such higher rate stipulated by applicable law) during the period of delay; (ii) suspend performance of the Contract (including withholding shipment) in the event that Buyer fails or in Seller's reasonable opinion it appears that Buyer is likely to fail to make payment when due under the Contract or any other contract; and (iii) at any time require such reasonable security for payment as Seller may deem reasonable.

5. DELIVERY PERIOD:

5.1 Unless otherwise stated in Seller's quotation, all periods stated for delivery or completion run from the Effective Date and are to be treated as estimates only not involving any contractual obligations.

5.2 If Seller is delayed in or prevented from performing any of its obligations under the Contract due to the acts or omissions of Buyer or its agents (including but not limited to failure to provide specifications and/or fully dimensioned working drawings and/or such other information as Seller reasonably requires to proceed expeditiously with its obligations under the Contract), the delivery/completion period and the Contract Price shall both be adjusted accordingly.

5.3 If delivery is delayed due to any act or omission of Buyer, or if having been notified that the Goods are ready for despatch, Buyer fails to take delivery or provide adequate shipping instructions, Seller shall be entitled to place the Goods into a suitable store at Buyer's expense. Upon placing the Goods into the store, delivery shall be deemed to be complete, risk in the Goods shall pass to Buyer and Buyer shall pay Seller accordingly.

6. FORCE MAJEURE:

6.1 The Contract (other than Buyer's obligation to pay all sums due to Seller in accordance with the Contract) shall be suspended, without liability, in the event and to the extent that its performance is prevented or delayed due to any circumstance beyond the reasonable control of the party affected, including but not limited to: Act of God,

war, armed conflict or terrorist attack, riot, fire, explosion, accident, flood, sabotage; governmental decisions or actions (including but not limited to prohibition of exports or re-exports or the failure to grant or the revocation of applicable export licenses), or labour trouble, strike, lockout or injunction. Seller shall have no obligation to supply any hardware, software, services or technology unless and until it has received any necessary licences or authorisations or has qualified for general licences or licence exceptions under applicable import, export control and sanctions laws, regulations, orders and requirements, as they may be amended from time to time (including without limitation those of the United States, the European Union and the jurisdiction in which Seller is established or from which the items are supplied). If for any reason any such licenses, authorisations or approvals are denied or revoked, or if there is a change in any such applicable laws, regulations, orders or requirements that would prohibit Seller from fulfilling the Contract, or would in the reasonable judgement of Seller otherwise expose Seller and/or Seller Affiliate(s) to a risk of liability under applicable laws, regulations, orders or requirements, Seller shall be relieved without liability of all obligations under the Contract.

6.2 If either party is delayed or prevented from performance of its obligations by reason of this Clause for more than 180 consecutive calendar days, either party may terminate the then unperformed portion of the Contract by notice in writing given to the other party, without liability provided that Buyer shall be obliged to pay the reasonable cost and expense of any work in progress and to pay for all Goods delivered and Services performed as at the date of termination. Seller may deliver by instalments and if so each delivery shall constitute a separate contract and failure by Seller to deliver any one or more of the instalments in accordance with their terms shall not entitle Buyer to terminate the whole Contract or treat it as repudiated.

7. INSPECTION, TESTING, AND CALIBRATION:

7.1 Goods will be inspected by Seller or manufacturer and, where practicable, submitted to Seller's or manufacturer's standard tests before despatch. Any additional tests or inspection (including inspection by Buyer or its representative, or tests in the presence of Buyer or its representative and/or calibration) or the supply of test certificates and/or detailed test results shall be subject to Seller's prior written agreement and Seller reserves the right to charge therefore; if Buyer or its representative fails to attend such tests, inspection and/or calibration after seven days' notice that the Goods are ready therefore, the tests, inspection and/or calibration will proceed and shall be deemed to have been made in the presence of Buyer or its representative and the Seller's statement that the Goods have passed such testing and/or inspection and/or have been calibrated shall be conclusive.

7.2 Claims for shortfalls in quantity or for incorrect delivery shall be void if made more than 14 days after delivery.

8. DELIVERY, RISK & TITLE:

8.1 Unless otherwise expressly stated in the Contract, the Goods will be delivered Carriage Paid To (CPT) the destination named in the Contract; freight, packing and handling will be charged at Seller's standard rates. Risk of loss of or damage to the Goods shall pass to Buyer upon delivery as aforesaid and Buyer shall be responsible for insurance of the Goods after risk has so passed. Alternatively, if it is expressly stated in the Contract that Seller is responsible for the insurance of the Goods after their delivery to the carrier, such insurance will be charged at Seller's standard rates. "Ex-works"; "FCA"; "CPT" and any other delivery terms used in the Contract shall be defined in accordance with the latest version of Incoterms.

8.2 Subject to Clause 8.1, title to the Goods shall pass to Buyer upon delivery.

9. DOCUMENTATION AND SOFTWARE:

9.1 Title to and ownership of the copyrights in software and/or firmware incorporated into or provided for use with the Goods ("Software") and documentation supplied with the Goods ("Documentation") shall remain with the relevant Seller Affiliate (or such other party as may have supplied the Software and/or Documentation to Seller) and is not transferred hereby to Buyer.

9.2 Except as otherwise provided herein, Buyer is hereby granted a non-exclusive, royalty-free licence to use the Software and Documentation in conjunction with the Goods, provided that and for so long as the Software and Documentation are not copied (unless expressly authorised by applicable law) and Buyer holds the Software and Documentation in strict confidence and does not disclose them to others, or permit others to have access to them (other than Seller's standard operating and maintenance manuals). Buyer may transfer the foregoing licence to another party which purchases, rents or leases the Goods, provided the other party accepts and agrees in writing to be bound by the conditions of this Clause 9.

9.3 Notwithstanding Sub-clause 9.2, Buyer's use of certain Software, (as specified by Seller and including but not limited to control system and AMS Software) shall be governed exclusively by the applicable Seller Affiliate or third party licence agreement.

9.4 Seller and Seller Affiliates shall retain ownership of all inventions, designs and processes made or evolved by them and save as set out in this Clause 9 no rights in intellectual property are hereby granted.

10. DEFECTS AFTER DELIVERY:

10.1 Seller warrants (i) subject to the other provisions of the Contract, good title to and the unencumbered use of the Goods; (ii) that Goods manufactured by Seller and/or Seller's Affiliates shall conform with Seller's specifications therefore and be free of defects in materials and workmanship and (iii) that Services provided by Seller or Seller Affiliates will be performed with all reasonable skill, care and due diligence and in accordance with good engineering practice. Seller will make good, by repair or at Seller's option by the supply of a replacement part or parts, any defects which, under proper use, care and maintenance, appear in Goods of Seller Affiliates' manufacture and which are reported to Seller within 12 calendar months from putting such Goods

into operation or 18 calendar months after their delivery, whichever period expires the sooner, (90 days after delivery in the case of Consumables and spare parts) (the "Warranty Period") and which arise solely from faulty materials or workmanship: provided always that defective items are returned to Seller at Buyer's cost carriage and insurance prepaid within the Warranty Period. ("Consumables" shall include glass electrodes, membranes, liquid junctions, electrolyte and O-rings). Replaced items shall become the property of the Seller. Repaired or replacement items will be delivered by Seller at Seller's cost to Buyer's mainland site in Italy or, if Buyer is located outside Italy, FCA in Italy. Seller will correct defects in Services provided by Seller or Seller Affiliates and reported to Seller within ninety days after completion of such Services. Goods or Services repaired, replaced or corrected in accordance with this Clause 10.1 shall be subject to the foregoing warranty for the unexpired portion of the Warranty Period or for ninety days from the date of their return to Buyer (or completion of correction in the case of Services), whichever expires the later.

10.2 Goods or Services sourced by Seller from a third party (not being a Seller Affiliate) for resale to Buyer shall carry only the warranty extended by the original manufacturer.

10.3 Notwithstanding Clauses 10.1 and 10.2, Seller shall not be liable for any defects caused by: fair wear and tear; materials or workmanship made, furnished or specified by Buyer; non-compliance with Seller's storage, installation, operation or environmental requirements; lack of proper maintenance; any modification or repair not previously authorised by Seller in writing; nor the use of non-authorized software or spare or replacement parts. Seller's costs incurred in investigating and rectifying such defects shall be paid by Buyer upon demand. Buyer shall at all times remain solely responsible for the adequacy and accuracy of all information supplied by it.

10.4 Subject to Clause 12, the foregoing constitutes Seller's sole warranty and Buyer's exclusive remedy for breach thereof. No representations, warranties or conditions of any kind, express or implied, shall apply as to satisfactory quality, merchantability, fitness for any particular purpose or any other matter with respect to any of the Goods or Services.

11. PATENT, ETC. INFRINGEMENT:

11.1 Subject to the limitations set forth in Clause 12, Seller shall indemnify Buyer in the event of any claim for infringement of Letters Patent, Registered Design, Design Right, Trade Mark or Copyright ("Intellectual Property Rights") existing at the date of formation of the Contract arising from the use or sale of the Goods, against all reasonable costs and damages awarded against Buyer in any action for such infringement, or for which Buyer may become liable in any such action, provided always that Seller shall not be liable to so indemnify Buyer in the event that:

(i) such infringement arises as a result of Seller having followed a design or instruction furnished or given by Buyer, or the Goods having been used in a manner or for a purpose or in a country not specified by or disclosed to Seller prior to the date of the Contract or in association or combination with any other equipment or software, or (ii) Seller has at its expense procured for Buyer the right to continue to use the Goods or has modified or replaced the Goods so that the Goods no longer infringe, or (iii) Buyer has failed to give Seller the earliest possible notice in writing of any claim made or to be made or of any action threatened or brought against Buyer and/or Buyer has failed to permit Seller, at Seller's expense, to conduct and control any litigation that may ensue and all negotiations for a settlement of the claim, or (iv) Buyer has made without Seller's prior written consent any admission which is or may be prejudicial to Seller in respect of any such claim or action, or (v) the Goods have been modified without Seller's prior written authorisation.

11.2 Buyer warrants that any design or instructions furnished or given by it shall not cause Seller to infringe any Intellectual Property Rights in the performance of Seller's obligations under the Contract and shall indemnify Seller against all reasonable costs and damages which Seller may incur as a result of any breach of such warranty.

12. LIMITATION OF LIABILITY:

Except for death or personal injury caused by Seller and for Seller's willful misconduct or gross negligence: (i) Seller's and Seller Affiliates' total liability for any and all damages, claims or causes of action howsoever arising (including, without limitation, damage, claims or causes of action by virtue of tort, by breach of contract or statutory duty, negligence, strict liability or infringement of Intellectual Property Rights) shall not exceed the Contract Price; and (ii) Seller and Seller Affiliates shall not be liable to Buyer in any circumstances for any loss of profits, loss of contracts, loss of use, loss of data or consequential or indirect loss nor, save as set out in Clause 11 and in the preceding provisions of this Clause, for any loss or damage of any kind whatsoever, howsoever arising, claimed against or suffered by Buyer.

13. STATUTORY AND OTHER REGULATIONS:

13.1 If Seller's obligations under the Contract shall be increased or reduced by reason of the making or amendment after the date of Seller's quotation of any law or any order, regulation or by-law having the force of law that shall affect the performance of Seller's obligations under the Contract, the Contract Price and delivery period shall be adjusted accordingly and/or performance of the Contract suspended or terminated, as appropriate.

13.2 Except to the extent otherwise required by applicable law, Seller shall have no responsibility for the collection, treatment, recovery or disposal of (i) the Goods or any part thereof when they are deemed by law to be 'waste' or (ii) any items for which the Goods or any part thereof are replacements. If Seller is required by applicable law, including waste electrical and electronic equipment legislation, in particular European Directives 2002/96/EC (WEEE) and 2003/108/EC as implemented by Legislative Decree dated July 25, 2005 no. 151, to dispose of 'waste' Goods or any part thereof, Buyer shall, unless prohibited by applicable law, pay Seller, in addition to the Contract Price, either (i) Seller's standard charge for disposing of such Goods or (ii) if Seller does not have such a standard charge, Seller's costs (including all handling, transportation and disposal costs and a reasonable mark-up for overhead) incurred in disposing of such Goods.

13.3 Buyer's personnel shall, whilst on Seller's premises, comply with Seller's applicable site regulations and Seller's reasonable instructions, including but not limited to those relating to safety, security and electrostatic discharge.

14. COMPLIANCE WITH LAWS

Buyer agrees that all applicable import, export control and sanctions laws, regulations, orders and requirements, as they may be amended from time to time, including without limitation those of the United States, the European Union and the jurisdictions in which Seller and Buyer are established or from which items may be supplied, and the requirements of any licenses, authorisations, general licences or licence exceptions relating thereto will apply to its receipt and use of hardware, software, services and technology. In no event shall Buyer use, transfer, release, export or re-export any such hardware, software or technology in violation of such applicable laws, regulations, orders or requirements or the requirements of any licences, authorisations or licence exceptions relating thereto. Buyer agrees furthermore that it shall not engage in any activity that would expose the Seller or any of its affiliates to a risk of penalties under laws and regulations of any relevant jurisdiction prohibiting improper payments, including but not limited to bribes, to officials of any government or of any agency, instrumentality or political subdivision thereof, to political parties or political party officials or candidates for public office, or to any employee of any customer or supplier. Buyer agrees to comply with all appropriate legal, ethical and compliance requirements.

15. DEFAULT, INSOLVENCY AND CANCELLATION:

Seller shall be entitled, without prejudice to any other rights it may have, to cancel the Contract forthwith, wholly or partly, by notice in writing to Buyer, if (a) Buyer is in default of any of its obligations under the Contract and fails, within 30 (thirty) days of the date of Seller's notification in writing of the existence of the default, either to rectify such default if it is reasonably capable of being rectified within such period or, if the default is not reasonably capable of being rectified within such period, to take action to remedy the default or (b) on the occurrence of an Insolvency Event in relation to Buyer. "Insolvency Event" in relation to Buyer means any of the following: (i) a meeting of creditors of Buyer being held or an arrangement or composition with or for the benefit of its creditors being proposed by or in relation to Buyer; (ii) a chargeholder, receiver, administrative receiver or similar person taking possession of or being appointed over or any distress, execution or other process being levied or enforced (and not being discharged within seven days) on the whole or a material part of the assets of Buyer; (iii) Buyer ceasing to carry on business or being unable to pay its debts; (iv) Buyer or its directors or the holder of a qualifying floating charge giving notice of their intention to appoint, or making an application to the court for the appointment of, an administrator; (v) a petition being presented (and not being discharged within 28 days) or a resolution being passed or an order being made for the administration or the winding-up, bankruptcy or dissolution of Buyer; or (vi) the happening in relation to Buyer of an event analogous to any of the above in any jurisdiction in which it is incorporated or resident or in which it carries on business or has assets. Seller shall be entitled to recover from Buyer or Buyer's representative all costs and damages incurred by Seller as a result of such cancellation, including a reasonable allowance for overheads and profit (including but not limited to loss of prospective profits and overheads).

16. SUPPLEMENTARY TERMS AND CONDITIONS:

If the Goods comprise or include a control system, Seller's Supplementary Terms and Conditions Applicable to the Supply of Control Systems and Related Services shall apply to the control system and related services only. Such Supplementary Terms and Conditions shall take precedence over these Standard Terms and Conditions of Sale; copies are available from Seller upon request

17. MISCELLANEOUS:

17.1 No waiver by either party with respect to any breach or default or of any right or remedy and no course of dealing, shall be deemed to constitute a continuing waiver of any other breach or default or of any other right or remedy, unless such waiver be expressed in writing and signed by the party to be bound.

17.2 If any clause, sub-clause or other provision of the Contract is invalid under any statute or rule of law, such provision, to that extent only, shall be deemed to be omitted without affecting the validity of the remainder of the Contract.

17.3 Buyer shall not be entitled to assign its rights or obligations hereunder without the prior written consent of Seller.

17.4 Seller enters into the Contract as principal. Buyer agrees to look only to Seller for due performance of the Contract.

17.5 GOODS AND SERVICES PROVIDED HEREUNDER ARE NOT SOLD OR INTENDED FOR USE IN ANY NUCLEAR OR NUCLEAR RELATED APPLICATIONS. Buyer (i) accepts Goods and Services in accordance with the foregoing restriction, (ii) agrees to communicate such restriction in writing to any and all subsequent purchasers or users and (iii) agrees to defend, indemnify and hold harmless Seller and Seller Affiliates from any and all claims, losses, liabilities, suits, judgements and damages, including incidental and consequential damages, arising from use of Goods and Services in any nuclear or nuclear related applications, whether the cause of action be based in tort, contract or otherwise, including allegations that the Seller's liability is based on negligence or strict liability.

17.6 The Contract shall in all respects be construed in accordance with the laws of Italy excluding, however, any effect on such laws of the 1980 Vienna Convention on Contracts for the International Sale of Goods, and to the fullest extent permitted by Law, shall be without regard to any conflict of laws or rules which might apply the laws of any other jurisdiction. All disputes arising out of the Contract shall be subject to the exclusive jurisdiction of the courts in Milan, Italy.

17.7 The headings to the Clauses and paragraphs of the Contract are for guidance only and shall not affect the interpretation thereof.

17.8 All notices and claims in connection with the Contract must be in writing.

System Plast S.r.l.
Via G. Guareschi, 2
24060 Telgate (Bergamo)
Italy