

Chains & sprockets	Wear strips	Side guide brackets & accessories	Levelers	Engineering manual
Modular belts & sprockets	Chain & belt return systems	Frame & structure supports	Bearing supports	
Curves & tracks	<b>Side guide solutions</b>	Miscellaneous products	Equipment	

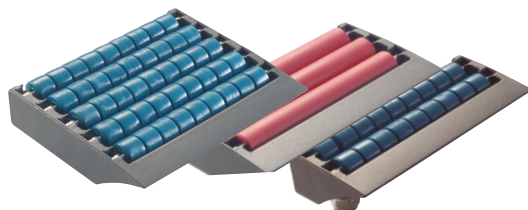
**SYSTEM  
PLAST®**

**Smart  
guide**

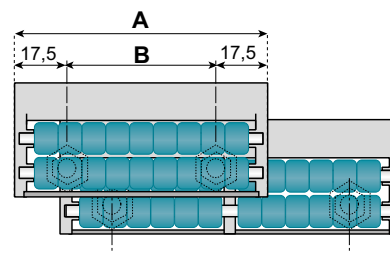
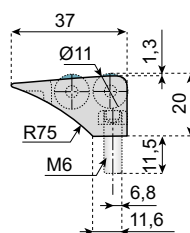
**5 2 6 7 0 a**

## ROLLER TRANSFER PLATES - 85 & 115 mm VERSION

[www.SystemPlastSmartGuide.com](http://www.SystemPlastSmartGuide.com)



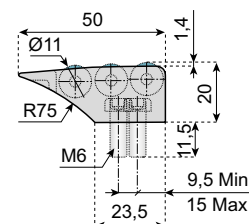
### VERSION WITH 2 ROLLERS



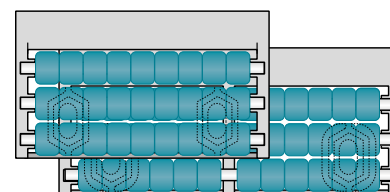
#### Type:

- MR** Multi rollers, suitable for irregular shaped products
- SR** Plastic rollers with noise reducing characteristics
- SSA** Plastic rollers with micro ball bearings for ultra low coefficient of friction

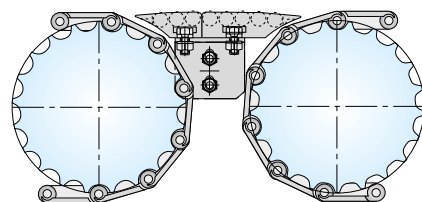
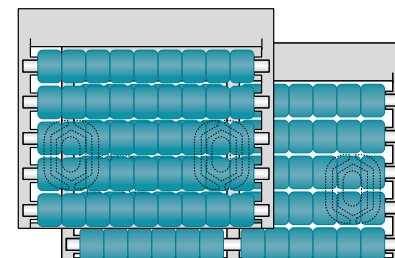
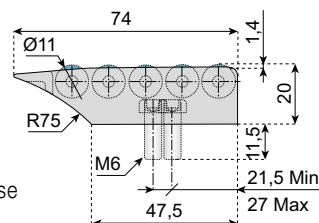
### VERSION WITH 3 ROLLERS



**B = Center distance of fasteners**



### VERSION WITH 5 ROLLERS



#### Material:

**Body:** Acetal thermoplastic resin

**Rollers:** Acetal (types MR & SSA), Thermoplastic resin with noise reducing characteristics (type SR)

Pins, hardware and micro ball bearings (SSA only): Stainless steel

ROLLER TYPE: A=85 - B=50					ROLLER TYPE: A=115 - B=80				
WITH 2 ROLLERS					WITH 2 ROLLERS				
Fastener M6		TME-330R2MR-FM	TME-330R2SR-FM	TME-330R2SSA-FM	Fastener M6		TME-450R2MR-FM	TME-450R2SR-FM	TME-450R2SSA-FM
		TME-330R2MR-BM	TME-330R2SR-BM	TME-330R2SSA-BM			TME-450R2MR-BM	TME-450R2SR-BM	TME-450R2SSA-BM
Nut M6		TME-330R2MR-NM	TME-330R2SR-NM	TME-330R2SSA-NM			TME-450R2MR-NM	TME-450R2SR-NM	TME-450R2SSA-NM
WITHOUT SCREWS		TME-330R2MR	TME-330R2SR	TME-330R2SSA	WITHOUT SCREWS		TME-450R2MR	TME-450R2SR	TME-450R2SSA
WITH 3 ROLLERS					WITH 3 ROLLERS				
Fastener M6		TME-330R3MR-FM	TME-330R3SR-FM	TME-330R3SSA-FM	Fastener M6		TME-450R3MR-FM	TME-450R3SR-FM	TME-450R3SSA-FM
		TME-330R3MR-BM	TME-330R3SR-BM	TME-330R3SSA-BM			TME-450R3MR-BM	TME-450R3SR-BM	TME-450R3SSA-BM
Nut M6		TME-330R3MR-NM	TME-330R3SR-NM	TME-330R3SSA-NM			TME-450R3MR-NM	TME-450R3SR-NM	TME-450R3SSA-NM
WITHOUT SCREWS		TME-330R3MR	TME-330R3SR	TME-330R3SSA	WITHOUT SCREWS		TME-450R3MR	TME-450R3SR	TME-450R3SSA
WITH 5 ROLLERS					WITH 5 ROLLERS				
Fastener M6		TME-330R5MR-FM	TME-330R5SR-FM	TME-330R5SSA-FM	Fastener M6		TME-450R5MR-FM	TME-450R5SR-FM	TME-450R5SSA-FM
		TME-330R5MR-BM	TME-330R5SR-BM	TME-330R5SSA-BM			TME-450R5MR-BM	TME-450R5SR-BM	TME-450R5SSA-BM
Nut M6		TME-330R5MR-NM	TME-330R5SR-NM	TME-330R5SSA-NM			TME-450R5MR-NM	TME-450R5SR-NM	TME-450R5SSA-NM
WITHOUT SCREWS		TME-330R5MR	TME-330R5SR	TME-330R5SSA	WITHOUT SCREWS		TME-450R5MR	TME-450R5SR	TME-450R5SSA

Chains & sprockets	Wear strips	Side guide brackets & accessories	Levelers	Engineering manual
Modular belts & sprockets	Chain & belt return systems	Frame & structure supports	Bearing supports	
Curves & tracks	<b>Side guide solutions</b>	Miscellaneous products	Equipment	

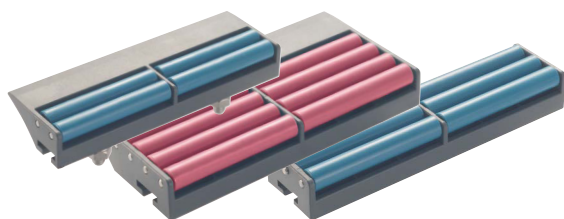
# SYSTEM PLAST®

Smart guide

5 2 6 7 1 a

## ROLLER TRANSFER PLATES - 6" & 9" VERSION

www.SystemPlastSmartGuide.com

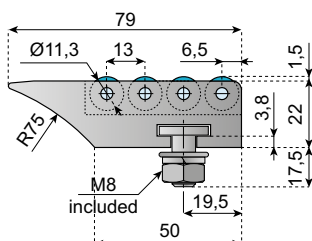
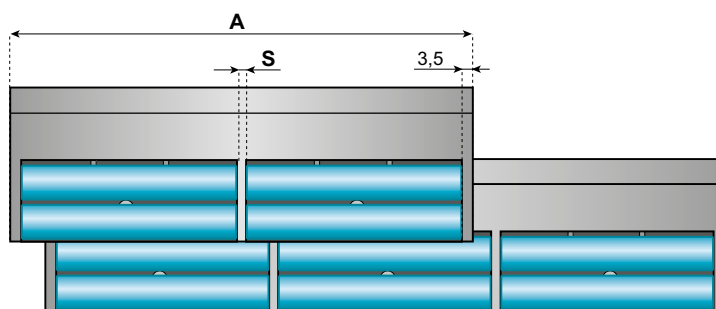
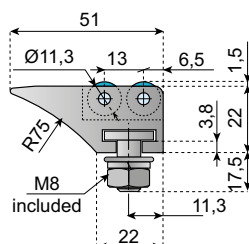


### Type:

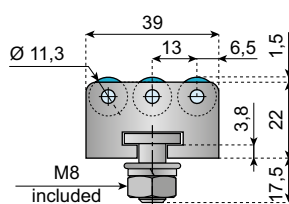
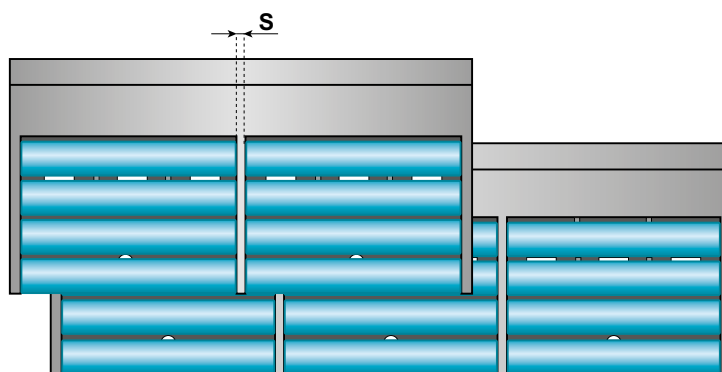
**SR** Plastic rollers with noise reducing characteristics

**SSA** Plastic rollers with micro ball bearings for ultra low coefficient of friction

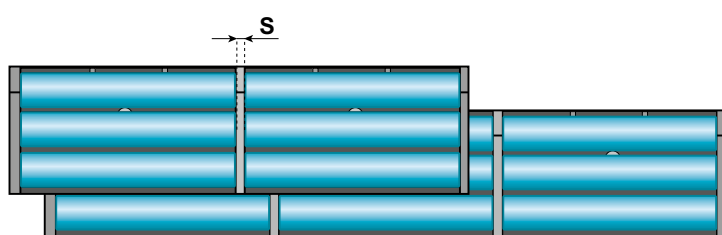
### VERSION WITH 2 ROLLERS



### VERSION WITH 4 ROLLERS



### INTERMEDIATE ROLLER MODULE









### Material:

**Body:** Acetal thermoplastic resin

**Rollers:** Acetal (type SSA), Thermoplastic resin with noise reducing characteristics (type SR)

Pins, hardware and micro ball bearings (SSA only): Stainless steel

6" VERSION	
Roller type: A=154 - S=3	
	
 WITH 2 ROLLERS	
TME-K600R2SR-FM	TME-K600R2SSA-FM
 WITH 4 ROLLERS	
TME-K600R4SR-FM	TME-K600R4SSA-FM
 WITH 3 ROLLERS	
TMC-K600R3SR-FM	TMC-K600R3SSA-FM

9" VERSION	
Roller type: A=225 - S=1.5	
	
 WITH 2 ROLLERS	
TME-K900R2SR-FM	TME-K900R2SSA-FM
 WITH 4 ROLLERS	
TME-K900R4SR-FM	TME-K900R4SSA-FM
 WITH 3 ROLLERS	
TMC-K900R3SR-FM	TMC-K900R3SSA-FM



Chains & sprockets	Wear strips	Side guide brackets & accessories	Levelers	Engineering manual
Modular belts & sprockets	Chain & belt return systems	Frame & structure supports	Bearing supports	
Curves & tracks	<b>Side guide solutions</b>	Miscellaneous products	Equipment	

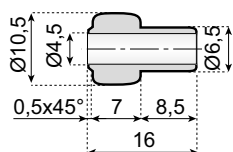
**SYSTEM  
PLAST®**



**Smart  
guide**

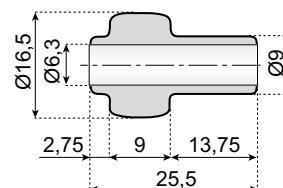
**5 2 6 8 0 a**



## ACCESSORIES FOR ROLLER GUIDES

[www.SystemPlastSmartGuide.com](http://www.SystemPlastSmartGuide.com)

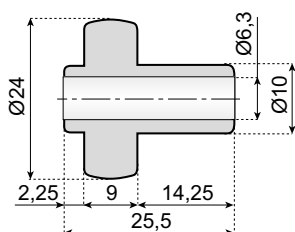



 Material	ROLLER WHITE	ROLLER GREEN	
	ITEM DESCRIPTION		
POM	RF-11B4ML16-PMW	RF-11B4ML16-PMG	100

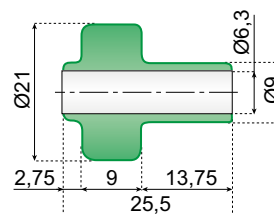




 Material	ROLLER WHITE	ROLLER GREEN	
	ITEM DESCRIPTION		
POM	RF-17B6ML26-PMW 100	RF-17B6ML26-PMG	100

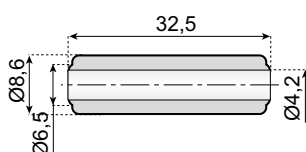
**MOQ** Min. order quantity: 2500 pcs.




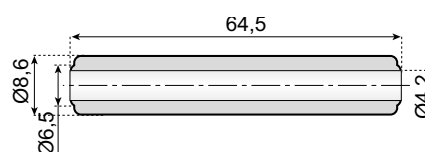
<div>Material</div>	ROLLER WHITE	ROLLER BLACK	<div></div>
	ITEM DESCRIPTION		
POM	RF-24B6ML26-PMW	RF-24B6ML26-PMSD	100





 Material	ROLLER GREEN	
	ITEM DESCRIPTION	
POM	RF-21B6ML26-PMG	100



<div>Material</div>	ROLLER WHITE	ROLLER GREEN	<div></div>
	ITEM DESCRIPTION		
POM	R-9B4ML33-PMW	R-9B4ML33-PMG	100



 Material	ROLLER WHITE	ROLLER GREEN	
	ITEM DESCRIPTION		
POM	R-9B4ML65-PMW	R-9B4ML65-PMG	100