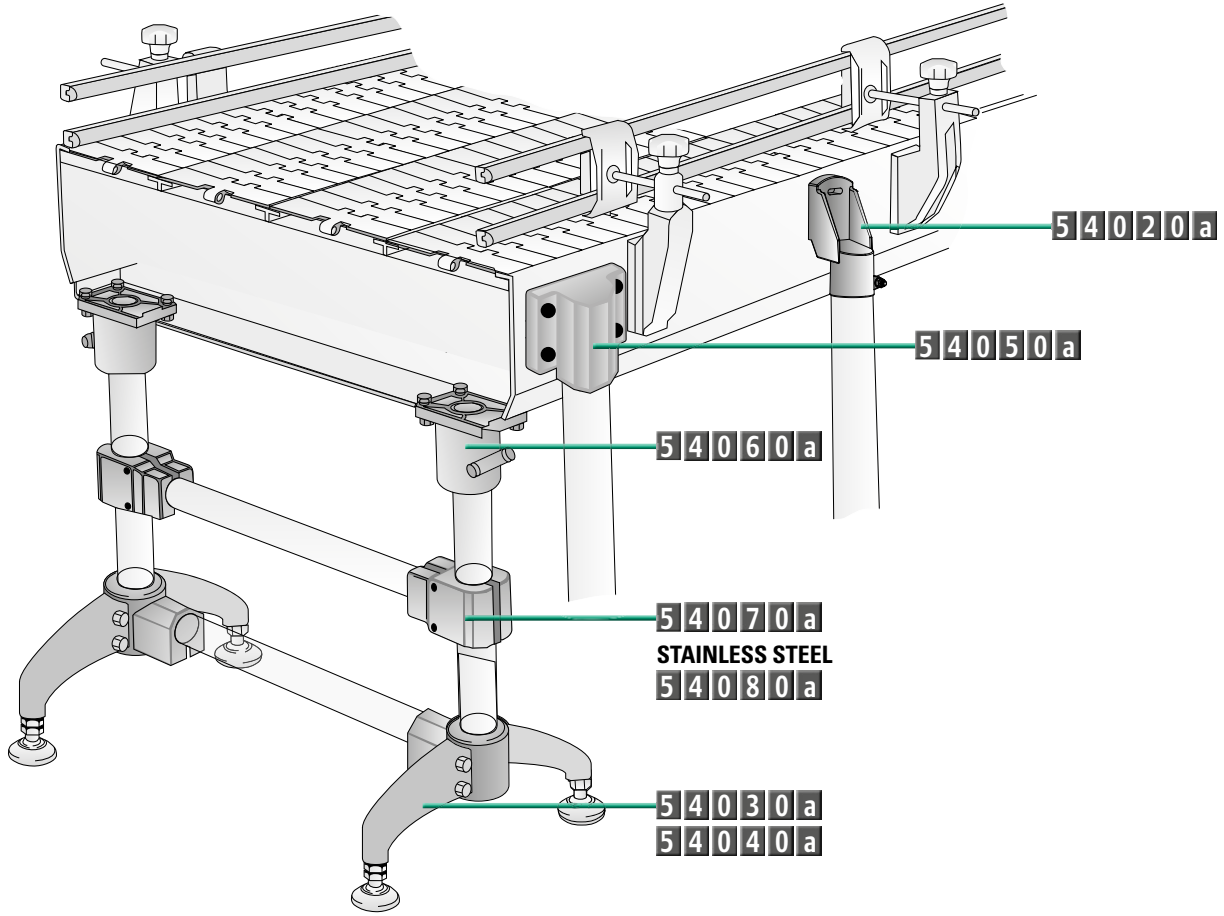


Chains & sprockets	Wear strips	Side guide brackets & accessories	Levelers	Engineering manual
Modular belts & sprockets	Chain & belt return systems	Frame & structure supports	Bearing supports	
Curves & tracks	Side guide solutions	Miscellaneous products	Equipment	

5 4 0 1 0 a

FRAME & STRUCTURE SUPPORTS INDEX

www.SystemPlastSmartGuide.com



Chains & sprockets	Wear strips	Side guide brackets & accessories	Levelers	Engineering manual
Modular belts & sprockets	Chain & belt return systems	Frame & structure supports	Bearing supports	
Curves & tracks	Side guide solutions	Miscellaneous products	Equipment	



54020a

SIDE MOUNTING TOP BRACKETS

www.SystemPlastSmartGuide.com

Material: reinforced polyamide. Screw, nut and washers in stainless steel AISI 304

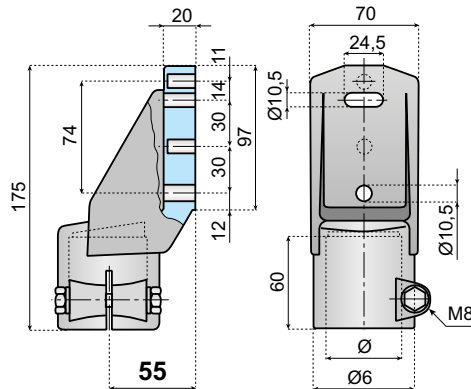
Note: the bracket can be inclined by 5° in both directions when using the lower hole and the upper slot hole.

There are two optional holes that can easily be opened by removing the thin membrane.

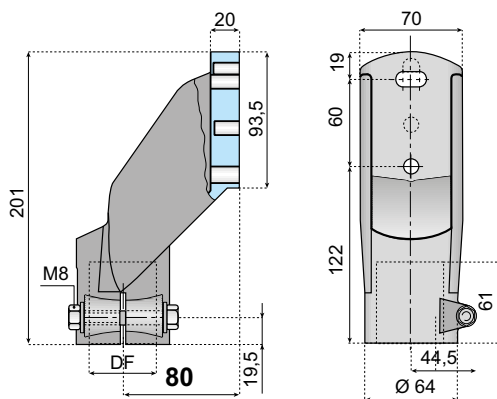
In this way the centre distance of the holes can be:

- Enlarged to 70 mm or
- Reduced to 30 mm

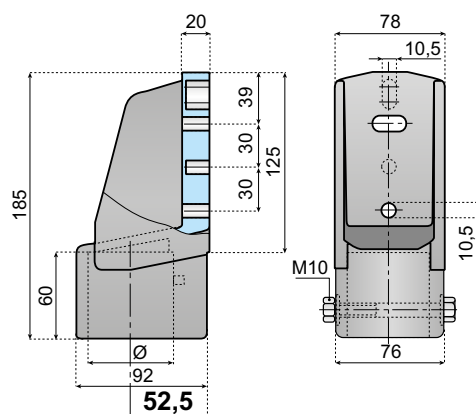
Then it is also possible to use an incline of 10° in both directions



MATERIAL	TUBE Ø 48.3	
PA-FG BLACK	VG-3050-R150	



MATERIAL	DF - TUBE Ø		DF - TUBE ∇	
	48.3	50.9	40X40	
PA-FG BLACK	VG-3050E-R150	VG-3050E-R200T	VG-3050E-S40M	25



MATERIAL	TUBE Ø 60.3	
PA-FG BLACK	VG-3050-R200	

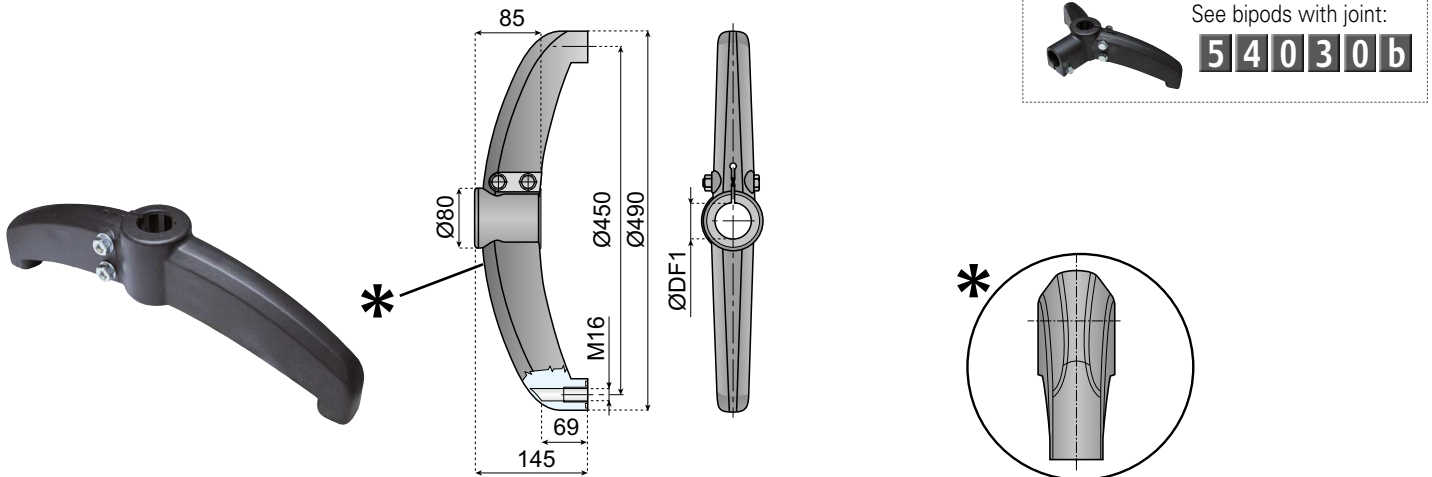
Chains & sprockets	Wear strips	Side guide brackets & accessories	Levelers	Engineering manual
Modular belts & sprockets	Chain & belt return systems	Frame & structure supports	Bearing supports	
Curves & tracks	Side guide solutions	Miscellaneous products	Equipment	

54030a

SUPPORT BASES

www.SystemPlastSmartGuide.com

Features: Increased stability. Self cleaning design for all support bases in this page
Material: Reinforced polyamide threaded bushings and spacers in nickel plated brass.



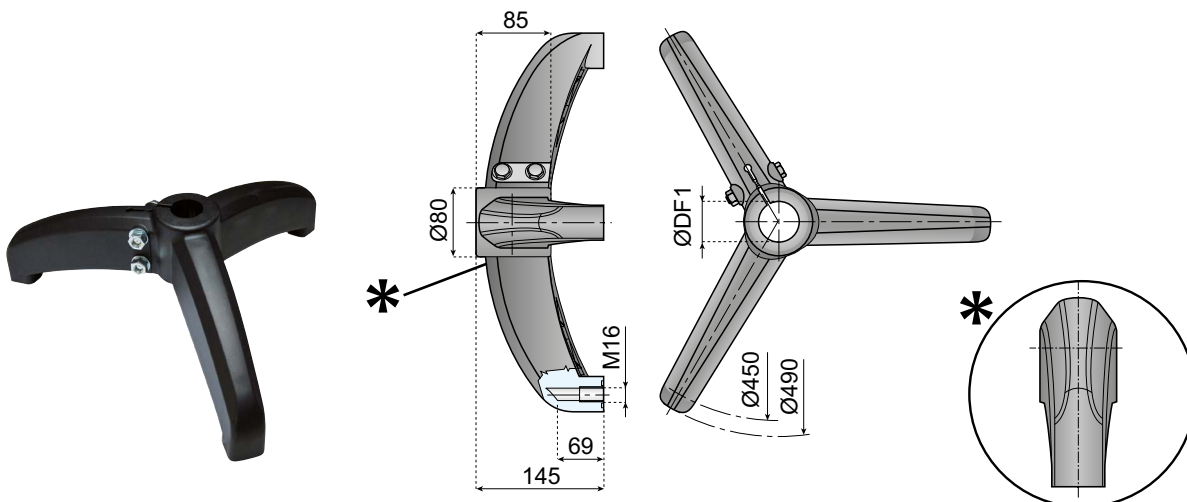
BIPODS

Zn: Zinc Plated Steel

SS AISI 304:

Stainless steel

		TUBE Ø - DF1				
		42,4	48,3	50,9	60,3	
		(1 1/4")	(1 1/2")	-	(2")	
PA-FG BLACK	FASTENERS	ITEM DESCRIPTION				15
	Zn	VG-BP-R125-BM16-G	VG-BP-R150-BM16-G	VG-BP-R200T-BM16-G	VG-BP-R200-BM16-G	
SS AISI 304	VG-BP-R125-BM16-S	VG-BP-R150-BM16-S	VG-BP-R200T-BM16-S	VG-BP-R200-BM16-S		



TRIPODS

Zn: Zinc Plated Steel

SS AISI 304:

Stainless steel

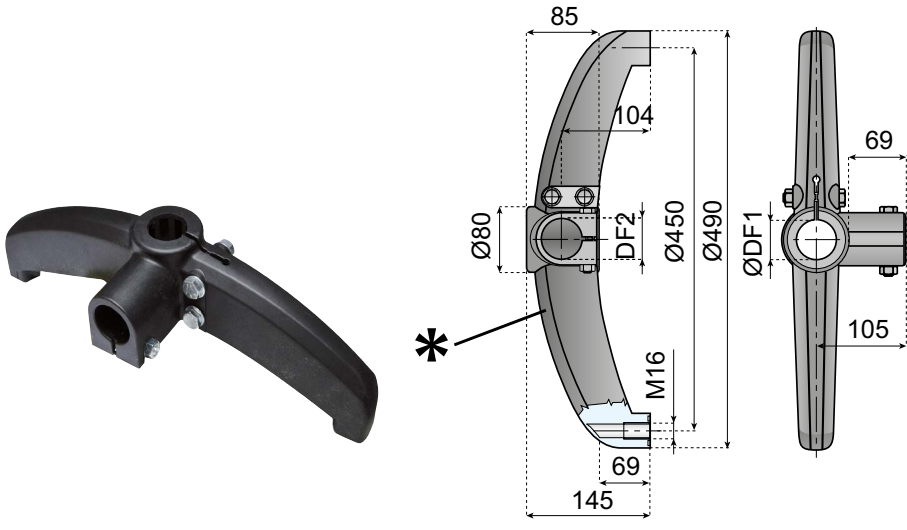
		TUBE Ø - DF1				
		42,4	48,3	50,9	60,3	
		(1 1/4")	(1 1/2")	-	(2")	
PA-FG BLACK	FASTENERS	ITEM DESCRIPTION				15
	Zn	VG-TP-R125-BM16-G	VG-TP-R150-BM16-G	VG-TP-R200T-BM16-G	VG-TP-R200-BM16-G	
SS AISI 304	VG-TP-R125-BM16-S	VG-TP-R150-BM16-S	VG-TP-R200T-BM16-S	VG-TP-R200-BM16-S		

Chains & sprockets	Wear strips	Side guide brackets & accessories	Levelers	Engineering manual
Modular belts & sprockets	Chain & belt return systems	Frame & structure supports	Bearing supports	
Curves & tracks	Side guide solutions	Miscellaneous products	Equipment	

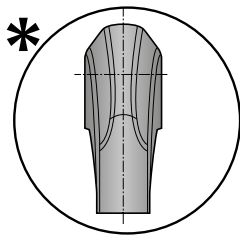
54030b

SUPPORT BASES

www.SystemPlastSmartGuide.com



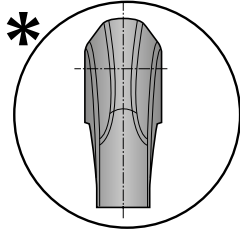
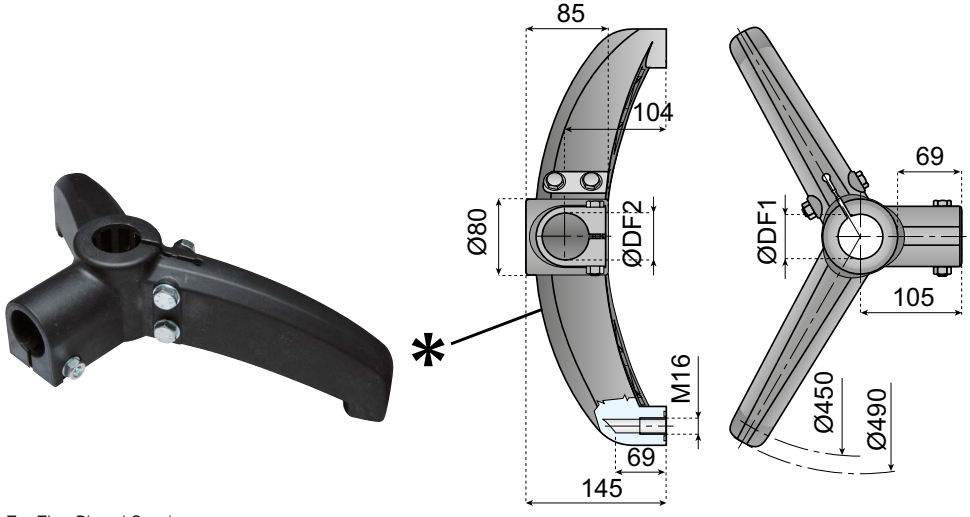
See bipods & tripods:
54030a



Zn: Zinc Plated Steel
SS AISI 304: Stainless steel

BIPODS 180° WITH JOINT

PA-FG BLACK	TUBE Ø - DF1				15
	42.4 (1 ¼")	48.3 (1 ½")	50.9 -	60.3 (2")	
TUBE Ø DF2	FASTENERS	ITEM DESCRIPTION			
42,4 (1 ¼")	Zn	VG-BPT-R125-R125-BM16-G	VG-BPT-R150-R125-BM16-G	VG-BPT-R200T-R125-BM16-G	VG-BPT-R200-R125-BM16-G
	SS AISI 304	VG-BPT-R125-R125-BM16-S	VG-BPT-R150-R125-BM16-S	VG-BPT-R200T-R125-BM16-S	VG-BPT-R200-R125-BM16-S
48,3 (1 ½")	Zn	-	VG-BPT-R150-R150-BM16-G	-	VG-BPT-R200-R150-BM16-G
	SS AISI 304	-	VG-BPT-R150-R150-BM16-S	-	VG-BPT-R200-R150-BM16-S



Zn: Zinc Plated Steel
SS AISI 304: Stainless steel

BIPODS 120° WITH JOINT

PA-FG BLACK	TUBE Ø - DF1				15
	42.4 (1 ¼")	48.3 (1 ½")	50.9 -	60.3 (2")	
TUBE Ø DF2	FASTENERS	ITEM DESCRIPTION			
42,4 (1 ¼")	Zn	VG-BPV-R125-R125-BM16-G	VG-BPV-R150-R125-BM16-G	VG-BPV-R200T-R125-BM16-G	VG-BPV-R200-R125-BM16-G
	SS AISI 304	VG-BPV-R125-R125-BM16-S	VG-BPV-R150-R125-BM16-S	VG-BPV-R200T-R125-BM16-S	VG-BPV-R200-R125-BM16-S
48,3 (1 ½")	Zn	-	VG-BPV-R150-R150-BM16-G	-	VG-BPV-R200-R150-BM16-G
	SS AISI 304	-	VG-BPV-R150-R150-BM16-S	-	VG-BPV-R200-R150-BM16-S

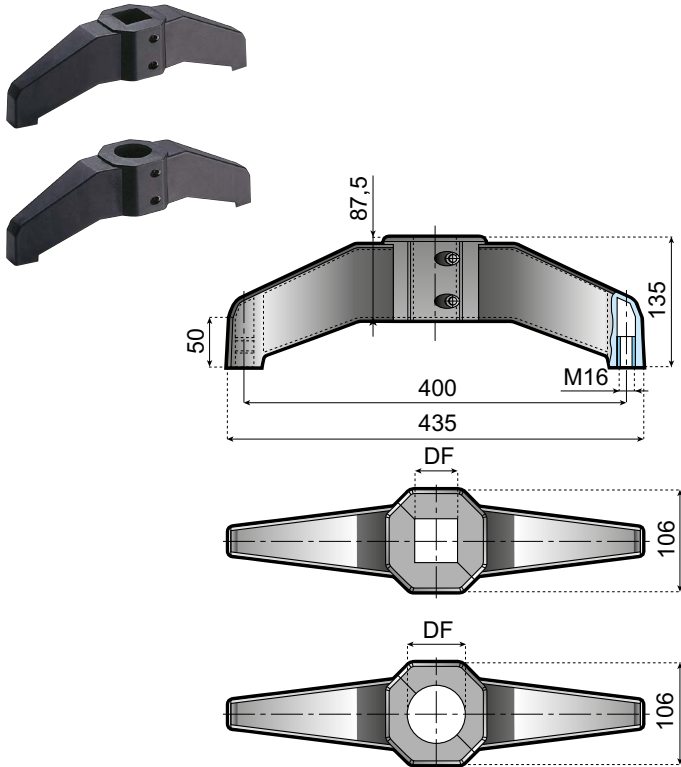
Chains & sprockets	Wear strips	Side guide brackets & accessories	Levelers	Engineering manual
Modular belts & sprockets	Chain & belt return systems	Frame & structure supports	Bearing supports	
Curves & tracks	Side guide solutions	Miscellaneous products	Equipment	



54040a

SUPPORT BASES

www.SystemPlastSmartGuide.com



Material: reinforced polyamide threaded bushings in nickel plated brass fasteners in stainless steel AISI 304.

PA-FG BLACK	TUBE ∅		
	45X45	50X50	
ITEM DESCRIPTION			
BPS-4020-S45M-BM16-S	BPS-4020-S50M-BM16-S		15

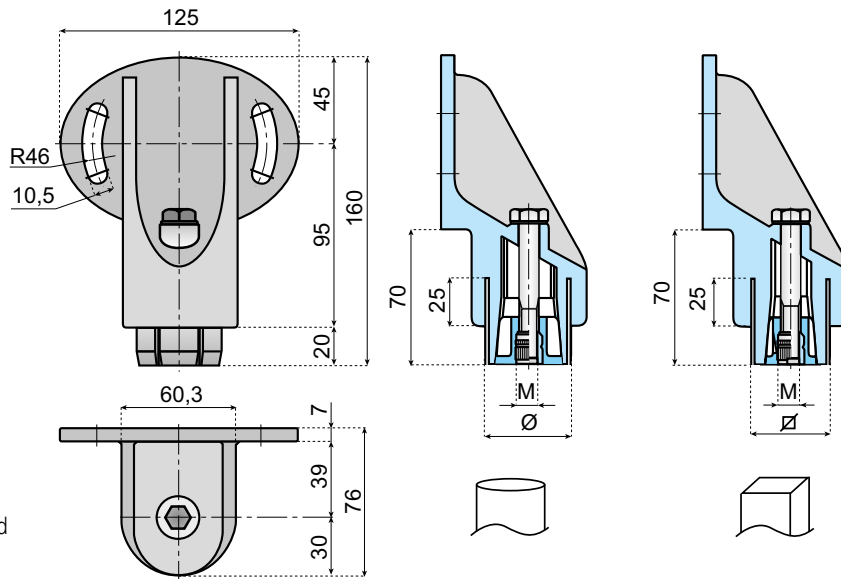
Chains & sprockets	Wear strips	Side guide brackets & accessories	Levelers	Engineering manual
Modular belts & sprockets	Chain & belt return systems	Frame & structure supports	Bearing supports	
Curves & tracks	Side guide solutions	Miscellaneous products	Equipment	



54050a

SIDE MOUNTING TOP BRACKETS

www.SystemPlastSmartGuide.com



Side mounting top bracket with expansion plug:
 - for round Tubes \varnothing 48,3/50,9 x1.5 mm;
 - for square Tubes 40x40x2 mm.

Components: external part in reinforced polyamide.
 Conical insert in reinforced polyamide.
 Threaded bushing in nickel plated brass.
 Bolt and washer in stainless steel.
Note: max recommended tightening torque 2.5 Kgm.
Application: the bracket can be inclined by 30°.

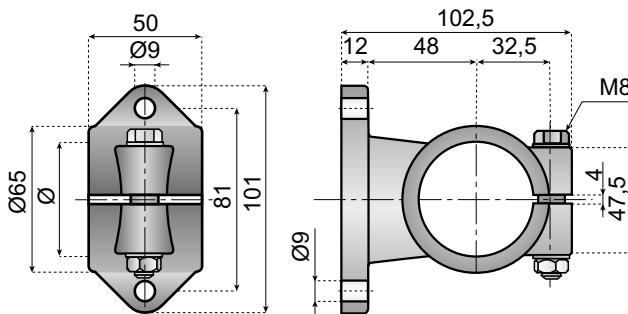


PA-FG BLACK

M10

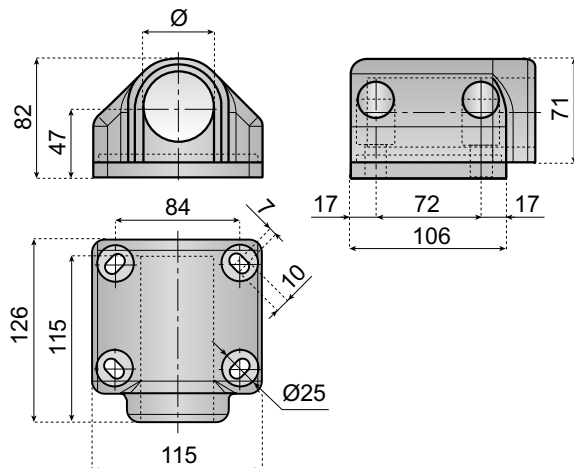
		TUBE \varnothing		TUBE \sphericalangle	
		48.3	50.9	40X40	
		ITEM DESCRIPTION			
PA-FG BLACK	M10	VG-3051-R150-NB <small>MOQ</small>	VG-3051-R200T-NB <small>MOQ</small>	VG-3051-S40M-NB <small>MOQ</small>	25

MOQ Min. order quantity: 300 pcs.



Material: reinforced polyamide, screws and nuts in stainless steel AISI 304.
Note: max. recommended tightening torque 1.5 Kgm.

PA-FG BLACK	TUBE \varnothing 48,3	
	ITEM DESCRIPTION	
	VG-3052-R150	25



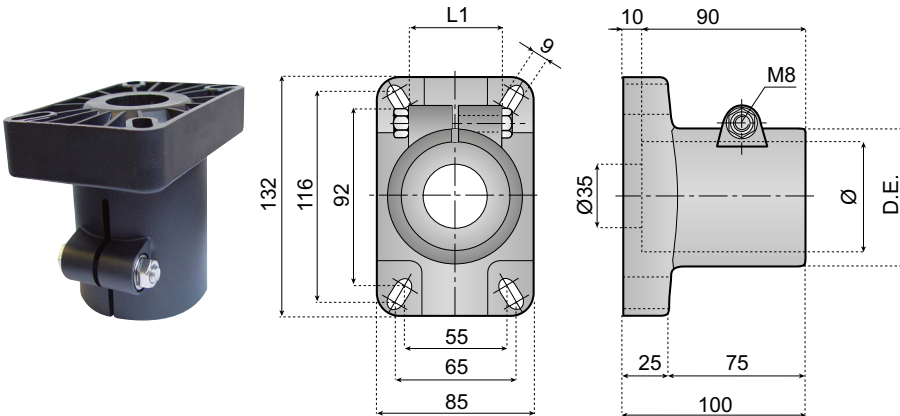
PA-FG BLACK	TUBE \varnothing 48,3	
	ITEM DESCRIPTION	
	VG-3055-R150	25

Chains & sprockets	Wear strips	Side guide brackets & accessories	Levelers	Engineering manual
Modular belts & sprockets	Chain & belt return systems	Frame & structure supports	Bearing supports	
Curves & tracks	Side guide solutions	Miscellaneous products	Equipment	

5 4 0 6 0 a

SUPPORT HEADS

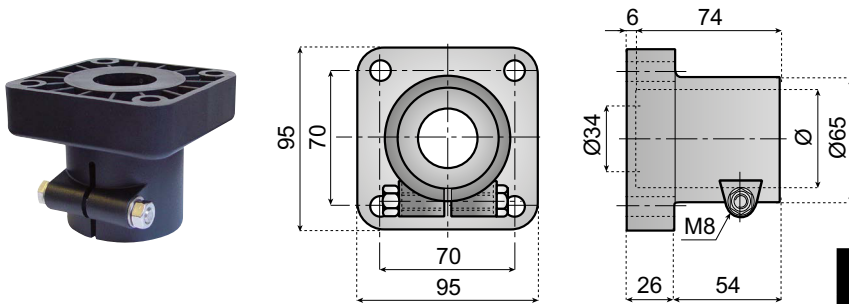
www.SystemPlastSmartGuide.com



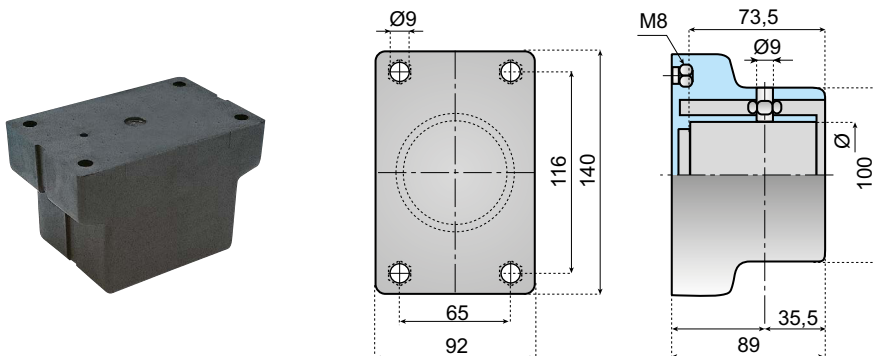
Material: reinforced polyamide; screw, nut and washers in stainless steel AISI 304.

Note: max. recommended tightening torque 2 Kgm.

	D.E.	L1	TUBE Ø				
			42,4	48,3	50,9	60,3	
PA-FG BLACK	ITEM DESCRIPTION						
	65	43	-	VG-3080-R150	-	-	
	65	43	-	-	VG-3080-R200T	-	
	76	43	-	-	-	VG-3080-R200	



	TUBE Ø		
	48,3	50,9	
PA-FG BLACK	ITEM DESCRIPTION		25
	VG-3070-R150	VG-3070-R200T	



	TUBE Ø		
	60,3		
PA-FG BLACK	ITEM DESCRIPTION		25
	VG-3087-R200		

MOQ Min. order quantity: 300 pcs.

Material: polyamide, stainless steel bolts.

Note: max. recommended tightening torque 1.5 Kgm.

Chains & sprockets	Wear strips	Side guide brackets & accessories	Levelers	Engineering manual
Modular belts & sprockets	Chain & belt return systems	Frame & structure supports	Bearing supports	
Curves & tracks	Side guide solutions	Miscellaneous products	Equipment	

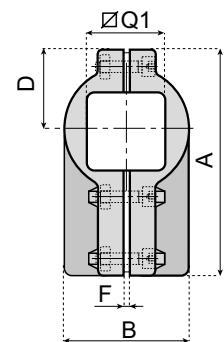
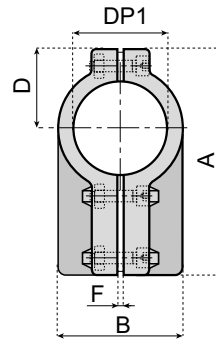
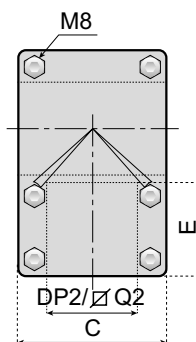
54070a

CONNECTING JOINTS

www.SystemPlastSmartGuide.com



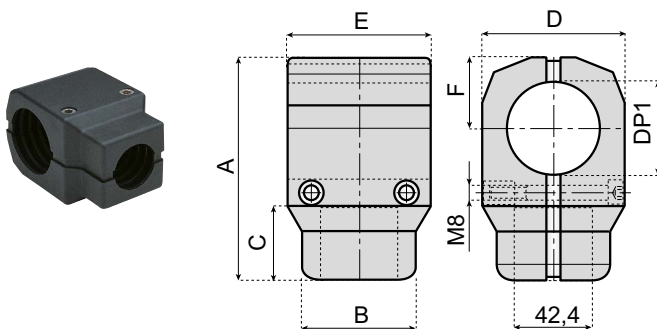
		DP1/Q1	A	B	C	D	E	F
PA-FG BLACK		42,4	134	68	86	45	60	3
		48,3	134	68	86	45	60	3
		50,9	146	80	98	51	60	3
		60,3	146	80	98	51	60	3
		40	134	68	86	45	60	3
		50	146	80	98	51	60	3



Material: reinforced polyamide, screws and nuts in stainless steel AISI 304.

Note: max. recommended tightening torque 1.5 Kgm.

	TUBE Ø	DP2				Q2			
		42,4	48,3	50,9	60,3	40	50		
		ITEM DESCRIPTION							
	42,4	VG-3110-R125-R125	-	-	-	-	-	25	
	48,3	VG-3110-R150-R125	VG-3110-R150-R150	-	-	-	-		
	50,9	VG-3110-R200T-R125	VG-3110-R200T-R150	VG-3110-R200T-R200T	-	-	-		
	60,3	VG-3110-R200-R125	VG-3110-R200-R150	VG-3110-R200-R200T	VG-3110-R200-R200	-	-		
	40	-	-	-	-	VG-3110-S40M-S40M	-		
	50	-	-	-	-	-	VG-3110-S50M-S50M		



PA-FG BLACK	DP1	A	B	C	D	E	F	ITEM DESCRIPTION	25
	48,3	122	62	41	78	78	39	VG-3115-R150-R125	
	50,9	122	62	41	78	78	39	VG-3115-R150T-R125	
	60,3	130	65	-	82	82	42,5	VG-3115-R200-R125	

Material: reinforced polyamide, screws in stainless steel AISI 304, bushings in nickel plated brass.

Note: max. recommended tightening torque 1.5 Kgm.

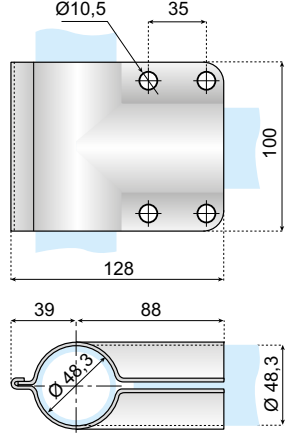
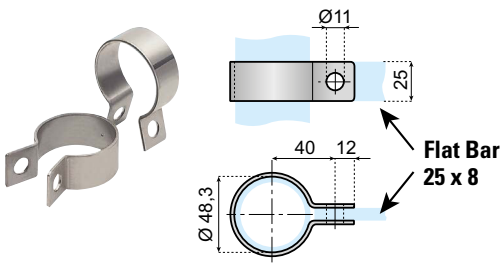
Chains & sprockets	Wear strips	Side guide brackets & accessories	Levelers	Engineering manual
Modular belts & sprockets	Chain & belt return systems	Frame & structure supports	Bearing supports	
Curves & tracks	Side guide solutions	Miscellaneous products	Equipment	



54080a

CONNECTING JOINTS

www.SystemPlastSmartGuide.com



Thickness: S = 2 mm.
Surface: tumbling finish.
Use: with Tubes Ø 48,3
Note: the connecting joint is supplied without screws.
Material: Stainless Steel AISI 304.

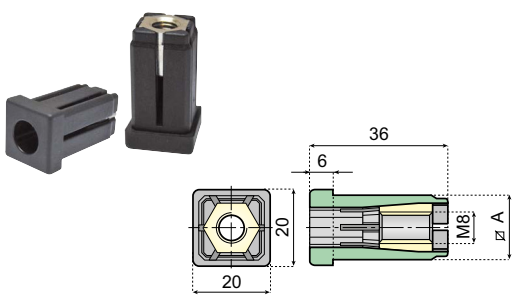
Material: Stainless Steel AISI 304.

ITEM DESCRIPTION	
TC-R150-S	25

ITEM DESCRIPTION	
TCHD-R150-R150-S	25

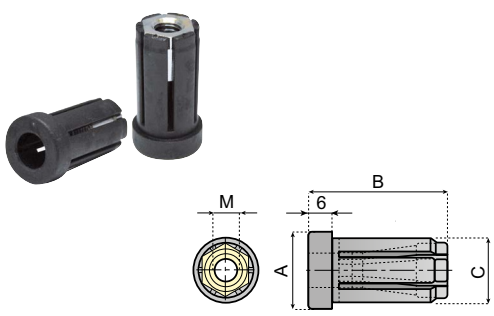
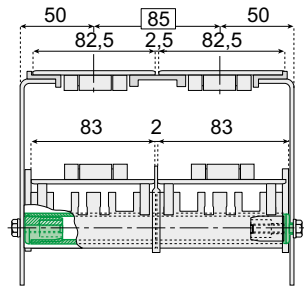
EXPANSION PLUGS FOR ROUND AND SQUARE TUBES

Components and Material:
 Conical insert is in nickel plated brass.
 * Conical insert is in reinforced polyamide.
Notes: bolt and washer are not included.
Technical information:
 Max. load for removal Kgf 420 (static conditions).



EXPANSION PLUG FOR SQUARE TUBES

MATERIAL	M8	FOR SQUARE TUBE	
	ITEM DESCRIPTION		
PA BLACK	TEE-S2015-BM8	20 x 20 x 1,5	100
	TEE-S2020-BM8	20 x 20 x 2	



EXPANSION PLUG FOR ROUND TUBES

MATERIAL	M	DIMENSIONS mm			TUBE DIMENSIONS			ITEM DESCRIPTION	
		A	B	C	EXT. Ø	INT. Ø	WALL		
PA BLACK	8	20	36	16,8	20	17	1,5	TEE-R2015-BM8	50
		38	42	34,8	38	35	1,5	TEE-3815-BM10	
	10	44,5	42	39,2	42,4	39,4	1,5	TEE-4415-BM10	
		48,5	50	44,7	48,3	45,3	1,5	* TEE-4815-BM10 ^{MOQ}	

MOQ Min. order quantity: 300 pcs.

Chains & sprockets	Wear strips	Side guide brackets & accessories	Levelers	Engineering manual
Modular belts & sprockets	Chain & belt return systems	Frame & structure supports	Bearing supports	
Curves & tracks	Side guide solutions	Miscellaneous products	Equipment	

5 4 0 8 0 z

APPLICATION EXAMPLES

www.SystemPlastSmartGuide.com



**Accumulation system for conical products.
The guide on top improves product stability.**

For details clamps , go to:

5 3 6 2 0 a



Frame supporting components.

Go to:

5 4 0 1 0 a