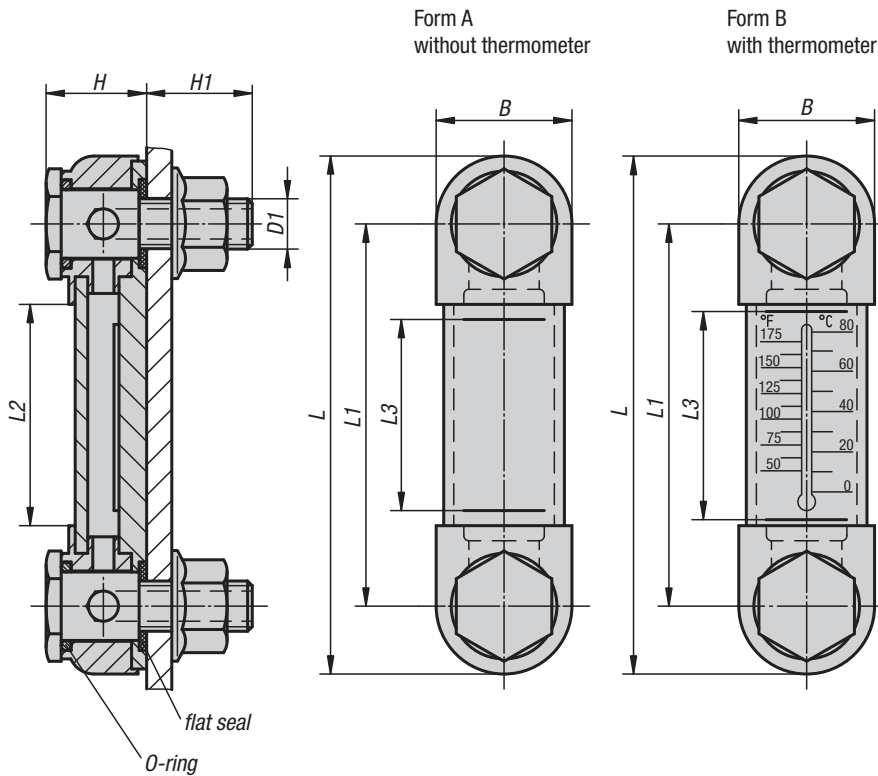


Level indicators, screw plugs



Oil level gauges



Material:

Housing thermoplastic polyamide.
O-ring and flat seal rubber (NBR).
Reflector aluminium.
Screw and hex nut steel.

Version:

Transparent housing, high mechanical stability, non-ageing, temperature resistant with oil up to 100 °C, with water up to 70 °C.
Reflector painted white, markings and scale black.
Screw and hexagon nut galvanized.

Sample order:

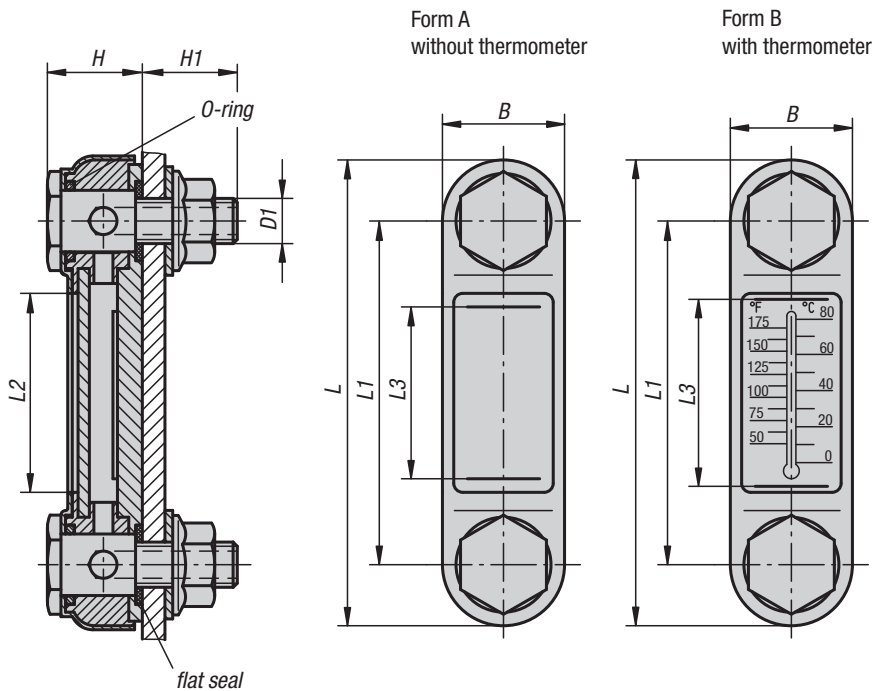
K0443.1127

Note:

The oil level gauges can either be fastened as shown in the illustration or directly in the threaded hole. Centre distance for the fastening holes = $L1 \pm 0.5$.

KIPP Oil level gauges

| Order No. | Form | B | D1 | H | H1 | L | L1 | L2 | L3 | Number of fastening screws | Thermometer scale |
|------------|------|----|-----|----|----|-----|-----|----|----|----------------------------|--------------------------|
| K0443.1076 | A | 27 | M10 | 20 | 21 | 103 | 76 | 44 | 37 | 2 | - |
| K0443.1127 | A | 27 | M12 | 19 | 18 | 151 | 127 | 95 | 80 | 2 | - |
| K0443.2076 | B | 27 | M10 | 20 | 21 | 103 | 76 | 44 | 37 | 2 | 0 - 80 °C / 50 - 175 °F |
| K0443.2127 | B | 27 | M12 | 19 | 18 | 151 | 127 | 95 | 80 | 2 | 0 - 100 °C / 50 - 200 °F |



Material:

Housing steel.
Viewing glass thermoplastic polyamide.
O-ring and flat seal rubber (NBR).
Reflector aluminium.
Screw and hex nut steel.

Version:

Housing painted black.
Transparent viewing glass, high mechanical stability, non-ageing, temperature resistant with oil up to 100 °C, with water up to 70 °C.
Reflector painted white, markings and scale black.
Screw and hex nut, galvanized.

Sample order:

K0444.107610

Note:

The oil level gauges can either be fastened as shown in the illustration or directly in the threaded hole.
Centre distance for the fastening holes = $L1 \pm 0.5$.
The oil level gauges are suitable for tanks operating without pressure.
Maximum operating temperature: 100 °C.

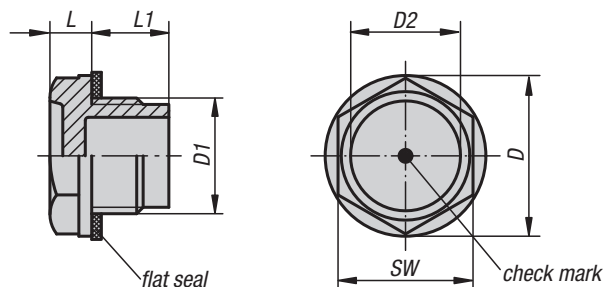
KIPP Oil level gauges

| Order No. | Form | B | D1 | H | H1 | L | L1 | L2 | L3 | Number of fastening screws | Thermometer scale |
|--------------|------|----|-----|------|----|-----|-----|-----|-----|----------------------------|--------------------------|
| K0444.107610 | A | 31 | M10 | 24,5 | 20 | 107 | 76 | 39 | 37 | 2 | - |
| K0444.107612 | A | 31 | M12 | 24,5 | 20 | 107 | 76 | 39 | 37 | 2 | - |
| K0444.112710 | A | 31 | M10 | 24,5 | 20 | 156 | 127 | 90 | 80 | 2 | - |
| K0444.112712 | A | 31 | M12 | 24,5 | 20 | 156 | 127 | 90 | 80 | 2 | - |
| K0444.125412 | A | 34 | M12 | 33 | 17 | 286 | 254 | 200 | 178 | 2 | - |
| K0444.207610 | B | 31 | M10 | 24,5 | 20 | 107 | 76 | 39 | 37 | 2 | 0 - 80 °C / 50 - 175 °F |
| K0444.207612 | B | 31 | M12 | 24,5 | 20 | 107 | 76 | 39 | 37 | 2 | 0 - 80 °C / 50 - 175 °F |
| K0444.212710 | B | 31 | M10 | 24,5 | 20 | 156 | 127 | 90 | 80 | 2 | 0 - 100 °C / 50 - 200 °F |
| K0444.212712 | B | 31 | M12 | 24,5 | 20 | 156 | 127 | 90 | 80 | 2 | 0 - 100 °C / 50 - 200 °F |
| K0444.225412 | B | 34 | M12 | 33 | 17 | 286 | 254 | 200 | 178 | 2 | 0 - 100 °C / 50 - 200 °F |

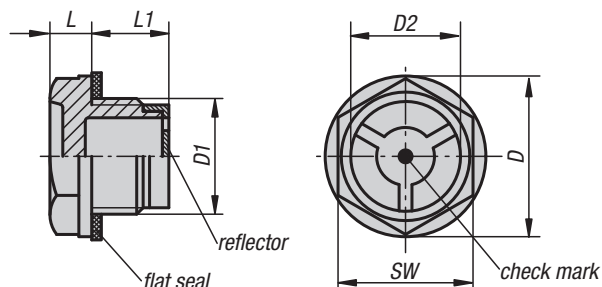
Oil level sight glasses



Form A
without reflector



Form B
with reflector



Material:

Housing in thermoplastic polyamide.
Plastic reflector.

Version:

Housing, transparent, high mechanical stability, non-ageing, temperature resistant with oil up to 100 °C, with water up to 70 °C; resistant to solvents but not to alcohol.

Flat seal, asbestos-free. White reflector.

Sample order:

K0445.143100

On request:

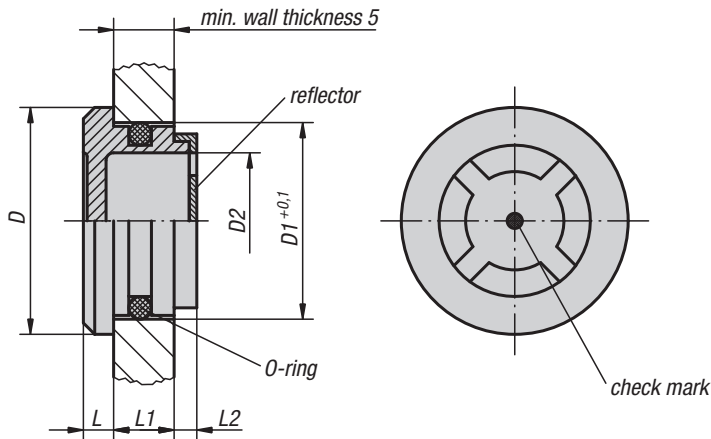
Rubber gasket (NBR).

KIPP Oil level sight glasses

| Order No. | Form | D | D1 | D2 | L | L1 | SW | Tightening torque max. Nm |
|---------------|------|----|---------|----|-----|------|----|---------------------------|
| K0445.120014 | A | 20 | G 1/4 | 15 | 7 | 8 | 17 | 6 |
| K0445.122038 | A | 22 | G 3/8 | 14 | 6,5 | 10,5 | 18 | 8 |
| K0445.128012 | A | 28 | G 1/2 | 16 | 8 | 11 | 24 | 12 |
| K0445.135034 | A | 35 | G 3/4 | 21 | 8 | 12 | 30 | 16 |
| K0445.143100 | A | 43 | G 1 | 32 | 11 | 12 | 36 | - |
| K0445.151114 | A | 51 | G 1 1/4 | 33 | 10 | 16 | 42 | - |
| K0445.158112 | A | 58 | G 1 1/2 | 40 | 12 | 16 | 50 | - |
| K0445.174200 | A | 74 | G 2 | 48 | 12 | 22 | 64 | - |
| K0445.1201415 | A | 20 | M14x1,5 | 15 | 7 | 8 | 17 | 7 |
| K0445.1221615 | A | 22 | M16x1,5 | 14 | 6,5 | 10 | 18 | 8 |
| K0445.1251815 | A | 25 | M18x1,5 | 16 | 7 | 10,5 | 21 | 10 |
| K0445.1282015 | A | 28 | M20x1,5 | 18 | 7,5 | 11 | 24 | 16 |
| K0445.1282215 | A | 28 | M22x1,5 | 16 | 7,5 | 12,5 | 24 | 12 |
| K0445.1362615 | A | 36 | M26x1,5 | 21 | 8,5 | 13,5 | 30 | 21 |
| K0445.1362715 | A | 36 | M27x1,5 | 21 | 8,5 | 13,5 | 30 | 21 |
| K0445.1514015 | A | 51 | M40x1,5 | 32 | 10 | 17 | 42 | - |
| K0445.222038 | B | 22 | G 3/8 | 14 | 6,5 | 10,5 | 18 | 8 |
| K0445.228012 | B | 28 | G 1/2 | 16 | 8 | 11 | 24 | 12 |
| K0445.235034 | B | 35 | G 3/4 | 21 | 8 | 12 | 30 | 16 |
| K0445.243100 | B | 43 | G 1 | 32 | 11 | 12 | 36 | - |
| K0445.251114 | B | 51 | G 1 1/4 | 33 | 10 | 16 | 42 | - |
| K0445.258112 | B | 58 | G 1 1/2 | 40 | 12 | 16 | 50 | - |
| K0445.274200 | B | 74 | G 2 | 48 | 12 | 22 | 64 | - |
| K0445.2221615 | B | 22 | M16x1,5 | 14 | 6,5 | 10 | 18 | 8 |
| K0445.2251815 | B | 25 | M18x1,5 | 16 | 7 | 10,5 | 21 | 10 |
| K0445.2282015 | B | 28 | M20x1,5 | 18 | 7,5 | 11 | 24 | 16 |
| K0445.2282215 | B | 28 | M22x1,5 | 16 | 7,5 | 12,5 | 24 | 12 |
| K0445.2362615 | B | 36 | M26x1,5 | 21 | 8,5 | 13,5 | 30 | 21 |
| K0445.2362715 | B | 36 | M27x1,5 | 21 | 8,5 | 13,5 | 30 | 21 |
| K0445.2514015 | B | 51 | M40x1,5 | 32 | 10 | 17 | 42 | - |

Oil level sight glasses

press-in



Material:
Housing in thermoplastic polyamide.
O-ring in rubber (NBR).
Plastic reflector.

Version:
Housing, transparent, high mechanical stability, non-ageing, temperature resistant with oil up to 100 °C, with water up to 70 °C; resistant to solvents but not to alcohol.
White reflector.

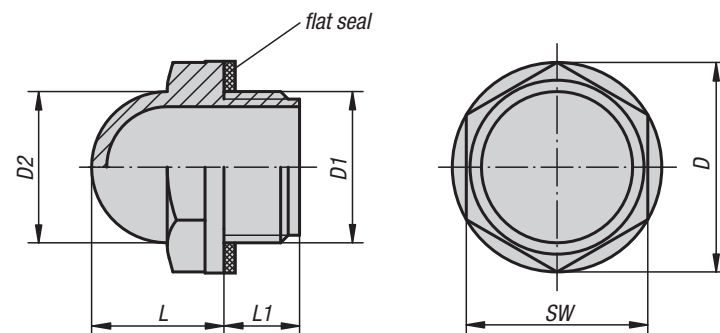
Sample order:
K0446.3026

KIPP Oil level sight glasses, press-in

| Order No. | D | drill-Ø D1 | D2 | L | L1 | L2 |
|------------|----|---------------|----|---|----|-----|
| K0446.2420 | 24 | 20 | 14 | 4 | 7 | 3 |
| K0446.3026 | 30 | 26 | 20 | 4 | 8 | 3,5 |
| K0446.3632 | 36 | 32 | 24 | 4 | 9 | 4 |
| K0446.4238 | 42 | 38 | 30 | 4 | 10 | 4 |
| K0446.4440 | 44 | 40 | 32 | 4 | 10 | 4 |

Oil level sight glasses

domed



Material:
Housing in thermoplastic polyamide.

Version:
Housing, transparent, high mechanical stability, non-ageing, temperature resistant with oil up to 100 °C, with water up to 70 °C; resistant to solvents but not to alcohol.
Flat seal, asbestos-free.

Sample order:
K0447.28012

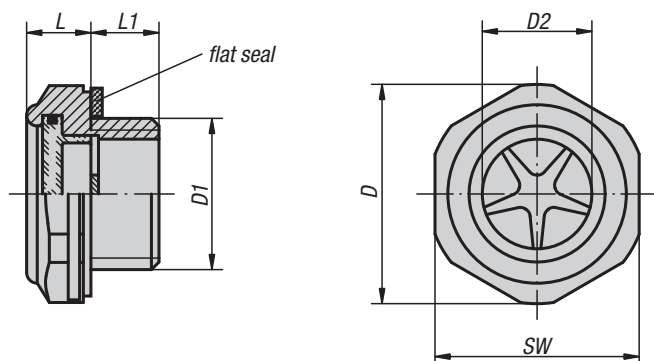
On request:
Rubber gasket (NBR).

KIPP Oil level sight glasses, domed

| Order No. | D | D1 | D2 | L | L1 | SW | Tightening torque max. Nm |
|-------------|----|-------|----|----|------|----|---------------------------------|
| K0447.22038 | 22 | G 3/8 | 15 | 14 | 10 | 19 | 8 |
| K0447.28012 | 28 | G 1/2 | 20 | 17 | 10 | 24 | 12 |
| K0447.35034 | 35 | G 3/4 | 25 | 20 | 10 | 30 | 16 |
| K0447.42100 | 42 | G 1 | 31 | 24 | 10,5 | 36 | 20 |

Oil level sight glasses

aluminium

**Material:**

Housing in aluminium.
Reflector in aluminium or white plastic.
Polyamide viewing lens.

Version:

Transparent viewing lens, temperature-resistant with oil up to 100 °C, with water up to 70 °C.
Flat seal, asbestos-free.

Sample order:

K0448.29012

Note:

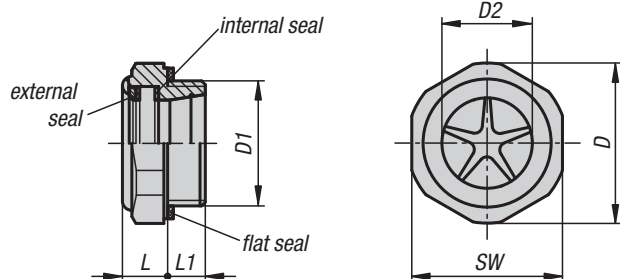
With versions G3/8 and M18x1,5 the reflector is made in white plastic.

KIPP Oil level sight glasses, aluminium

| Order No. | D | D1 | D2 | L | L1 | SW | Tightening torque max. Nm | Pressure load max. bar |
|--------------|------|---------|------|------|----|----|---------------------------|------------------------|
| K0448.20014 | 20 | G 1/4 | 11 | 8 | 8 | 17 | 9 | 10 |
| K0448.24038 | 24,1 | G 3/8 | 12,7 | 9,5 | 9 | 22 | 12 | 10 |
| K0448.29012 | 29,7 | G 1/2 | 15 | 10 | 9 | 27 | 18 | 10 |
| K0448.36034 | 35,2 | G 3/4 | 21,9 | 10 | 11 | 32 | 24 | 10 |
| K0448.42100 | 44,1 | G 1 | 25,1 | 11 | 11 | 40 | - | 10 |
| K0448.52114 | 55 | G1 1/4 | 34 | 13,5 | 12 | 50 | - | 10 |
| K0448.241815 | 24,5 | M18x1,5 | 13 | 10 | 9 | 22 | 12 | 10 |
| K0448.292215 | 29,5 | M22x1,5 | 16 | 10 | 9 | 27 | 18 | 10 |

Oil level sight glasses

aluminium, glass window



Material:

Housing, reflector in aluminium.
Natural, clear glass viewing lens.
Internal seal, Viton®.

Version:

Viewing lens, temperature-resistant to 150 °C.
Flat seal, asbestos-free.

Sample order:

K0246.29012

Note:

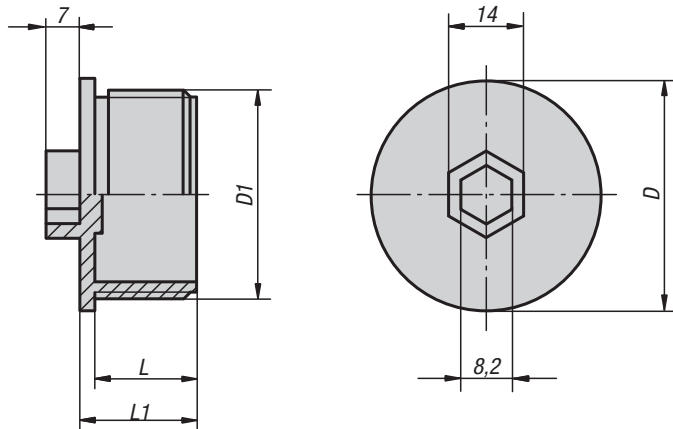
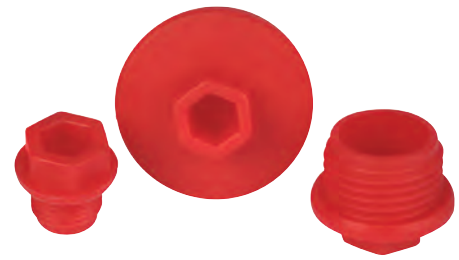
Resists high pressure and heat. Natural glass as the viewing lens ensures optimal light transmission and high surface hardness.

KIPP Oil level sight glasses, aluminium, glass window

| Order No. | D | D1 | D2 | L | L1 | SW | Tightening torque max. Nm | Pressure load max. bar |
|--------------|------|---------|----|----|----|----|---------------------------|------------------------|
| K0246.29012 | 29,5 | G 1/2 | 12 | 10 | 9 | 27 | 18 | 20 |
| K0246.34034 | 34,5 | G 3/4 | 16 | 12 | 10 | 32 | 24 | 20 |
| K0246.42100 | 42,5 | G 1 | 23 | 12 | 10 | 40 | - | 20 |
| K0246.292015 | 29,5 | M20x1,5 | 12 | 10 | 9 | 27 | 18 | 20 |
| K0246.423315 | 42,5 | M33x1,5 | 23 | 12 | 10 | 40 | - | 20 |



Plugs to screw-in



Material:

Elastomer, soft polyurethane

Version:

Red

Sample order:

K0449.038

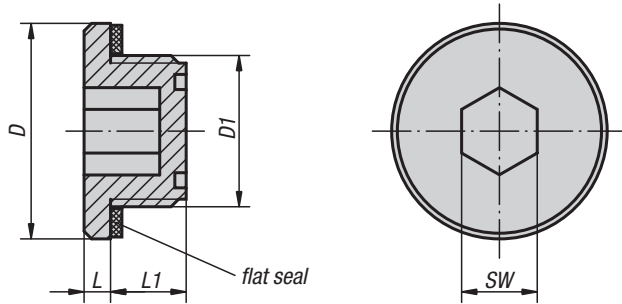
Note:

The double-lip seal guarantees a seal for pressures of 2-3 bar. It also keeps paint out during painting.

KIPP Plugs to screw-in

| Order No. | D | D1 | L | L1 |
|-----------|------|-------|------|------|
| K0449.018 | 16,2 | G 1/8 | 8 | 10 |
| K0449.014 | 18,1 | G 1/4 | 9,9 | 12,5 |
| K0449.038 | 21 | G 3/8 | 9 | 11 |
| K0449.012 | 25,2 | G 1/2 | 11 | 14 |
| K0449.034 | 31,3 | G 3/4 | 11,5 | 14 |
| K0449.100 | 36 | G 1 | 12 | 15,5 |

Plugs to screw-in



Material:

Thermoplastic polyamide 66

Version:

Black. Flat seal asbestos-free

Sample order:

K0450.22038

Note:

Temperature resistant:
oil up to 100 °C
water up to 70 °C.

On request:

O-ring or materials with higher stability.

KIPP Plugs to screw-in

| Order No. | D | D1 | L | L1 | SW | Tightening torque max. Nm |
|--------------|------|---------|-----|------|----|---------------------------|
| K0450.18014 | 18,2 | G 1/4 | 2,5 | 8 | 6 | 3 |
| K0450.22038 | 22,5 | G 3/8 | 3,5 | 10,5 | 8 | 6 |
| K0450.28012 | 28,5 | G 1/2 | 3,5 | 10,5 | 10 | 8 |
| K0450.35034 | 35 | G 3/4 | 4 | 10,5 | 12 | 10 |
| K0450.201415 | 20 | M14x1,5 | 2,5 | 8 | 6 | 3 |
| K0450.221615 | 22,5 | M16x1,5 | 3,5 | 11 | 8 | 6 |
| K0450.261815 | 26 | M18x1,5 | 3 | 10 | 10 | 7 |
| K0450.282015 | 28,5 | M20x1,5 | 3 | 11 | 10 | 7 |
| K0450.282215 | 28,5 | M22x1,5 | 3,5 | 10,5 | 10 | 7 |
| K0450.352615 | 35 | M26x1,5 | 3 | 12 | 12 | 10 |

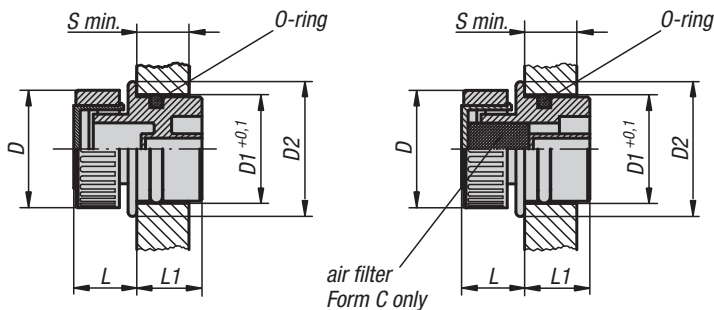
K0451

Plugs to press-in

Form A
without vent

Form B
with vent

Form C
with vent and air filter



Material:

Housing and cap thermoplastic polyamide 66.
Air filter polyurethane (PU foam).
O-ring rubber (NBR).

Version:

Housing black.
Cap red.
Filter mesh 50 µm.

Sample order:

K0451.33030

Note:

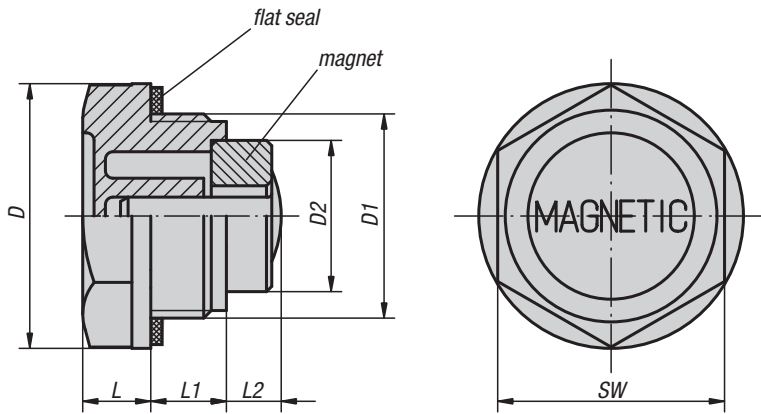
Temperature resistant:
oil up to 100 °C
water up to 70 °C.

KIPP Plugs to press-in

| Order No. Form A | Order No. Form B | Order No. Form C | D | drill-Ø D1 | D2 | L | L1 | S min. |
|------------------|------------------|------------------|----|------------|----|----|------|--------|
| K0451.13018 | K0451.23018 | K0451.33018 | 30 | 18 | 23 | 14 | 14 | 8 |
| K0451.13020 | K0451.23020 | K0451.33020 | 30 | 20 | 24 | 14 | 15,5 | 8 |
| K0451.13026 | K0451.23026 | K0451.33026 | 30 | 26 | 30 | 14 | 16,5 | 9,5 |
| K0451.13030 | K0451.23030 | K0451.33030 | 30 | 30 | 34 | 14 | 17 | 9,5 |

Plugs magnetic

plastic



Material:

Thermoplastic polyamide 66.
Ferrite permanent magnet.

Version:

Black. Flat seal asbestos-free

Sample order:

K0452.22038

Note:

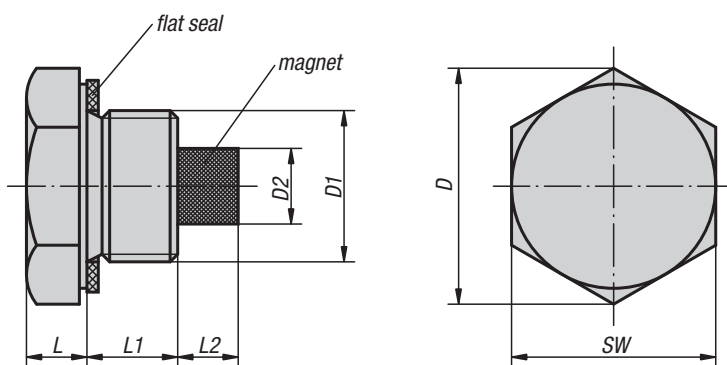
Temperature resistant:
oil up to 100 °C
water up to 70 °C.

KIPP Plugs magnetic, plastic

| Order No. | D | D1 | D2 | L | L1 | L2 | SW |
|--------------|----|---------|------|------|----|-----|----|
| K0452.20014 | 20 | G 1/4 | 8 | 7 | 9 | 5 | 17 |
| K0452.22038 | 22 | G 3/8 | 13 | 7,5 | 10 | 10 | 18 |
| K0452.27012 | 27 | G 1/2 | 13 | 8 | 11 | 9 | 24 |
| K0452.34034 | 34 | G 3/4 | 19,6 | 9 | 11 | 6,5 | 30 |
| K0452.42100 | 42 | G 1 | 19,6 | 10,5 | 12 | 14 | 35 |
| K0452.201415 | 20 | M14x1,5 | 8 | 7 | 9 | 5 | 17 |

Plugs magnetic

aluminium



Material:

Aluminium.
Ferrite permanent magnet.

Version:

Bright. Flat seal asbestos-free.

Sample order:

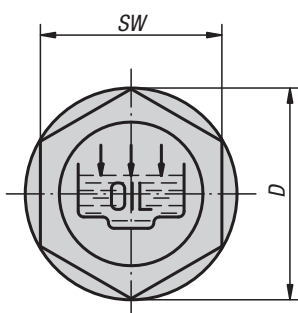
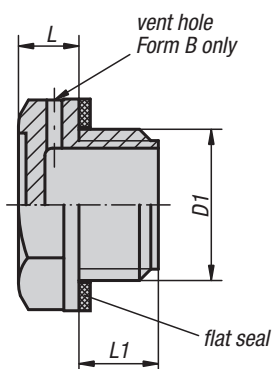
K0453.24038

KIPP Plugs magnetic, aluminium

| Order No. | D | D1 | D2 | L | L1 | L2 | SW |
|-------------|------|-------|----|---|----|----|----|
| K0453.21014 | 21 | G 1/4 | 5 | 7 | 10 | 6 | 19 |
| K0453.24038 | 24,5 | G 3/8 | 8 | 7 | 10 | 7 | 22 |
| K0453.30012 | 30 | G 1/2 | 10 | 8 | 10 | 7 | 27 |
| K0453.36034 | 36,5 | G 3/4 | 13 | 8 | 10 | 7 | 34 |
| K0453.42100 | 42,5 | G 1 | 13 | 8 | 14 | 7 | 40 |

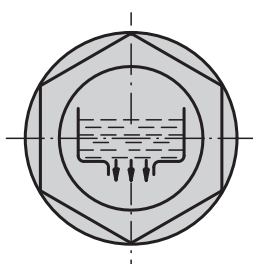
Plugs fill and drain

hexagon cap



Form A
with fill symbol

Form B
with fill symbol and
vent hole



Form C
with drain symbol

Material:

Thermoplastic polyamide 66

Version:

Black. Flat seal asbestos-free

Sample order:

K0454.142100

Note:

Temperature resistant:
oil up to 100 °C
water up to 70 °C.

KIPP Plugs fill and drain, hexagon cap

| Order No. Form A | Order No. Form B | Order No. Form C | D | D1 | L | L1 | SW | Tightening torque max. Nm |
|---------------------|---------------------|---------------------|------|---------|------|------|----|---------------------------------|
| K0454.119014 | K0454.219014 | K0454.319014 | 19,5 | G 1/4 | 7 | 9 | 17 | 5 |
| K0454.122038 | K0454.222038 | K0454.322038 | 22 | G 3/8 | 7,5 | 10 | 18 | 8 |
| K0454.128012 | K0454.228012 | K0454.328012 | 28 | G 1/2 | 7,5 | 11 | 24 | 9 |
| K0454.134034 | K0454.234034 | K0454.334034 | 34 | G 3/4 | 9 | 11 | 30 | 11 |
| K0454.142100 | K0454.242100 | K0454.342100 | 42 | G 1 | 10,5 | 12 | 35 | - |
| K0454.151114 | K0454.251114 | K0454.351114 | 51 | G 1 1/4 | 12 | 13,5 | 42 | - |
| K0454.158112 | K0454.258112 | K0454.358112 | 58 | G 1 1/2 | 10 | 14,5 | 50 | - |
| K0454.174200 | K0454.274200 | K0454.374200 | 74 | G 2 | 13,5 | 16 | 64 | - |
| K0454.1191415 | K0454.2191415 | K0454.3191415 | 19,5 | M14x1,5 | 7 | 9 | 17 | 5 |
| K0454.1211615 | K0454.2211615 | K0454.3211615 | 21 | M16x1,5 | 7,5 | 10 | 18 | 6 |
| K0454.1261815 | K0454.2261815 | K0454.3261815 | 26 | M18x1,5 | 7,5 | 10 | 21 | 7 |
| K0454.1282015 | K0454.2282015 | K0454.3282015 | 28 | M20x1,5 | 8 | 10 | 24 | 8 |
| K0454.1282215 | K0454.2282215 | K0454.3282215 | 28 | M22x1,5 | 8 | 11 | 24 | 10 |
| K0454.1524015 | K0454.2524015 | K0454.3524015 | 52 | M40x1,5 | 10 | 13 | 42 | - |



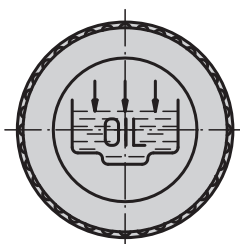
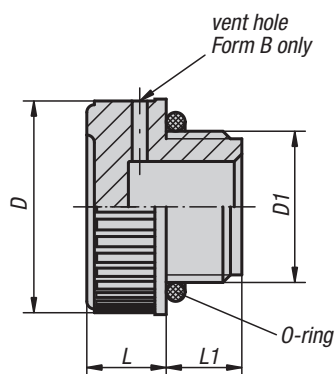
Plugs fill

knurled cap



Form A
with fill symbol

Form B
with fill symbol and
vent hole



Material:
Thermoplastic polyamide 66;
O-ring in rubber (NBR)

Version:
black.

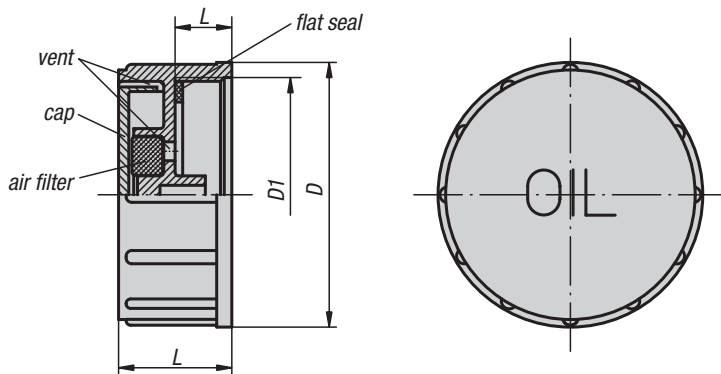
Sample order:
K0455.128012

Note:
Temperature resistant:
oil up to 100 °C
water up to 70 °C.

KIPP Plugs fill, knurled cap

| Order No. | Form | D | D1 | L | L1 |
|---------------|------|------|---------|------|------|
| K0455.120014 | A | 20 | G 1/4 | 9 | 9 |
| K0455.120038 | A | 20,5 | G 3/8 | 9 | 10 |
| K0455.128012 | A | 28 | G 1/2 | 10,5 | 10,5 |
| K0455.131034 | A | 31 | G 3/4 | 12 | 11 |
| K0455.139100 | A | 39 | G 1 | 12 | 12 |
| K0455.149114 | A | 49 | G 1 1/4 | 13 | 13,5 |
| K0455.155112 | A | 55 | G 1 1/2 | 14,7 | 14,5 |
| K0455.168200 | A | 68,5 | G 2 | 15 | 16 |
| K0455.1201415 | A | 20 | M14x1,5 | 9 | 9 |
| K0455.1201615 | A | 20 | M16x1,5 | 9 | 10 |
| K0455.1281815 | A | 28 | M18x1,5 | 10,5 | 10 |
| K0455.1282015 | A | 28 | M20x1,5 | 10,5 | 10 |
| K0455.1282215 | A | 28 | M22x1,5 | 10,5 | 10 |
| K0455.220014 | B | 20 | G 1/4 | 9 | 9 |
| K0455.220038 | B | 20,5 | G 3/8 | 9 | 10 |
| K0455.228012 | B | 28 | G 1/2 | 10,5 | 10,5 |
| K0455.231034 | B | 31 | G 3/4 | 12 | 11 |
| K0455.239100 | B | 39 | G 1 | 12 | 12 |
| K0455.249114 | B | 49 | G 1 1/4 | 13 | 13,5 |
| K0455.255112 | B | 55 | G 1 1/2 | 14,7 | 14,5 |
| K0455.268200 | B | 68,5 | G 2 | 15 | 16 |
| K0455.2201415 | B | 20 | M14x1,5 | 9 | 9 |
| K0455.2201615 | B | 20 | M16x1,5 | 9 | 10 |
| K0455.2281815 | B | 28 | M18x1,5 | 10,5 | 10 |
| K0455.2282015 | B | 28 | M20x1,5 | 10,5 | 10 |
| K0455.2282215 | B | 28 | M22x1,5 | 10,5 | 10 |

Caps for filler necks



Material:

Housing, cap in thermoplastic polyamide 66.
Air filter in polyurethane (PU foam).
Rubber flat seal (NBR).

Version:

Black housing.
Red cap.
Filter mesh 50 µm.

Sample order:

K0456.67200

Note:

Temperature resistant:
oil up to 100 °C
water up to 70 °C.

On request:

Cap in yellow for diesel oil.

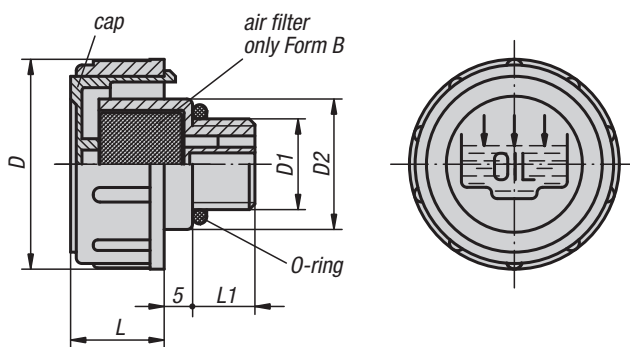
KIPP Caps for filler necks

| Order No. | D | D1 | L | L1 |
|--------------|------|-------|----|----|
| K0456.67200 | 67,5 | G 2 | 30 | 15 |
| K0456.676020 | 67,5 | M60x2 | 30 | 15 |

Vent screws

Form A
without air filter

Form B
with air filter



Material:

Housing, cap in thermoplastic polyamide 66.
Air filter (Form B only) in polyurethane (PU foam).
O-ring in rubber (NBR).

Version:

Black housing.
Red cap.
Filter mesh 60 µm.

Sample order:

K0457.147034

Note:

Temperature resistant:
oil up to 100 °C
water up to 70 °C.
The removable cap allows easy cleaning of the air filter.

KIPP Vent screws

| Order No. Form A | Order No. Form B | D | D1 | D2 | L | L1 |
|---------------------|---------------------|----|---------|----|------|------|
| K0457.136038 | K0457.236038 | 36 | G 3/8 | 23 | 17 | 11 |
| K0457.141012 | K0457.241012 | 41 | G 1/2 | 28 | 18 | 12 |
| K0457.147034 | K0457.247034 | 47 | G 3/4 | 33 | 17 | 12 |
| K0457.152100 | K0457.252100 | 52 | G 1 | 38 | 20 | 12 |
| K0457.163114 | K0457.263114 | 63 | G 1 1/4 | 49 | 23 | 13 |
| K0457.163112 | K0457.263112 | 63 | G 1 1/2 | 55 | 23 | 13,5 |
| K0457.1361615 | K0457.2361615 | 36 | M16x1,5 | 23 | 17 | 11 |
| K0457.1411815 | K0457.2411815 | 41 | M18x1,5 | 28 | 17,5 | 12 |
| K0457.1412015 | K0457.2412015 | 41 | M20x1,5 | 28 | 17,5 | 12 |
| K0457.1412215 | K0457.2412215 | 41 | M22x1,5 | 28 | 17,5 | 12 |

Vent screws

with splash guard



Material:

Housing, cap in thermoplastic polyamide 66.
Air filter in polyurethane (PU foam).
Rubber flat seal (NBR).

Version:

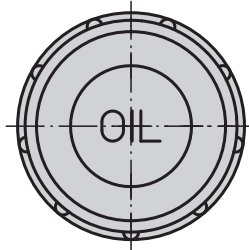
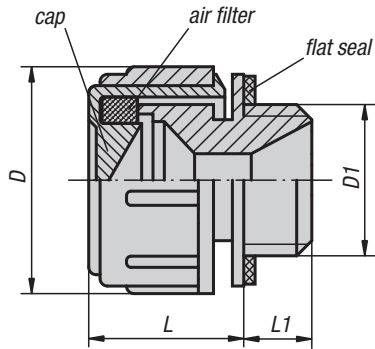
Black housing.
Red cap.
Filter mesh 50 µm.

Sample order:

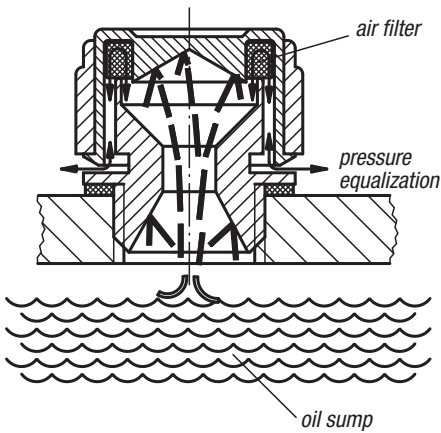
K0458.30038

Note:

Temperature resistant:
oil up to 100 °C
water up to 70 °C.



splash guard



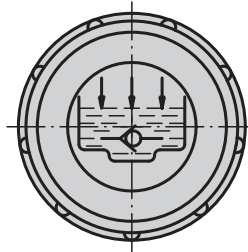
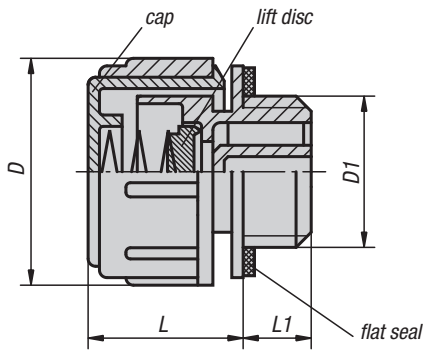
Gears partly immersed in an oil sump create an oil spray that may cause oil to leak from the vent cap. To avoid this the screw has been fitted with a splash guard. Only a small part of the oil spray can pass through the lower tapered bore. The oil that does reach the cap underside is redirected in such a way that it does not notably hinder the venting process.

KIPP Vent screws with splash guard

| Order No. | D | D1 | L | L1 |
|-------------|----|-------|----|----|
| K0458.30014 | 30 | G 1/4 | 21 | 10 |
| K0458.30038 | 30 | G 3/8 | 21 | 10 |
| K0458.30012 | 30 | G 1/2 | 21 | 10 |

Vent screws

with check valve



Material:

Housing and cap thermoplastic polyamide 66.
Spring stainless steel.
Lift disc and flat seal rubber (NBR).

Version:

Housing black.
Cap red.

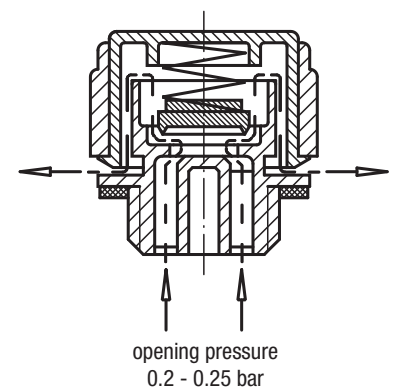
Sample order:

K0459.30014

Note:

Temperature resistant:
oil up to 100 °C
water up to 70 °C.
Opening pressure 0.20 – 0.25 bar.

Operating principle

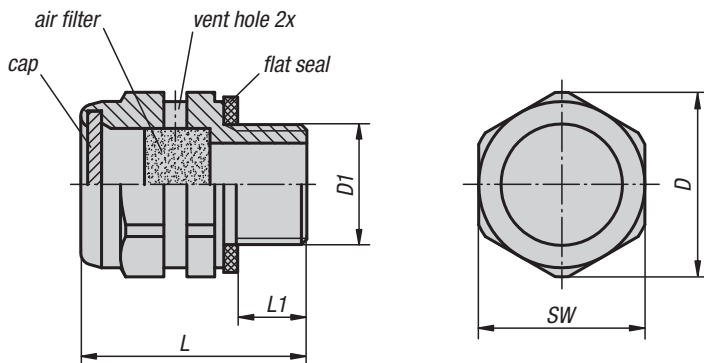


KIPP Vent screws with check valve

| Order No. | D | D1 | L | L1 |
|-------------|----|-------|----|----|
| K0459.30014 | 30 | G 1/4 | 21 | 10 |
| K0459.30038 | 30 | G 3/8 | 21 | 10 |
| K0459.30012 | 30 | G 1/2 | 21 | 10 |



Vent screws brass



Material:
Housing and cap brass.
Air filter galvanized steel wire mesh.

Version:
Air filter mesh 50 - 60 µm.
Flat seal asbestos-free.

Sample order:
K0460.20014

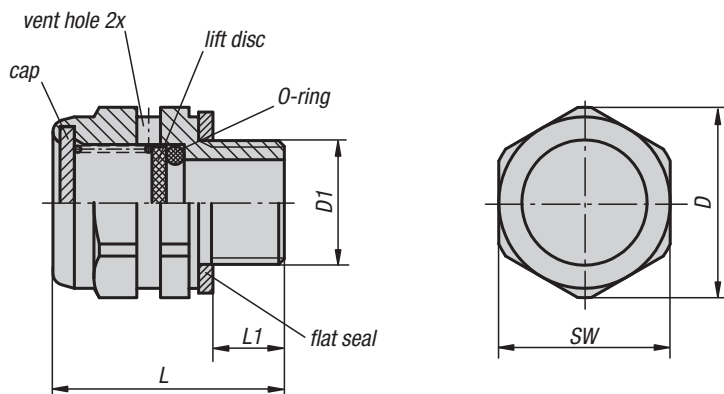
KIPP Vent screws brass

| Order No. | D | D1 | L | L1 | SW |
|-------------|------|-------|------|-----|----|
| K0460.20014 | 20 | G 1/4 | 24,5 | 7,5 | 18 |
| K0460.24038 | 24,5 | G 3/8 | 24,5 | 8,5 | 22 |
| K0460.30012 | 30 | G 1/2 | 24,5 | 8,5 | 27 |

K0461

Vent screws brass

with check valve



Material:
Housing and cap brass.
Spring stainless steel.
Lift disc aluminium.
O-ring rubber (NBR).

Version:
Flat seal asbestos-free.

Sample order:
K0461.20014

Note:
Opening pressure 0.3 bar (±0.1).

Functional principle:
See K0459 vent screws with check valve.

KIPP Vent screws brass with check valve

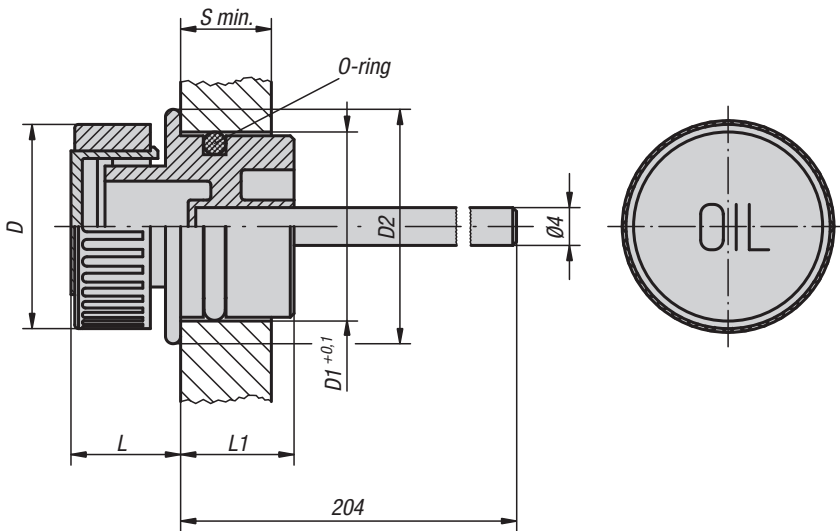
| Order No. | D | D1 | L | L1 | SW |
|-------------|------|-------|------|-----|----|
| K0461.20014 | 20 | G 1/4 | 24,3 | 7,5 | 18 |
| K0461.24038 | 24,5 | G 3/8 | 24,5 | 8,5 | 22 |
| K0461.30012 | 30 | G 1/2 | 24,5 | 8,5 | 27 |

Plugs to press-in

with dipstick

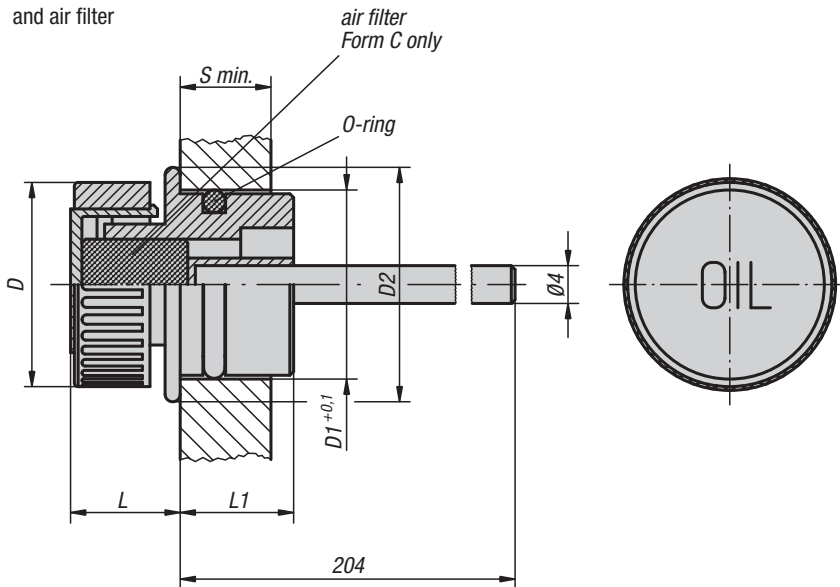


Form A
without vent



Form B
with vent

Form C
with vent
and air filter



Material:

Housing and cap thermoplastic polyamide 66.
Air filter polyurethane (PU foam).
Dipstick zinc.
O-ring rubber (NBR).

Version:

Housing black.
Cap red.
Filter mesh 50 µm.
Dipstick phosphated.

Sample order:

K0462.13018

Note:

Temperature resistant:
oil up to 100 °C
water up to 70 °C.

On request:

Min-Max increments.

KIPP Plugs to press-in with dipstick

| Order No. Form A | Order No. Form B | Order No. Form C | D | drill-Ø D1 | D2 | L | L1 | S min. |
|---------------------|---------------------|---------------------|----|---------------|----|----|----|-----------|
| K0462.13018 | K0462.23018 | K0462.33018 | 30 | 18 | 23 | 14 | 14 | 8 |

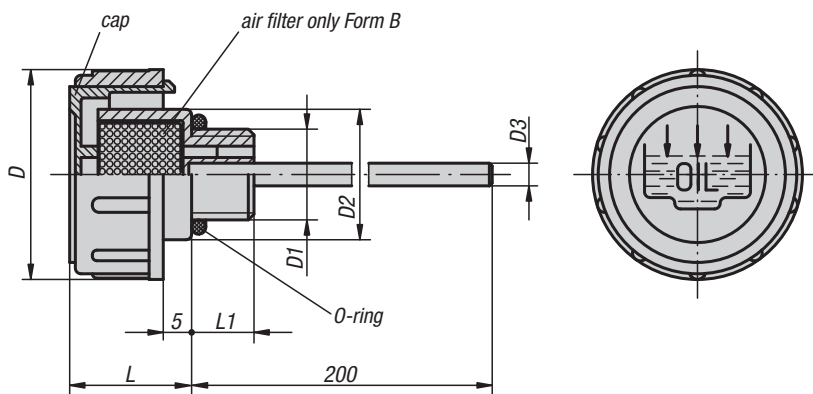
Vent screws

with dipstick



Form A
without air filter

Form B
with air filter



Material:

Housing and cap thermoplastic polyamide 66.

Air filter polyurethane (PU foam).

Dipstick zinc.

O-ring rubber (NBR).

Version:

Housing black.

Cap red.

Filter mesh 50 µm.

Dipstick phosphated.

Sample order:

K0465.141012

Note:

Temperature resistant:

oil up to 100 °C

water up to 70 °C.

The removable cap allows easy cleaning of the air filter.

On request:

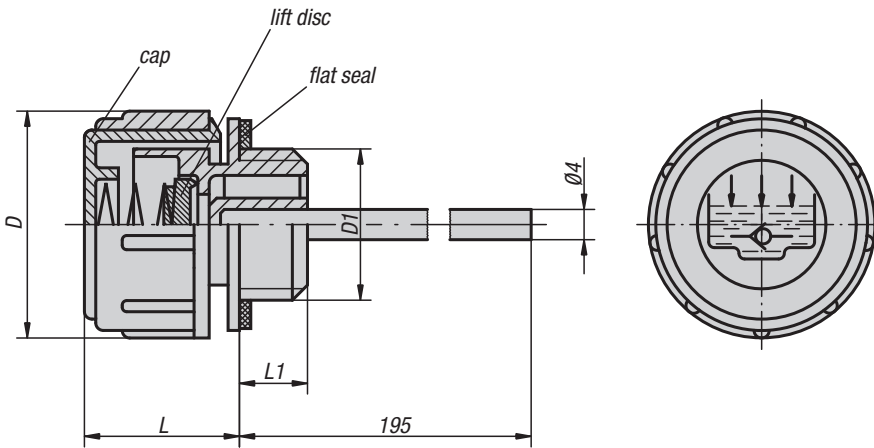
Min-Max increments.

KIPP Vent screws with dipstick

| Order No. | Form | D | D1 | D2 | D3 | L | L1 |
|---------------|------|----|---------|----|----|------|------|
| K0465.136038 | A | 36 | G 3/8 | 23 | 4 | 17 | 11 |
| K0465.141012 | A | 41 | G 1/2 | 28 | 4 | 18 | 12 |
| K0465.147034 | A | 47 | G 3/4 | 33 | 5 | 17 | 12 |
| K0465.152100 | A | 52 | G 1 | 38 | 5 | 20 | 12 |
| K0465.163114 | A | 63 | G 1 1/4 | 49 | 5 | 23 | 13 |
| K0465.163112 | A | 63 | G 1 1/2 | 55 | 5 | 23 | 13,5 |
| K0465.1361615 | A | 36 | M16x1,5 | 23 | 4 | 17 | 11 |
| K0465.1411815 | A | 41 | M18x1,5 | 28 | 4 | 17,5 | 12 |
| K0465.1412015 | A | 41 | M20x1,5 | 28 | 4 | 17,5 | 12 |
| K0465.1412215 | A | 41 | M22x1,5 | 28 | 4 | 17,5 | 12 |
| K0465.236038 | B | 36 | G 3/8 | 23 | 4 | 17 | 11 |
| K0465.241012 | B | 41 | G 1/2 | 28 | 4 | 18 | 12 |
| K0465.247034 | B | 47 | G 3/4 | 33 | 5 | 17 | 12 |
| K0465.252100 | B | 52 | G 1 | 38 | 5 | 20 | 12 |
| K0465.263114 | B | 63 | G 1 1/4 | 49 | 5 | 23 | 13 |
| K0465.263112 | B | 63 | G 1 1/2 | 55 | 5 | 23 | 13,5 |
| K0465.2361615 | B | 36 | M16x1,5 | 23 | 4 | 17 | 11 |
| K0465.2411815 | B | 41 | M18x1,5 | 28 | 4 | 17,5 | 12 |
| K0465.2412015 | B | 41 | M20x1,5 | 28 | 4 | 17,5 | 12 |
| K0465.2412215 | B | 41 | M22x1,5 | 28 | 4 | 17,5 | 12 |

Vent screws

with check valve and dipstick



Material:

Housing and cap thermoplastic polyamide.
Spring stainless steel.
Dipstick zinc.
Lift disc and seal rubber (NBR).

Version:

Housing black.
Cap red.
Dipstick phosphated.

Sample order:

K0467.30038

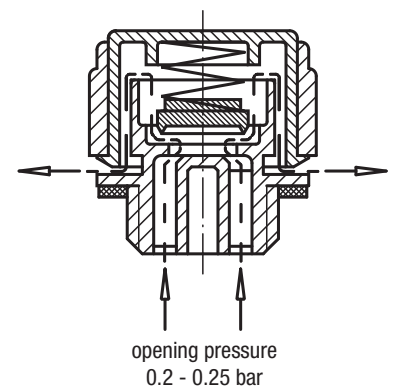
Note:

Temperature resistant:
oil up to 100 °C
water up to 70 °C.
Opening pressure 0.20 – 0.25 bar.

On request:

Min-Max increments.

Operating principle



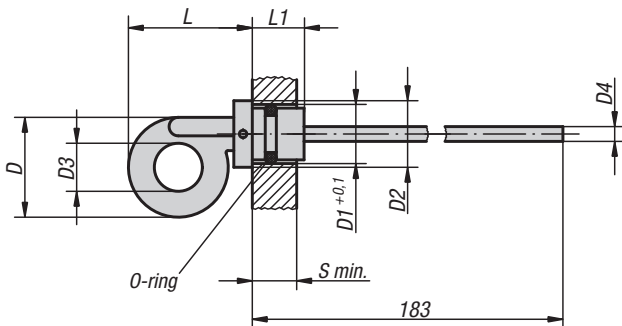
KIPP Vent screws with check valve and dipstick

| Order No. | D | D1 | L | L1 |
|-------------|----|-------|----|----|
| K0467.30038 | 30 | G 3/8 | 21 | 10 |
| K0467.30012 | 30 | G 1/2 | 21 | 10 |

Dipsticks

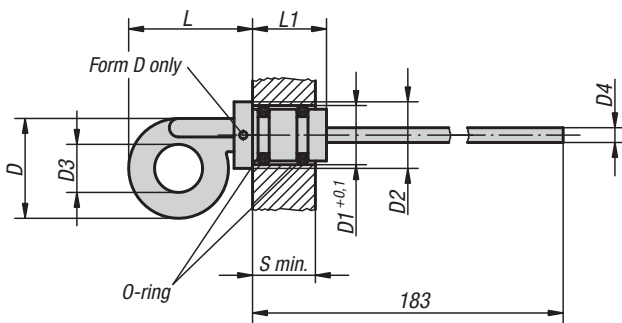


Form B
with vent hole



Form C
without vent hole

Form D
with vent hole



Material:

Thermoplastic polyamide handle.
Zinc dipstick.
O-ring in rubber (NBR).

Version:

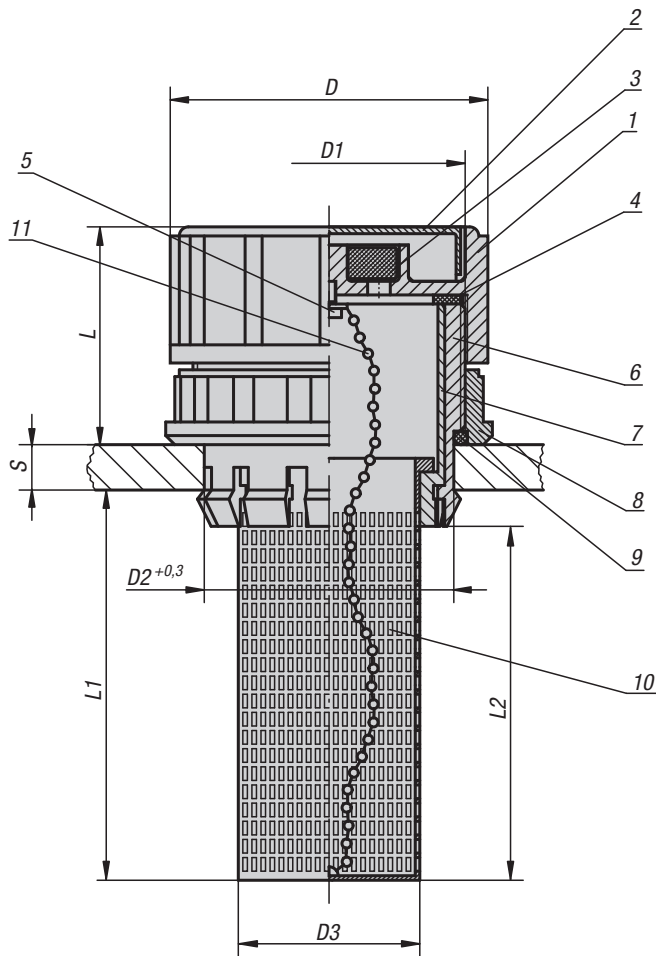
Black handle.
Dipstick, phosphated.

Sample order:

K0468.23218

KIPP Dipsticks

| Order No. | Form | D | drill-Ø D1 | D2 | D3 | D4 Ø | L | L1 | S min. |
|-------------|------|----|---------------|----|----|---------|------|----|-----------|
| K0468.22714 | B | 27 | 14 | 18 | 13 | 4 | 34 | 13 | 10 |
| K0468.23218 | B | 32 | 18 | 24 | 14 | 5 | 45 | 17 | 9 |
| K0468.23220 | B | 32 | 20 | 24 | 14 | 5 | 44,5 | 18 | 10 |
| K0468.32714 | C | 27 | 14 | 18 | 13 | 4 | 34 | 20 | 17 |
| K0468.33012 | C | 27 | 12 | 18 | 14 | 4 | 36 | 20 | 16 |
| K0468.33318 | C | 33 | 18 | 24 | 14 | 5 | 44 | 21 | 17,5 |
| K0468.33520 | C | 35 | 20 | 24 | 16 | 5 | 46 | 21 | 17,5 |
| K0468.42714 | D | 27 | 14 | 18 | 13 | 4 | 34 | 20 | 17 |
| K0468.43318 | D | 33 | 18 | 24 | 14 | 5 | 44 | 21 | 17,5 |



Material, version:

- 1. Filler housing black thermoplastic polyamide 66
- 2. Filler cap red thermoplastic polyamide 66
- 3. Air filter polyurethane (PU foam), filter mesh 50 µm
- 4. Flat seal rubber (NBR)
- 5. Fastening screw nickel-plated steel
- 6. Press-in collar black thermoplastic polyamide 66
- 7. Stop bush black thermoplastic polyamide 66
- 8. Fastening nut black thermoplastic polyamide 66
- 9. O-ring rubber (NBR)
- 10. Filler sieve black thermoplastic polypropylene
- 11. Chain nickel-plated brass

Sample order:

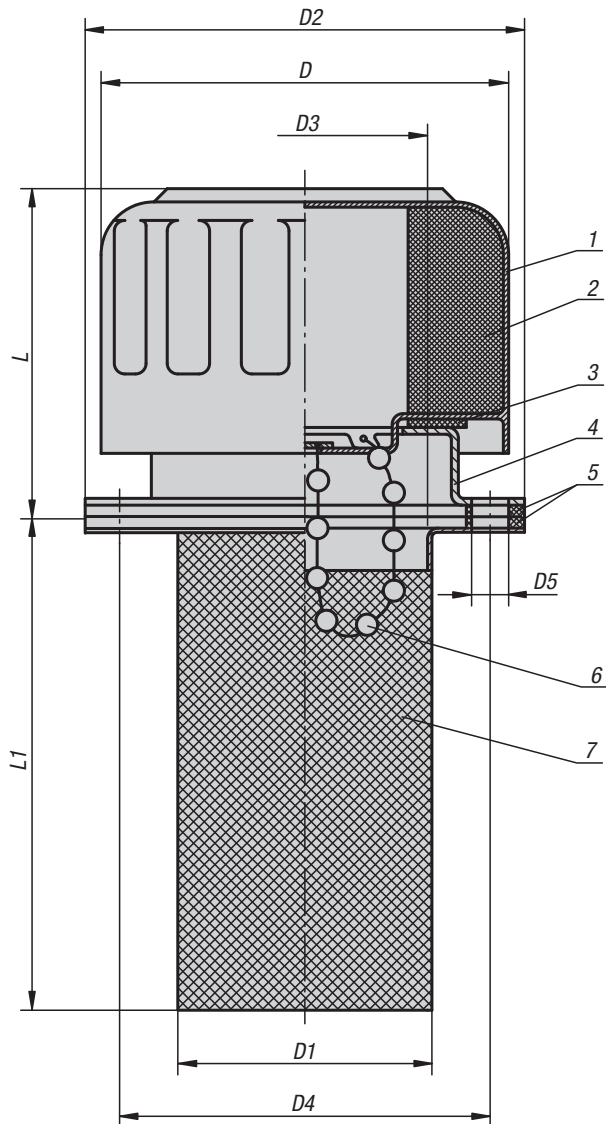
K0470.706020

Note:

Temperature resistant up to 90 °C.

KIPP Filler necks

| Order No. | D | D1 | D2 | D3 | L | L1 | L2 | S |
|--------------|----|-------|----|----|------|----|----|-------|
| K0470.706020 | 70 | M60x2 | 55 | 38 | 46,5 | 88 | 80 | 2 - 8 |



Material, version:

1. Filler housing chrome steel
2. Air filter polyurethane (PU foam), filter mesh 40 µm. Flow rate up to 720 l/min
3. Flat seal cork
4. Mounting flange with fastening screws, bayonet fitting
5. Flat seal cork
6. Chain nickel-plated brass
7. Filler sieve galvanized steel

Sample order:

K0471.45

Note:

The filler necks are supplied with seals and M5 fastening screws.

Not suitable for water tanks.

KIPP Filler necks

| Order No. | Version | D | D1 | D2 | D3 | D4 | D5 | L | L1 |
|-----------|---------------|------|------|----|----|------|--------|----|----|
| K0471.45 | without chain | 46,5 | 27,5 | 52 | 25 | 41,3 | 6 (3x) | 43 | 66 |
| K0471.77 | with chain | 80 | 49 | 83 | 44 | 71,5 | 6 (6x) | 57 | 80 |

